

# Quest 5

## BASIC VANDAL RESISTANT Shallow Drop Pyramid Luminaire Indoor/Outdoor Wet Location

We reserve the right to revise the design or components of any product without notice.

CATALOG #		TYPE
PROJECT/LOCATION		
APPROVED BY		

### SPECIFICATIONS

- DRIVER — Universal Voltage 120/277 Electronic Driver with 0-10V dimming is standard.
- EMERGENCY — Remote or Integral Emergency LED Battery.
- GASKETING — High temperature, non-aging black EPDM and/or neoprene rubber around entire lens perimeter and rear wire entrance hole to protect against dust, moisture, and outside contaminants.
- HOUSING — Heavy wall cast aluminum with wire access on four sides and back through threaded 1/2" conduit size entrance holes—finished in bronze oven baked polyester powder coat.
- LIGHT ENGINE — Energy Efficient Light Emitting Diode (LED).
- LENS — Injection molded 1/8" thick (nom.) clear prismatic polycarbonate completely enclosed fixture—Drop Pyramid is Standard.
- LENS FASTENERS — Stainless steel tamperproof screws (4) to secure lens in place.
- MOUNTING — 4-Point Mount: (4) 5/16" Diameter Holes For 1/4" Diameter Bolts. Optional Quick Mount Bracket.
- REFLECTOR — .032 textured aluminum for high efficiency and to reduce arc tube voltage rise for lamp life.
- COMPLIANCE — Built to comply with U.S. and Canadian Safety Standards. Suitable for Wet Locations. **Made in USA / Buy America Compliant / Buy American Act.**



### ORDERING INFO

Series	Wattage	CCT	Voltage	Finish	Options

#### ORDERING GUIDE:

#### SERIES

QE5 = Quest 5 Series

#### WATTAGE

LED40 = 40 Watt LED (4000 Initial Lumens)  
LED60 = 60 Watt LED (5800 Initial Lumens)<sup>2</sup>

#### COLOR TEMPERATURE (CCT)

3K = ±3000K range  
35K = ±3500K range  
4K = ±4000K range  
5K = ±5000K range

#### VOLTAGE

347 = 347 Volts  
UNV = Universal Volt (120-277v) Electronic Driver

#### STANDARD FINISH

BK = Black Finish  
BZ = Bronze Finish – Standard  
PNA = Painted Natural Aluminum  
WH = White Finish

#### PREMIUM UPCHARGE FINISH

CC = Custom Color (Visit [www.ralcolor.com](http://www.ralcolor.com))  
+NAT = Epoxy Coating for Natatorium  
+OFC = Epoxy Coating for Ocean Front Environments

#### MOUNTING OPTIONS

QM = Quick Mount Bracket  
SR = Semi-Recessed Adapter

#### PHOTOCELL OPTION

9328 = Photocell Button (120/277V)<sup>2</sup>

#### CONTROL OPTIONS (Choose from Manual or Sensor)

MANUAL CONTROL (Wall Switch or Control System)

Note: Cannot be used with Sensor Controls below

Note: 0-10V (100-30%) Dimming is Standard

D7A = 0-10VDC LED Dimming Driver (100-10%)  
D7B = 0-10VDC LED Dimming Driver (100-1%)

BLS = Bi-Level Switching - Using 2 Drivers (2UNV)<sup>2</sup>

OR

Sensor Control (Sensor Integral to Fixture)

Note: Cannot be used with Manual Controls above

Note: See Accessory Options for Required Remote Controller

OCC = Occupancy Sensing | Motion Sensor Integral<sup>20</sup>  
— Microwave / Single Feed / 120/277V Only  
— Standby Dim Level Presets: ON/OFF (0%/100%)

BLD = Bi-Level Dimming | Motion Sensor Integral<sup>20</sup>  
— Microwave / Single Feed / 120/277V Only  
— Standby Dim Level Presets:  
10% / 20% / 30% (Standard) / 50%

BLDA = Bi-Level Dimming | Motion Sensor Integral<sup>20</sup>  
— Ambient Light Sensing Feature  
— Microwave / Single Feed / 120/277V Only  
— Standby Dim Level Presets:  
10% / 20% / 30% (Standard) / 50%  
— Bi-Level Control Initiated at Ambient Light Level Preset

#### MISC OPTIONS

BB = Back Box (required where note<sup>2</sup> shown)  
FUS = Single Fusing  
DFUS = Double Fusing

#### EMERGENCY BATTERY OPTIONS<sup>20 50</sup>

Meets California Energy Commission Title 20:  
(CEC-400-2014-009-CMF) Efficiency Standards

EL4W = Integral LED 4 Watt<sup>2</sup>  
EL8W = Integral LED 8 Watt<sup>2</sup>  
EL10W = Integral LED 10 Watt<sup>2</sup>  
EL16W = Integral LED 16 Watt<sup>2</sup>

REL4W = Remote LED 4 Watt  
REL8W = Remote LED 8 Watt  
REL10W = Remote LED 10 Watt  
REL16W = Remote LED 16 Watt

#### Cold Weather Emergency Batteries:

Operating Temp: -20°C thru 50°C / NON-CEC Compliant

EL10W-CW = Integral LED 10 Watt (Cold Weather)<sup>2</sup>  
REL10W-CW = Remote LED 10 Watt (Cold Weather)

#### ACCESSORY OPTIONS (order as a separate line)

9002 = Tamperproof Screwdriver  
REMT0009 = Remote Controller for Sensor Options

#### NOTES:

- <sup>2</sup> Backbox (BB) Required.
- <sup>20</sup> Max mounting height of fixture is 18' (18 feet)
- <sup>50</sup> Max WHIP length of the REL is 8 feet.
- <sup>55</sup> Final selection of the Battery Pack under discretion of Factory

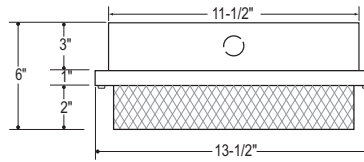
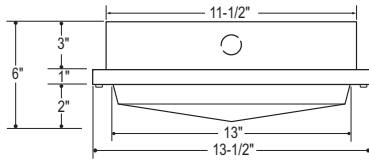
# Quest 5

## BASIC VANDAL RESISTANT Shallow Drop Pyramid Luminaire Indoor/Outdoor Wet Location

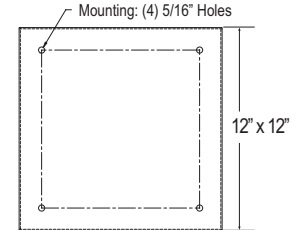
We reserve the right to revise the design or components of any product without notice.

CATALOG #		TYPE
PROJECT/LOCATION		
APPROVED BY		

### DIMENSIONS



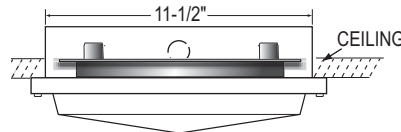
Drop Square - Optional



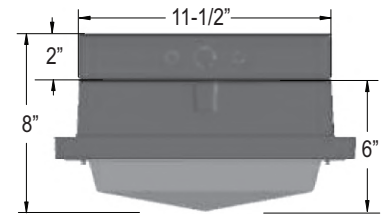
### OPTIONS



Quick Mount Bracket (QM)



Semi-Recessed Adapter (SR)



Shown with Back Box (BB)  
Required for Integral Battery Backup and LED60w

### PHOTOMETRIC DATA

Summary of Results   QE5-LED40-3K-UNV-DS					
Lumen Output	Efficacy	Input Power	CCT	Distribution	BUG Rating
4,279.9 Lumens	109.7 Lm/W	39.0W	3000K	Type VS	B2-U3-G1

LCS Summary	
Zone	Lumens
Forward Low (0-30)	529.2
Forward Medium (30-60)	1004.9
Forward High (60-80)	470.4
Forward Very High (80-90)	92.3
Back Low (0-30)	529.2
Back Medium (30-60)	1004.9
Back High (60-80)	470.4
Back Very High (80-90)	92.3
Up Low (90-100)	54.7
Up High (100-180)	31.6

