

EGR

LED Vandal Economy Canopy Luminaire

We reserve the right to revise the design or components of any product without notice.

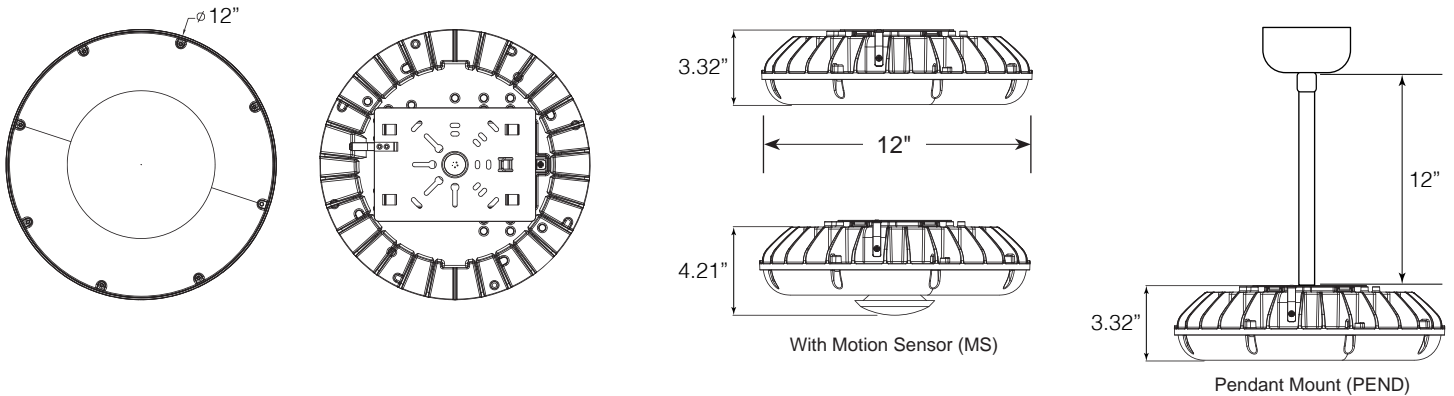
CATALOG #		TYPE
PROJECT/LOCATION		
APPROVED BY		

SPECIFICATIONS

- APPLICATIONS — Low Bay, Parking Structures, Docks, Canopy, Storage Areas, Shopping Area Walkways, Entryways, Low Level Security.
- DRIVER — Universal Voltage (120-277V) Electronic Driver. Optional 347V.
- HEAT SINK — Built-in Aluminum Die-Cast Heatsink.
- HOUSING — Sealed Die-Cast Waterproof Aluminum Housing. Finished in Oven Baked Polyester Powder Coat.
- DIFFUSER — Optically precise injection molded polycarbonate lens. Low Bay (LB) Distribution is Standard. Optional Parking Garage (PG) Distribution.
- LIGHT ENGINE — Energy Efficient Light Emitting Diode replaces 100W MH and 175W MH. Lumen output ranges from 3500-7600lm / Efficacy up to 127lm/W.
- OPERATING TEMP — -40°C to 40°C (-40°F to 104°F).
- MOUNTING — Surface Mount (SM) Bracket via J-BOX. Mounting Bracket also supports Pendant Mounting (PEND) with Swivel Canopy. 1/2" Side Threaded Knock Outs Holes.
- COMPLIANCE — Built to comply with U.S. and Canadian safety standards. Suitable for wet locations.
- WARRANTY — 5 Years, Defects and Workmanship.



DIMENSIONS



OPTIONS

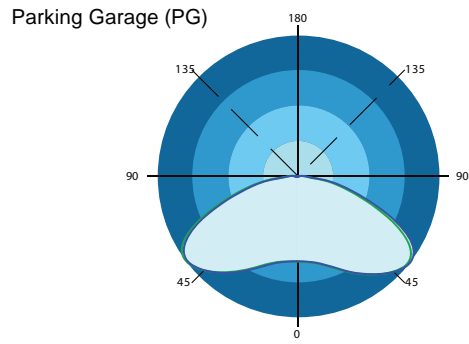
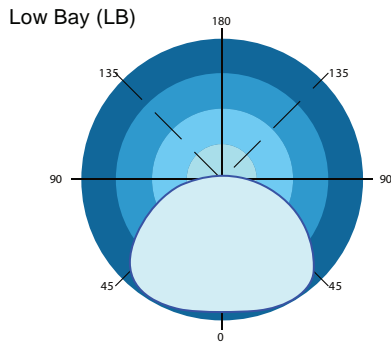


Remote Emergency Battery (REL) - 900lm / 90min
Note: 50 Watt / 60 Watt Compatible with REL Only

Bi-Level Motion Sensor (MS)



Integral Emergency Battery (EL) - 900lm / 90min
Note: EL Compatible with 30 Watt / 45 Watt Only



LED Wattage / Optics / Voltage			4000K (70CRI)		5000K (70CRI)	
SYSTEM WATTS	LIGHT DISTRIBUTION	VOLTAGE	LUMENS	LPW	LUMENS	LPW
30W	Parking Garage	120~277V	3500lm	117 lm/w	3600lm	120 lm/w
	Low Bay	120~277V	3800lm	127 lm/w	3800lm	127 lm/w
45W	Parking Garage	120~277V	4900lm	109 lm/w	5000lm	111 lm/w
	Low Bay	120~277V	5500lm	122 lm/w	5500lm	122 lm/w
50W	Parking Garage	347V	4900lm	98 lm/w	5000lm	100 lm/w
	Low Bay	347V	5500lm	110 lm/w	5500lm	110 lm/w
60W	Parking Garage	120~277V	7000lm	117 lm/w	7100lm	118 lm/w
	Low Bay	120~277V	7600lm	127 lm/w	7600lm	127 lm/w
60W	Parking Garage	347V	7000lm	117 lm/w	7100lm	118 lm/w
	Low Bay	347V	7600lm	127 lm/w	7600lm	127 lm/w

ORDERING GUIDE: Series Mounting Light Distribution LED Wattage CCT Voltage Finish Options

SERIES

EGR = LED Vandal Economy Canopy Luminaire

MOUNTING

SM = Surface Mount (via J-Box)
 PEND = Pendant Mount
 -1/2" IPS Conduit Stem (12" is Standard)
 -For Other Stem Lengths (Consult Factory)
Choose Pendant Canopy Style:
 SWC-R = Swivel Canopy for 4" Round J-BOX
 SWC-RR = Swivel Canopy for 4" Round J-BOX
 — Rapid Mount with Hinged Door
 SWC-S = Swivel Canopy for 4" Square J-BOX
 SWC-SR = Swivel Canopy for 4" Square J-BOX
 — Rapid Mount with Hinged Door
Note: See Page 3 for Images/Examples

LIGHT DISTRIBUTION

See Above Diagrams for Reference
 LB = Low Bay Light Distribution (STANDARD)
 PG = Parking Garage Light Distribution

LED WATTAGE

— See Above Chart for Wattage / Lumen Info
 — See 3rd Page for Photometric Data
 LEDxx = LED(xx=Wattage)

LED COLOR TEMPERATURE (CCT)

4K = ±4000K range
 5K = ±5000K range

VOLTAGE

347 = 347 Volts (50W/60W Only)
 UNV = Universal Volt (120-277v) Electronic Driver

FINISH

BK = Black
 BZ = Bronze
 WH = White

OPTIONS

D7 = 0-10V low-voltage dimming
 MS = Motion Sensor - Bi-Level
 EL = Integral Emergency Battery - 900lm / 90min
 Note: EL Compatible with 30 Watt / 45 Watt Only
 REL = Remote Emergency Battery - 900lm / 90min
 Note: 50 Watt / 60 Watt Compatible with REL Only

PENDANT SWIVEL CANOPY TYPES



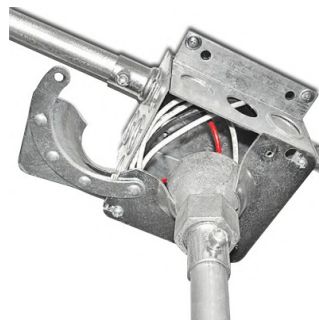
**Swivel Canopy 4" for
Round/Octagonal J-BOX (SWC-R)**



**Swivel Canopy 4" for
Square J-BOX (SWC-S)**



**Swivel Canopy 4" for
Round/Octagonal J-BOX
Rapid Mount with Hinged Door
(SWC-RR)**

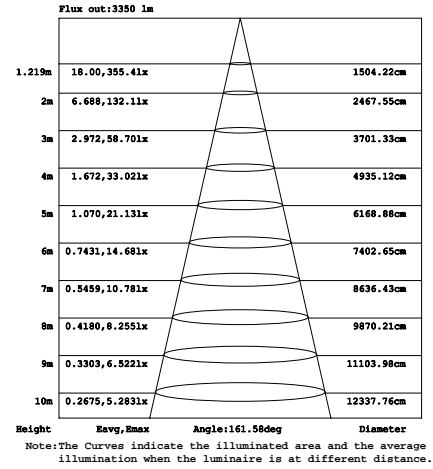
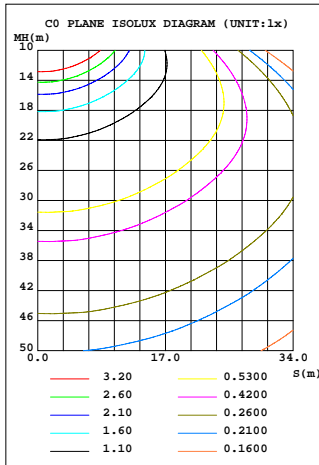
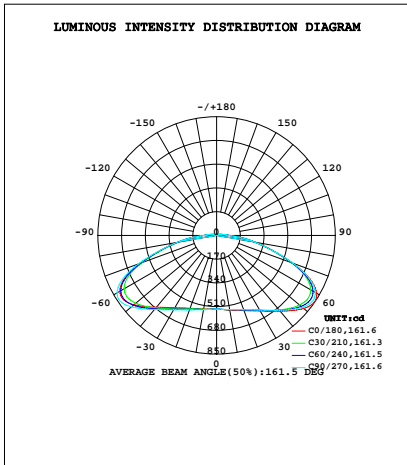


**Swivel Canopy 4" for
Square J-BOX
Rapid Mount with Hinged Door
(SWC-SR)**

PHOTOMETRIC DATA

Test# EGR20170720 Summary	
Total Lumen Output	3621.88 Lumens
Efficacy (Lm/W)	117.99 Lm/W

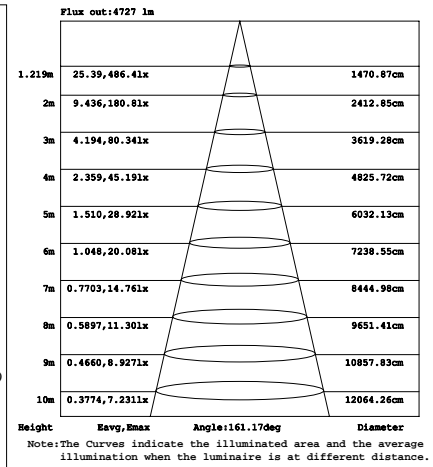
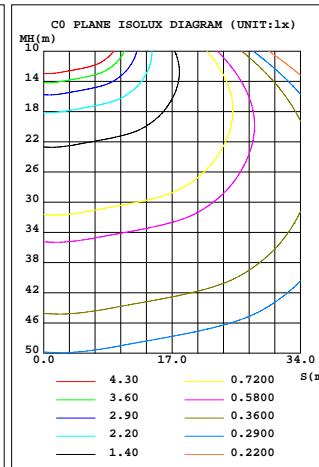
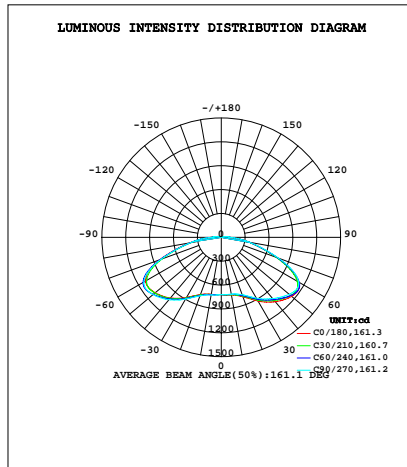
Model EGR-SM-PG-LED30-5K-UNV — Electrical Test Conditions							
Temp	Voltage	Current	Power	Power Factor	Frequency	Lamps	Test Date
25°C (±1°C)	120.0	0.2579A	30.70W	0.9911	60.01Hz	1	7/20/2017



PHOTOMETRIC DATA

Test# EGR20170718 Summary	
Total Lumen Output	5090.9 Lumens
Efficacy (Lm/W)	115.69 Lm/W

Model EGR-SM-PG-LED45-5K-UNV — Electrical Test Conditions							
Temp	Voltage	Current	Power	Power Factor	Frequency	Lamps	Test Date
25°C (±1°C)	120.0	0.3691A	44.01W	0.9935	60.01Hz	1	7/18/2017



PHOTOMETRIC DATA

Test# EGR20170717 Summary	
Total Lumen Output	7303.09 Lumens
Efficacy (Lm/W)	119.70 Lm/W

Model EGR-SM-PG-LED60-5K-UNV — Electrical Test Conditions							
Temp	Voltage	Current	Power	Power Factor	Frequency	Lamps	Test Date
25°C (±1°C)	120.0	0.5133A	61.01W	0.9909	60.01Hz	1	7/17/2017

