

VTR Series



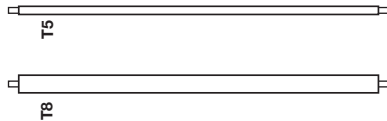
We reserve the right to revise the design or components of any product without notice.

Catalog Number	
Project/Location	Type
Approved By	

Vapor-Tite / Vandal resistant T5/T8 — Fiberglass Housing — For Damp/Dusty/Wet Locations

SPECIFICATIONS

- GASKETING— Continuous Poured in Place to seal Outside Contaminants
- HOUSING— 5VA rated Fiberglass for maximum strength and rigidity.
- LATCHES— Clear Polycarbonate (CPL) or Stainless Steel (SSL) Snap-In Latches.
- REFLECTOR— 20G cold rolled steel die formed with multiple bends for maximum rigidity and unitized with all electrical components
- FINISH— All metal parts are phosphate pre-treated and finished in white oven baked polyester powder coat.
- LENS— Injection Molded UV stabilized Polycarbonate Diffuser (Style A) that maximizes seal with gasketing to deter un-authorized entry to lamp compartments.
Or Lineal Ribbed UV stabilized Polycarbonate (Style B) for clean look and breakage resistance
- GEAR TRAY— Efficiently carries Electrical Gear, maintaining Weatherproof Enclosure while reducing cost and weight
- LAMPS— F14T5, F21T5, F28T5, F35T5, F54T5-HO, F80T5-HO, F17T8, F32T8, F48T8-HO Bi-Pin Fluorescent – BY OTHERS
- BALLAST— Standard EBU – Instant Start universal volt (120-277v) electronic. Optional 120/277 volt Electronic <10 THD CW Instant Start – 0° start; PRS – Programmable Rapid Start
- MOUNTING— Standard Mounting Brackets — Included with Fixture — snap onto housing (no holes to drill through housing) at most points along fixture for variable mounting centers (brackets cannot be fitted over latches).
- UL/ULC— UL/ULC Listed to U.S. and Canadian safety standards Suitable For Wet Location



VTR Series Wide Distribution

Lamp Size/Type	VTR
Dimensions (nominal)	7" wide x 48" long x 6" deep
T5 Bi-Pin Fluorescent	(2 or 3)28w
T5-HO Bi-Pin Fluorescent	(2 or 3)54w
T8 Bi-Pin Fluorescent	(2 or 3)32w
T8 LED	(2 or 3)15w

Catalog Number Ordering Guide

Example: VTR C SSL T8(2)32 EBU PRS

- SERIES**
VTR = VTR Series
4 Foot Length
- LENS**
Style A = Injection Molded Prismatic
Style B = Lineal Ribbed
Style C = Narrow Lineal Ribbed
- LATCHES**
CPL = Clear Polycarbonate Latches
SSL = Stainless Steel Latches
- LAMP TYPE**
T5 = F14, F21, F28, F35 T5 Fluorescent Bi-Pin Lamps
T5-HO = F54 T5 High Output Fluorescent Bi-Pin Lamps
T8 = F17, F32, F40 T8 Fluorescent Bi-Pin Lamps
T8 LED = Super Bright White LED

- LAMP QUANTITY/WATTAGE**
Refer to Above Chart
- VOLTAGE and POWER FACTOR**
EBU = High Temp Universal Volt (120-277v) Electronic Ballast Instant Start for Fluorescent
120 = 120 Volts
277 = 277 Volts
347 = 347 Volts
EB = Electronic Ballast

- OPTIONS**
2EB = Two Electronic Ballasts
DIM = Dimming Ballast
EL = Any Emergency Battery for CFL (EL, ELH, EL-CW, REL) See EL Chart immediately following Vandal T5T8 Tab
FUS = Single Fusing
DFUS = Double Fusing
PRS = Programmable Rapid Start Ballast



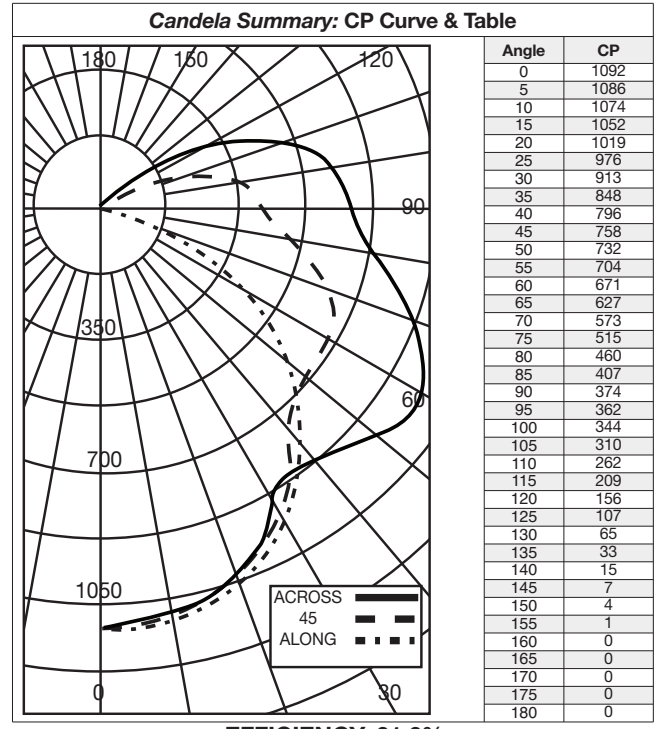
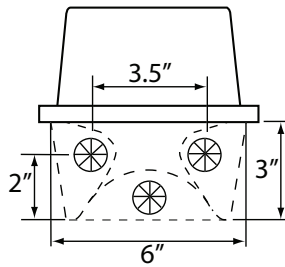
PHOTOMETRIC DATA:

VTR SERIES

LSI test # 25212 VTR-B-CPLT8(3)32MRFS

with specular reflector and clear plastic textured wrap lens

Zonal Lumen Summary			
Zone	Lumens	%Lamp	%Luminaire
0-30	849	9.93	16.11
0-40	1381	16.15	26.21
0-60	2598	30.38	49.31
0-90	4209	49.22	79.90
40-90	2828	33.08	53.69
60-90	1611	18.84	30.59
90-180	1059	12.38	20.10
0-180	5267	61.61	100.00



EFFICIENCY: 61.6%

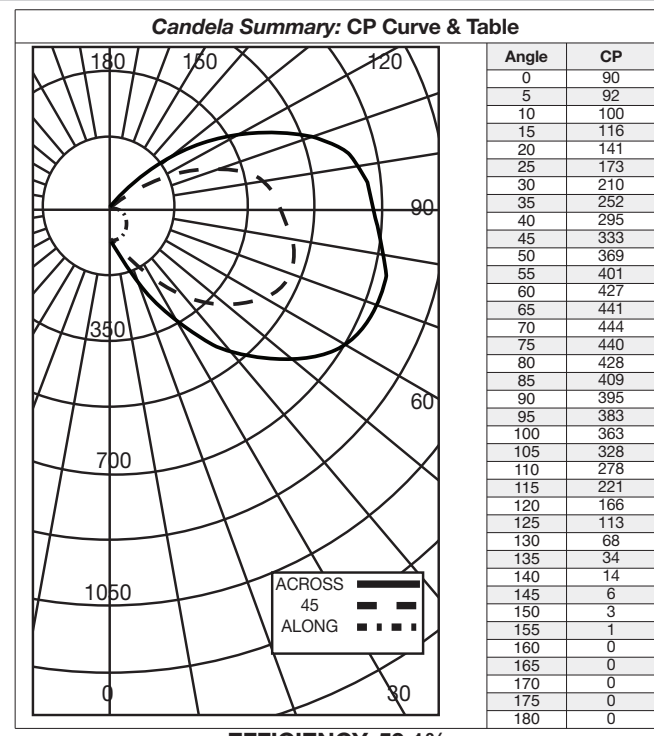
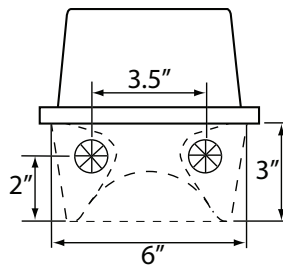
Coefficients of Utilization									
Room Cavity Ratio	PCC>	90%			70%			50%	
	PW>	70%	50%	30%	70%	50%	30%	50%	30%
	0	73	73	73	67	67	67	62	62
1	65	61	58	59	56	53	51	49	
2	59	53	47	53	48	44	44	40	
3	53	46	40	48	42	37	38	34	
4	49	40	34	44	37	32	34	29	
5	44	35	29	40	32	27	29	25	
6	41	31	25	37	29	23	26	22	
7	37	28	22	34	26	21	24	19	
8	34	25	19	31	23	18	21	17	
9	32	23	17	29	21	16	19	15	
10	29	21	15	27	19	14	18	13	

Rm. Percentage=20%; PCC=Ceiling Reflectance; PW=Wall Reflectance

LSI test # 25216 VTR-B-CPLT8(2)32-EB-MR-FS

with specular reflector and clear plastic textured wrap lens

Zonal Lumen Summary			
Zone	Lumens	%Lamp	%Luminaire
0-30	125	2.19	3.71
0-40	284	4.99	8.45
0-60	902	15.82	26.79
0-90	2248	39.44	66.78
40-90	1964	34.45	58.33
60-90	1346	23.62	39.99
90-180	1118	19.62	33.22
0-180	3367	59.06	100.00



EFFICIENCY: 59.1%

Coefficients of Utilization									
Room Cavity Ratio	PCC>	90%			70%			50%	
	PW>	70%	50%	30%	70%	50%	30%	50%	30%
	0	69	69	69	62	62	62	55	55
1	60	55	51	53	49	45	43	40	
2	53	46	40	46	40	35	35	31	
3	47	39	32	41	34	29	29	25	
4	43	33	27	37	29	24	25	21	
5	39	29	22	33	25	19	22	17	
6	35	25	19	30	22	16	19	14	
7	32	22	16	28	19	14	17	12	
8	29	20	14	25	17	12	15	11	
9	27	18	12	23	16	11	13	9	
10	25	16	11	22	14	9	12	8	

Rm. Percentage=20%; PCC=Ceiling Reflectance; PW=Wall Reflectance

We reserve the right to revise the design or components of any product due to parts availability or change in UL standards, without assuming any obligation or liability to modify any products previously manufactured and without notice. This literature depicts a product DESIGN that is the SOLE and EXCLUSIVE PROPERTY of ECLIPSE LIGHTING, INC.—An Illinois Corporation. In compliance with U.S. COPYRIGHT and PATENT requirements, notification is hereby presented in this form that this literature, or the product it depicts, is NOT to be copied, altered or used in any manner without the express written consent of, or contrary to the best interests of, ECLIPSE LIGHTING, INC.—05/04/1994



9245 W. Ivanhoe St. | Schiller Park, IL 60176 | p: (847) 260-0333 | f: (847) 260-0344
www.eclipselightinginc.com | quotes@eclipselightinginc.com

© 2008 Eclipse Lighting Inc.
All Rights Reserved - Designs Protected by Copyright

Rev. 07/09 | 2