

Samurai

*Wall, Ceiling, Recessed
or Pendant Mount*

INDOOR/OUTDOOR LED Luminaire

We reserve the right to revise the design or components of any product without notice.

CATALOG #		TYPE
PROJECT/LOCATION		
APPROVED BY		

SPECIFICATIONS

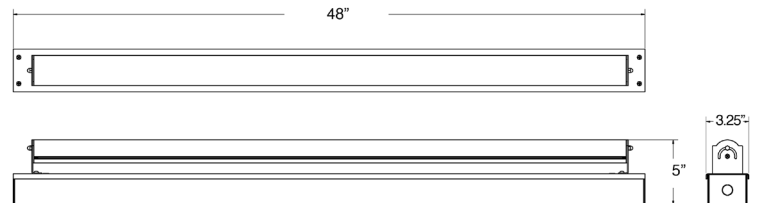
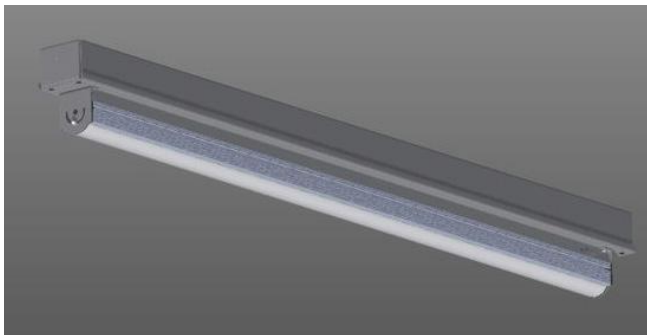
- APPLICATION — Cove Lighting, Store Fixture, Display.
- COVER — Fastens with two screws, no components.
- FINISH — White—Standard.
- HOUSING — Extruded aluminum houses all wiring and components for ease of installation.
- LENS — Opal Lens Standard, Optional Clear Polycarbonate. Specify Style A (Bubble Lens) or Style B (Flat Lens).
- MOUNTING — Surface Adjustable (Wall/Ceiling); Pendant or Recessed Mount.
- COMPLIANCE — Built to comply with U.S. and Canadian safety standards.



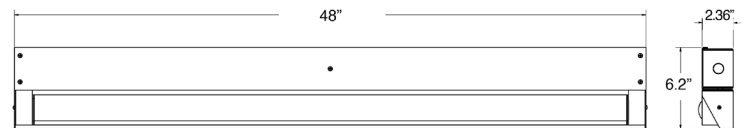
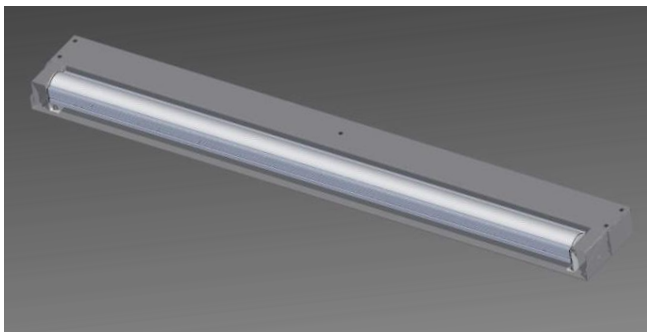
ARRA
Compliant

OPTIONS

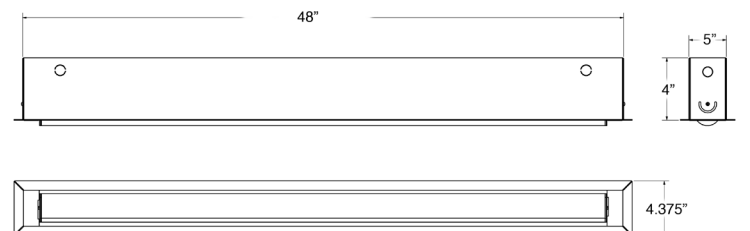
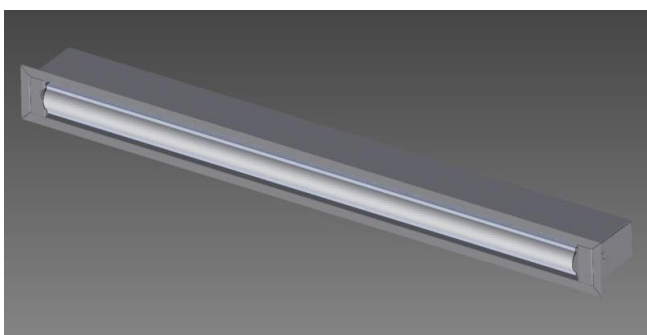
SURFACE MOUNT



COVE MOUNT



RECESSED MOUNT



Samurai

Wall, Ceiling, Recessed
or Pendant Mount

INDOOR/OUTDOOR LED Luminaire

ORDERING GUIDE: Series Style Length Mounting Color Temp Voltage Finish Options

SERIES

SI = Samurai Linear

STYLE

A = Bubble Lens
B = Flat Lens

LENGTH WATTAGE LUMENS

48 = 48" 50W LED 6500

CL = Custom Length — Consult Factory

MOUNTING

CM = Ceiling Mount (STANDARD)

CV = Cove Mount

WM = Wall Mount (2" Wide Bracket is Standard)

PEND-ST=Pendant with Stem — Consult Factory

R = Recessed Mount — Consult Factory

VOLTAGE

EBU = Universal Volt (120-277v) Electronic Driver

COLOR TEMPERATURE

27K = ±2700K range

3K = ±3000K range

35K = ±3500K range

4K = ±4000K range

5K = ±5000K range

6K = ±6000K range

65K = ±6500K range

BLU = Blue

RGB = Color Changing

FINISH

WH = White Finish (STANDARD)

BK = Black Finish

BZ = Bronze Finish

CC = Custom Color Finish

PNA = Painted Natural Aluminum

OPTIONS

BL1 = Bi-Level Light (High/Low)

— Single AC Input Feed, with Switch Sensor (Required)

BL2 = Bi-Level Light (High/Low)

— Wired for Dual AC Input Feeds

CL = Clear Polycarbonate Lens

D7 = 0-10V low-voltage LED Dimming

(100-30% Standard, Consult Factory for Other)

D8 = LED Dimming: Forward Phase — Triac

MSE = Motion Sensor External for LED

Specify Finish: White (WH) or Bronze (BZ)

RB = Rotatable Brackets

SG = 10KA Surge Protection for LED fixtures

(meets ANSI spec C62.41.2)

WET = Wet Location — Consult Factory

EMERGENCY BATTERY OPTIONS

No onsite Emergency Power (AC or DC) is provided

Specify Fixture Voltage: 120V or 277V Power Feed

A=120V or B=277V


LED Emergency Battery

EL88=Integral: LED 16W (Fulham)—Factory Recom'd

LED EMERGENCY CIRCUIT

High Lumen Emergency Battery Backup are expensive, therefore **for ease of maintenance and greater capacity of LED mini inverter is highly recommended.**

(Consult Factory Representative)

 ONE INVERTER
\$500

VS

 SIX BATTERY PACKS
\$3000

NOTES:

Ⓢ Consult Factory for other Voltage; Consult Factory for other CKT.

PATENT PENDING