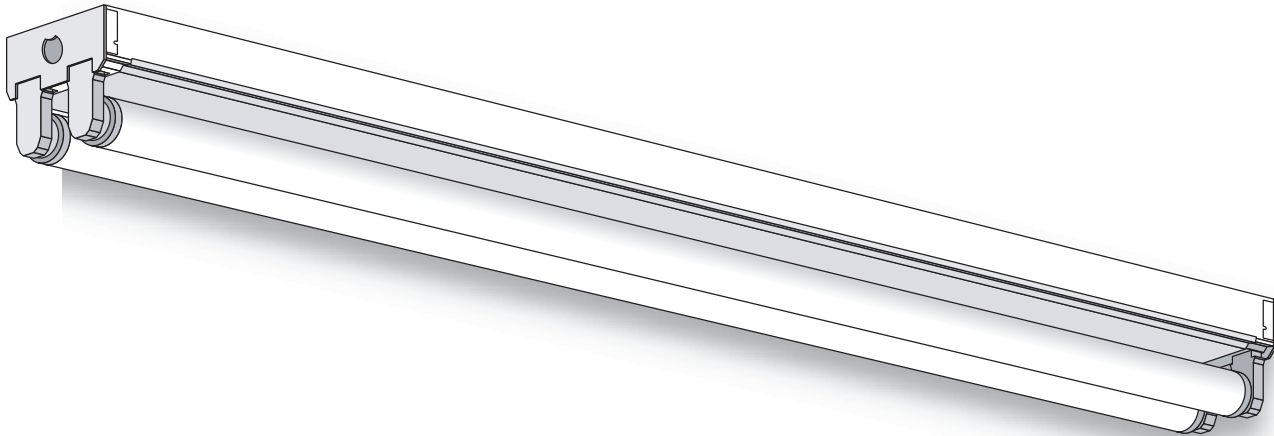


SEP

SHALLOW ECONOMY STRIP

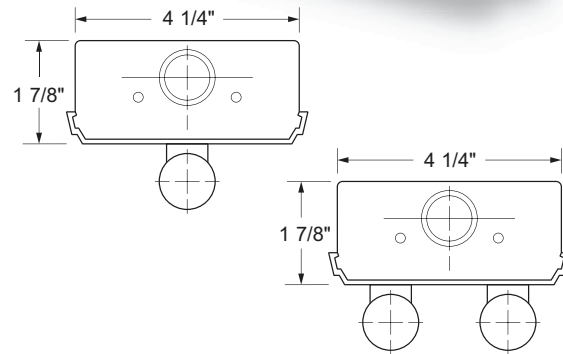
We reserve the right to revise the design or components of any product without notice.

CATALOG #		TYPE
PROJECT/LOCATION		
APPROVED BY		



GENERAL DESCRIPTION

An all-purpose 1- or 2-light economy strip for a wide range of bi-pin and slimline fluorescent lighting applications. All parts snap together for ease of installation and maintenance. Side knockouts are provided for a convenience outlet, a pull switch and conduit. Chain hanger slots are provided on the sides and back.



End Views: SEP Series 1- and 2-Light Models

SPECIFICATIONS

- Housing:** Die-formed heavy-gauge cold rolled steel.
- Cover:** Snap-on type, fabricated in two sections for 72" and 96" bodies to simplify installation.
- Ends and Socket Plates:** Snap-in type. Ends also function as couplers for continuous row installations.
- Finish:** White polyester polymer with a minimum of 82% reflectivity.
- Mounting:** Designed for surface, stem or chain hanging. Can be installed as individual units or in continuous rows.

OPTIONS

- SKT2:** T8 Sockets (2)
- SKT4:** T8 Sockets (4)
- EBU:** T8 120/277 V Ballast
- LEDL0129:** 4' 18 Watt LED Lamp (1425 Lumens)
- LEDL0135:** 2' 12 Watt LED Lamp (1140 Lumens)
- LEDSU:** Provision for LED Lamps (By Others)

Catalog No.	Lamps	Length	Type
SEP120	1	24"	Bi-pin
SEP130	1	36"	Bi-pin
SEP130TAN	2	72"	Bi-pin
SEP140	1	48"	Bi-pin
SEP140TAN	2	96"	Bi-pin
SEP148	1	48"	Slimline
SEP172	1	72"	Slimline
SEP196	1	96"	Slimline
SEP220	2	24"	Bi-pin
SEP230	2	36"	Bi-pin
SEP230TAN	4	72"	Bi-pin
SEP240	2	48"	Bi-pin
SEP240TAN	4	96"	Bi-pin
SEP248	2	48"	Slimline
SEP272	2	72"	Slimline
SEP296	2	96"	Slimline