

# Brussels

## Vandal Wall Direct/Indirect INDOOR/OUTDOOR LED Luminaire

We reserve the right to revise the design or components of any product without notice.

CATALOG #		TYPE
PROJECT/LOCATION		
APPROVED BY		

### SPECIFICATIONS

- DRIVER — Universal Voltage 120/277V electronic driver with 0-10V dimming is standard.
- FINISH — White—Standard. Optional Black, Bronze, Painted Natural Aluminum.
- HOUSING — Heavy Gauge aluminum houses all wiring and components.
- LENS — .156 Prismatic Polycarbonate Lens (PGC) is standard and includes Glare Control.
- LIGHT ENGINE — Energy efficient LED.
- COMPLIANCE — Built to comply with U.S. and Canadian safety standards. Suitable for Wet Locations. **Made in USA / Buy America Compliant / Buy American Act.**



### ORDERING INFO

ORDERING GUIDE:	Series	Style	Lens	Length	Wattage	CCT	CRI	Voltage	Finish	Options

#### SERIES

BU = Brussels Series

#### STYLE

- D = Direct (Downlight) — STANDARD
- DF = Down / Forward Throw Light
- DI = Direct (Downlight) / Indirect (Uplight)
- IF = Indirect Forward (Uplight / Forward Throw Light)
- I = Indirect (Uplight Only)

#### LENS

PGC = Prismatic Polycarbonate — STANDARD  
— Includes Glare Control

#### LENGTH

- 1 = 14" L x 4.8" H x 4" D (Not Available with Integral EM)
- 2 = 24" L x 4.8" H x 4" D
- 3 = 36" L x 4.8" H x 4" D
- 4 = 48" L x 4.8" H x 4" D

#### TDM(xx) = Tandem Joined Fixtures

— xx = Total Run Length (inches), ex: TDM96

#### WATTAGE

Refer to Below Chart for Size / Wattage Compatibility  
LED(xx) = LED (xx = Wattage, ex: LED30)

#### COLOR TEMPERATURE (CCT)

- 3K = ±3000K range
- 35K = ±3500K range
- 4K = ±4000K range
- 5K = ±5000K range

#### COLOR RENDERING INDEX (CRI)

80CRI = 80 Color Rendering Index (STANDARD)  
90CRI = 90 Color Rendering Index (Not Available for 5K)

#### VOLTAGE

347 = 347 Volt  
UNV = Universal Volt (120-277v) Electronic Driver

#### STANDARD FINISH

- BK = Black Finish
- BZ = Bronze Finish
- PNA = Painted Natural Aluminum
- WH = White Finish — STANDARD

#### PREMIUM UPCHARGE FINISH

- CC = Custom Color (Visit [www.ralcolor.com](http://www.ralcolor.com))  
— Provide RAL# or Make-to-Match Color Chip
- +AMW = Anti-Microbial White
- +NAT = Epoxy Coating for Natatorium

#### PHOTOCELL OPTION

9328 = Photocell Button (120/277V)

#### CONTROL OPTIONS (Choose from Manual or Sensor)

MANUAL CONTROL (Wall Switch or Control System)

Note: Cannot be used with Sensor Controls below

Note: 0-10V (100-30%) Dimming is Standard

- D7A = 0-10VDC LED Dimming Driver (100-10%)
- D7B = 0-10VDC LED Dimming Driver (100-1%)
- BLS = Bi-Level Switching (Includes Two Drivers)

#### OR

Sensor Control (Sensor Integral to Fixture)

Note: Cannot be used with Manual Controls above

- OCC = Occupancy Sensing | Motion Sensor Integral  
— Microwave / Single Feed / 120/277V Only  
— Standby Dim Level Presets: ON/OFF (0%/100%)
- BLD = Bi-Level Dimming | Motion Sensor Integral  
— Microwave / Single Feed / 120/277V Only  
— Standby Dim Level Presets:  
10% / 20% / 30% (Standard) / 50%
- BLDA = Bi-Level Dimming | Motion Sensor Integral  
— Ambient Light Sensing Feature (AMB)  
— Microwave / Single Feed / 120/277V Only  
— Standby Dim Level Presets: 10% / 20% / 30% / 50%  
— BLDA Requires Photocell Option (9328)

#### BACK BOX OPTIONS

Note: Inclusion of Back Box disqualifies ADA Compliance.

- BB1 = 14" X 1.75" Back Box
- BB2 = 24" X 1.75" Back Box
- BB3 = 36" X 1.75" Back Box
- BB4 = 48" X 1.75" Back Box

#### MISC OPTIONS

- FUS = Single Fusing
- PS = On/Off Push Switch (120V Only)

#### EMERGENCY BATTERY OPTIONS

Meets California Energy Commission Title 20:

(CEC-400-2014-009-CMF) Efficiency Standards

- EL8W = Integral LED 8 Watt
- EL10W = Integral LED 10 Watt
- EL16W = Integral LED 16 Watt

- REL8W = Remote LED 8 Watt
- REL10W = Remote LED 10 Watt
- REL16W = Remote LED 16 Watt

#### Cold Weather Emergency Batteries:

Operating Temp: -20°C thru 50°C / NON-CEC Compliant

- EL10W-CW = Integral LED 10 Watt (Cold Weather)
- REL10W-CW = Remote LED 10 Watt (Cold Weather)

#### ACCESSORY OPTIONS (order as a separate line)

- 9002 = Tamperproof Screwdriver

#### NOTES:

- 2 Backbox (BB) Required.
- 20 Max mounting height of fixture is 18' (18 feet)
- 50 Max WHIP length of the REL is 8 feet.
- 55 Final selection of the Battery Pack under discretion of Factory

		WATTAGE			
Fixture		1 Foot	2 Foot	3 Foot	4 Foot
Dimensions L x H x D		14" x 4.5" x 4"	24" x 4.8" x 4"	36" x 4.8" x 4"	48" x 4.8" x 4"
Light Emitting Diode	LED	20w	20w / 30w / 40w	30w / 40w	40w / 50w

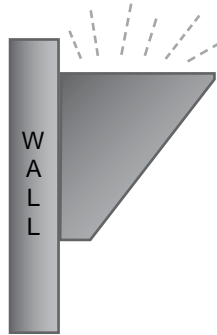
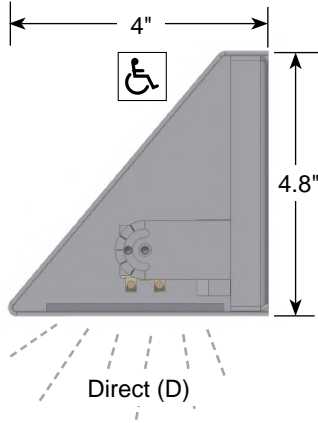
# Brussels

## Vandal Wall Direct/Indirect INDOOR/OUTDOOR LED Luminaire

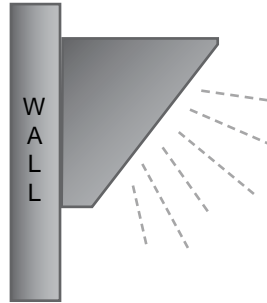
We reserve the right to revise the design or components of any product without notice.

CATALOG #		TYPE
PROJECT/LOCATION		
APPROVED BY		

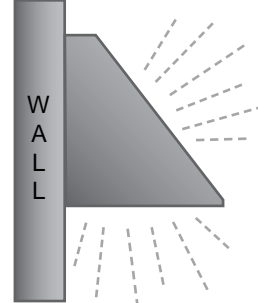
DIMENSIONS \_\_\_\_\_ STYLE \_\_\_\_\_



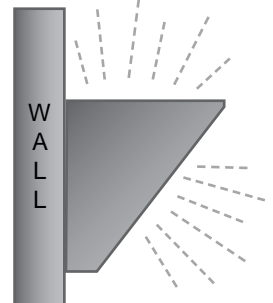
Indirect (I)



Down Forward (DF)

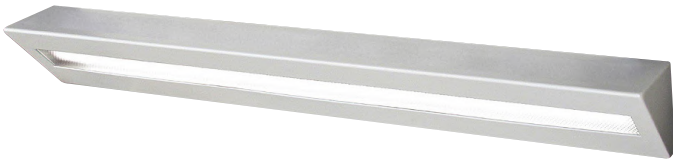


Direct / Indirect (DI)



Indirect Forward (IF)

BRUSSELS DIRECT / INDIRECT MODELS \_\_\_\_\_



**Brussels 4-Foot Down / Forward (DF)**  
Angled Downward Throw Light



**Brussels 4-Foot Direct / Indirect Style (DI)**  
Downlight & Uplight

LED WATTAGE/LUMEN DATA CHARTS \_\_\_\_\_

LED Watts vs. LED Color Temp — Lumen Output				
Color Temperature	3000K (3K)	3500K (35K)	4000K (4K)	5000K (5K)
15 Watt	2298 Lumens	2333 Lumens	2381 Lumens	2452 Lumens
20 Watt	3461 Lumens	3503 Lumens	3578 Lumens	3685 Lumens
30 Watt	4607 Lumens	4677 Lumens	4776 Lumens	4919 Lumens
40 Watt	5722 Lumens	5793 Lumens	5917 Lumens	6099 Lumens

NOTE: Lumen Output listed is estimated based upon delivered lumens at 25°C. See Lumen Ambient Temperature Multipliers Table to determine lumen output for other ambient temps.

Lumen Ambient Temperature (LAT) Multipliers	
Ambient Temperature	Lumen Multiplier
0°C / 32°F	1.05
10°C / 50°F	1.03
20°C / 68°F	1.01
<b>25°C / 77°F</b>	<b>1.00</b>
30°C / 86°F	0.99
40°C / 104°F	0.96

NOTE: Use these multipliers to determine relative lumen output for average ambient temps for 0-40°C (32-104°F).

Projected LED Lumen Maintenance	
Operating Hours	Lumen Maintenance Factor
0 Hrs	1.0
25,000 Hrs	0.97
50,000 Hrs	0.95
100,000 Hrs	0.90

# Brussels

## Vandal Wall Direct/Indirect INDOOR/OUTDOOR LED Luminaire

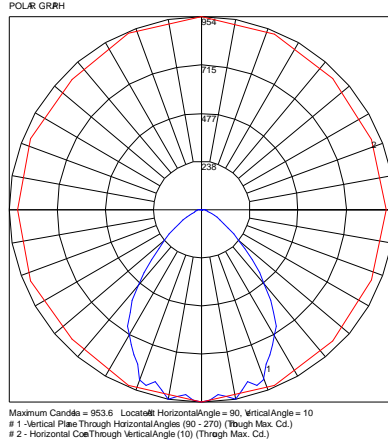
We reserve the right to revise the design or components of any product without notice.

CATALOG #		TYPE
PROJECT/LOCATION		
APPROVED BY		

### PHOTOMETRIC DATA

Summary of Results   BU-D-PGC-2-LED20-4K-80CRI-UNV-D7					
Lumen Output	Efficacy	Input Power	CCT	Distribution	BUG Rating
1939.2 Lumens	95.2 Lm/W	20.37W	4098K	Type II	B1-U0-G0

LCS Summary	
Zone	Lumens
Forward Low (0-30)	360.5
Forward Medium (30-60)	497.4
Forward High (60-80)	67.9
Forward Very High (80-90)	6.6
Back Low (0-30)	363.7
Back Medium (30-60)	506.2
Back High (60-80)	73.2
Back Very High (80-90)	7.2
Up Low (90-100)	0.0
Up High (100-180)	0.0



Summary of Results   BU-D-PGC-4-LED40-4K-80CRI-UNV-D7					
Lumen Output	Efficacy	Input Power	CCT	Distribution	BUG Rating
3757.4 Lumens	96.2 Lm/W	39.06W	4054K	Type VS	B2-U0-G1

LCS Summary	
Zone	Lumens
Forward Low (0-30)	675.6
Forward Medium (30-60)	1050.6
Forward High (60-80)	152.2
Forward Very High (80-90)	14.0
Back Low (0-30)	668.6
Back Medium (30-60)	1033.6
Back High (60-80)	150.5
Back Very High (80-90)	13.8
Up Low (90-100)	0.0
Up High (100-180)	0.0

