

Astro L/XL/XL1/XL2

DECORATIVE HIGH ABUSE LED FIXTURE

Wall Or Ceiling Mount



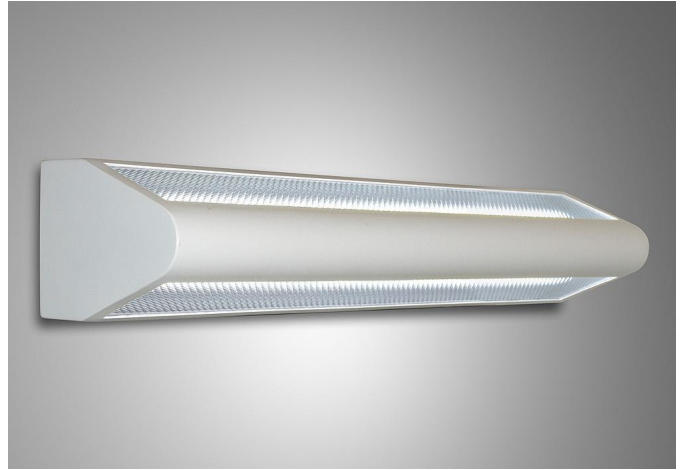
ARRA
Compliant

We reserve the right to revise the design or components of any product without notice.

CATALOG #		TYPE
PROJECT/LOCATION		
APPROVED BY		

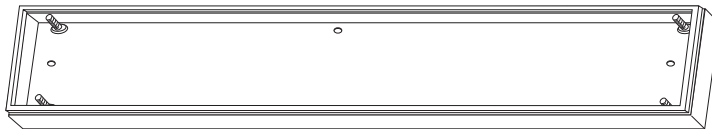
SPECIFICATIONS

- DRIVER — Universal Volt 120/277v Electronic Driver is standard for LED.
- EMERGENCY — LED — Remote or Integral.
- HOUSING — Heavy Aluminum with internally reinforced double thickness welded ends for maximum strength and rigidity. Open Window is Standard. Optional Up/Down Barrier (UDB)—internal, for uplight or downlight only.
- BACKPLATE — 16G aluminum die formed with multiple bends for maximum rigidity and unitized with all electrical components.
- FINISH — All metal parts are phosphate pre-treated and finished in oven baked polyester powder coat. Painted Natural Aluminum (PNA) is Standard, Optional Black (BK), Bronze (BZ) or White (WH).
- LENS — 1/8" (.125) thick U.V. stabilized Clear Prismatic POLYCARBONATE lens. Opal White Translucent is optional.
- FASTENER — Stainless steel torx tamperproof screws to secure housing to backplate.
- MOUNTING — Ceiling/Wall Mount. Optional 6" length Wall Bracket Assembly Rotatable (WMB-R).
- LIGHT ENGINE — Bi-Pin LED; LED.
- COMPLIANCE — Built to comply with U.S. and Canadian safety standards Suitable For Wet Locations.

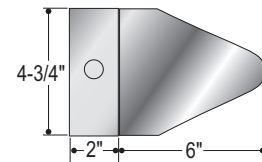


OPTIONS

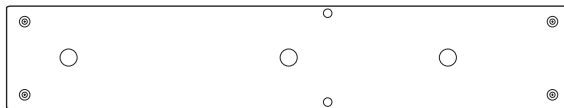
Backbox (BB) option — Required for EL



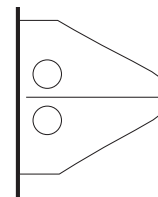
Astro XL2 Shown with BB option



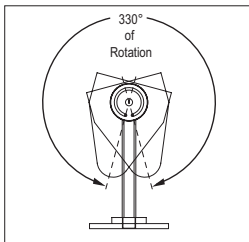
Astro XL/XL2 Mounting



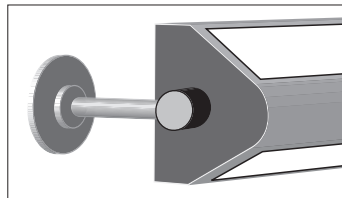
Shown with UDB option



Shown with WMB-R 330° of rotation



Shown with WMB-R (6" length)



Shown with Opaque Top (OT)



PHOTOMETRY

Model No.	Base Orientation	Processing Symmetry	Luminous Opening (in)	IES File Mounting Height (ft)		
AST-XL2-W-LED80-3K-EBU-BK	Horizontal	Bisymmetric	49.5 x 3	10.0		
Temp	Input Voltage	Input Current	Input Power	Power Factor	Absolute Luminous Flux	Lumen Efficacy (LPW)
25.7°C	120.11	644.3	77.110	0.997	4125.000	53.5
Start Candelas (cd)	Candelas @ +15min	Candelas @ +30min	Range (cd)		Range (Watts)	
550.648	550.529	550.302	547.89	553.40	76.77	77.55



Astro L/XL/XL1/XL2

DECORATIVE HIGH ABUSE
LED FIXTURE
Wall Or Ceiling Mount

LAMP TYPE/QTY/WATTAGE ¹				
Visit www.eclipselightinginc.com for available IES files				
Fixture	Astro L	Astro XL	Astro XL1	Astro XL2
Dimensions	13" x 7" x 4"	26" x 4 1/4" x 6"	36" x 4 1/4" x 6"	50 1/8" x 4 1/4" x 6"
Light Emitting Diode	LED	15w	20w	30w
				40w or 60/80w ²

**Consult Factory for CFL, Linear Fluorescent, HID, and Induction Lamping*

ORDERING GUIDE:

Series	Mounting	Lamp/Wattage	Color	Voltage	Finish	Options
<input type="text"/>	<input type="text"/>	<input type="text"/>	<input type="text"/>	<input type="text"/>	<input type="text"/>	<input type="text"/>

SERIES

- AS-L = Astro L Series (13")
- AS-XL = Astro XL Series (26")
- AS-XL1 = Astro XL1 Series (36")
- AS-XL2 = Astro XL Two Series (51")

MOUNTING

- C = Ceiling Mount
- W = Wall Mount

LAMP TYPE/QUANTITY/WATTAGE

Refer to Above Chart

LED COLOR TEMPERATURE

- 3K = ±3000K range LED
- 4K = ±4000K range LED
- 5K = ±5000K range LED

VOLTAGE

- 120 = 120 Volts
- 277 = 277 Volts
- 347 = 347 Volts
- EBU = Universal Volt (120-277v) Electronic Ballast
- 2EBU = Two Electronic Ballasts

FINISH

- BK = Black
- BZ = Bronze
- CC = Custom Color
- PNA = Painted Natural Aluminum STANDARD
- WH = White

OPTIONS

- 9002 = Tamperproof Screwdriver
- ADA = ADA Size Depth
- BB = Backbox for surface conduit or tandem runs (Non-ADA)
- FUS = Single Fusing
- OPL = Opal White Lens
- OT = Opaque Top for Downlight Only
- TDM = Tandem for Row Mount²
 - Includes Mounting Hardware
- UDB = Up/Down Barrier - For Use with 2EBU
- WMB-R = Wall Bracket Assembly Rotatable Mtg Kit (6" length)

LED OPTIONS

- BL1 = Bi-Level Light (High/Low)
 - Single AC Input Feed, with Switch Sensor (Required)
- BL2 = Bi-Level Light (High/Low)
 - Wired for Dual AC Input Feeds
- D7 = 0-10V low-voltage LED Dimming (100-30% Standard, Consult Factory for Other)
- D8 = LED Dimming: Forward Phase (Triac)
- GC = Diffusion Lens for Glare Control of LED
- SG = 10KA Surge Protection for LED fixtures (meets ANSI spec C62.41.2)
- MSE = Motion Sensor External—Single circuit-all on, all off
 - Specify Finish: White (WH)/Bronze (BZ)
- MSE2 = Motion Sensor External—Dual circuit, half on half off
 - Specify Finish: White (WH)/Bronze (BZ)
- MSI = Motion Sensor Integral² (Microwave)
 - Single Circuit: OFF / ALL-ON
- MSI2 = Motion Sensor Integral² (Microwave)
 - Single Circuit: HALF-ON / ALL-ON
- MSI3 = Motion Sensor Integral² (Microwave)
 - Multi-Level Daylight Control
 - Single Circuit: OFF/ DIM / ALL-ON

EMERGENCY OPTIONS^{3,5}

No onsite Emergency Power (AC or DC) is provided
Specify Fixture Voltage: 120V or 277V Power Feed
A=120V or B=277V

LED Emergency Battery

Factory Recommended

- EL88² = LED 16 Watt (Integral)
- REL88 = LED 16 Watt (Remote)

Premium (Bodine/Iota)

- REL61 = LED 12 Watt (Remote)
- REL67 = LED 23 Watt Cold Weather (Remote)

NOTES:

- ¹ Consult Factory with requests regarding lamp sources, wattages or voltages not shown.
- ² Backbox (BB) Required.
- ³ Consult Factory for additional Emergency Battery options.
- ⁴ 2EB or 2EBU required.
- ⁵ Max mounting height of fixture is 10' (10 feet)

- ¹ All brands do not currently offer both T5 & T8 step dimming ballasts. Unless you specify a brand, we will select it for you.
- ³ Battery Available as Integral or Remote - Specify REL for Remote option (ie. EL1 = Integral; REL1 = Remote)
- ⁵ Due to form and fit, final selection of the Battery Pack under discretion of Factory

Test # 102063649CHI-009

Test Date: 07/02/2015

AST-XL2-W-LED80-3K-EBU-BK

Tested in accordance with LM-79-80
The results contained in this summary report pertain only to the tested sample

Zonal Lumen Summary		
Zone	Lumens	% Luminaire
0-30	645.6	15.6
0-40	1,025.0	24.8
0-60	1,678.2	40.7
60-90	388.7	9.4
0-90	2,066.9	50.1
90-180	2,058.1	49.9
0-180	4,125.0	100

Summary of Results	
Total Lumen Output	4125
Efficacy (Lm/W)	53.5

Cone of Light Tabulation		
Mounting Height (Ft)	Center Beam FC	Beam Width (Ft)
8.3	12.42	15.8
16.7	3.10	31.7
25.0	1.38	47.5
33.3	0.78	63.4
41.7	0.50	79.2
50.0	0.34	95.0

Electrical Test Conditions				
Temp	Voltage	Input Current	Input Power	Power Factor
25°C (±1°C)	120.11	644.3	77.110	0.997

