

572 - 574

Vandal Resistant Linear Fixture

We reserve the right to revise the design or components of any product without notice.

CATALOG #		TYPE
PROJECT/LOCATION		
APPROVED BY		

SPECIFICATIONS

- DRIVER** — Universal volt (120-277v) electronic driver with standard 0-10V low voltage dimming.
- FINISH** — All metal parts are 5 stage pre-treated and finished in white polyester powder coat.
- HOUSING** — Heavy gauge extruded aluminum with cast aluminum end caps. Includes knockouts for surface conduit and tandem mounting.
- LENS** — .130" thick U.V. stabilized "Satinized" Polycarbonate Lens (SPL) is Standard with no LED Striations. Optional Clear Prismatic Polycarbonate Lens (CPR) is available.
- LENS FASTENERS** — Recessed Allen set screws to secure lens in place (2) each side (4) total.
- REFLECTOR** — Formed aluminum with multiple bends for maximum rigidity and unitized with all electrical components.
- COMPLIANCE** — Built to comply with U.S. and Canadian Safety Standards.
Complies with Buy American Act. Suitable For Wet Location Covered Ceiling.



ORDERING INFO

Series	Lens	Wattage	CCT	CRI	Voltage	Finish	Options
<input type="text"/>	<input type="text"/>	<input type="text"/>	<input type="text"/>	<input type="text"/>	<input type="text"/>	<input type="text"/>	<input type="text"/>

ORDERING GUIDE:

SERIES

- 572 = 572 Series 2 Ft
- 574 = 574 Series 4 Ft

LENS

- SPL = Satinized Polycarbonate Lens (Standard)
- CPR = Clear Prismatic Polycarbonate Lens

WATTAGE

Note: Refer to Below Chart for Size / Wattage Compatibility
LED(xx) = LED (xx = Wattage, ex: LED40)

COLOR TEMPERATURE (CCT)

- 3K = ±3000K range LED
- 35K = ±3500K range LED
- 4K = ±4000K range LED
- 5K = ±5000K range LED

COLOR RENDERING INDEX (CRI)

- 80CRI = 80 Color Rendering Index (STANDARD)
- 90CRI = 90 Color Rendering Index

VOLTAGE

- 347 = 347 Volts
- UNV = Universal Volt (120-277v) Electronic Driver

STANDARD FINISH

- BK = Black Finish
- BZ = Bronze Finish
- WH = White Finish

PREMIUM UPCHARGE FINISH

- CC = Custom Color (Visit www.ralcolor.com)
— Provide RAL# or Make-to-Match Color Chip
- +AMW = Anti-Microbial White
- +NAT = Epoxy Coating for Natatorium
— Includes Conformal Coating of LEDs

MOUNTING OPTIONS

TDM(XX) = Tandem Mount (xx = Total Run Length, ex: TDM24)⁷

CONTROL OPTIONS

- MANUAL CONTROL (Wall Switch or Control System)
- Note: 0-10V 100%-30% is Standard
- D7A = 0-10VDC LED Dimming Driver (100-10%)
- D7B = 0-10VDC LED Dimming Driver (100-1%)

OR

Sensor Control (Sensor Integral to Fixture)

- OCC = Occupancy Sensing | Motion Sensor Integral²⁰
— Microwave / Single Feed / 120/277V Only
— Standby Dim Level Presets: ON/OFF (0%/100%)
- BLD = Bi-Level Dimming | Motion Sensor Integral²⁰
— Microwave / Single Feed / 120/277V Only
— Standby Dim Level Presets:
10% / 20% / 30% (Standard) / 50%

MISC OPTIONS

- FUS = Single Fusing
- TP = Tamperproof Screws

EMERGENCY / BATTERY OPTIONS ^{50 55}

No onsite Emergency Power (AC or DC) is provided

Meets California Energy Commission Title 20:

- (CEC-400-2014-009-CMF) Efficiency Standards
- EL8W = Integral LED 8 Watt
- EL16W = Integral LED 16 Watt
- EL20W = Integral LED 20 Watt

- REL8W = Remote LED 8 Watt
- REL16W = Remote LED 16 Watt
- REL20W = Remote LED 20 Watt

ACCESSORY OPTIONS (order as a separate line)

- 9002 = Tamperproof Screwdriver
- REMT = Remote Controller for Sensor Options

NOTES:

- ²⁰ Max mounting height is 18' (18 feet).
- ⁵⁰ Max WHIP length of REL is 8 feet.
- ⁵⁵ Final selection of the Battery Pack under discretion of Factory
- ⁵⁷ Available in 2' and 4' increments only

		SIZE / LED WATTAGE	
Fixture		572	574
Dimensions - W x H x D		25½" x 9" x 4"	49" x 9" x 4"
Light Emitting Diode	LED	20w to 40w (In 5w Increments)	20w to 75w (In 5w Increments)

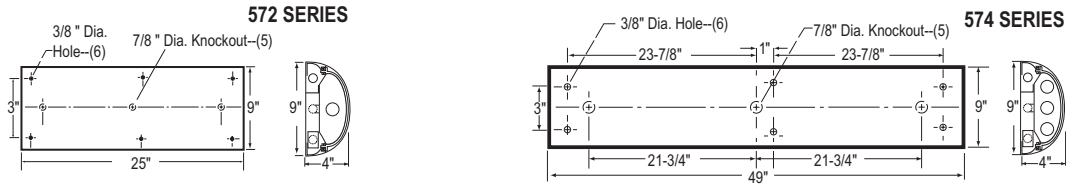
572 - 574

Vandal Resistant Linear Fixture

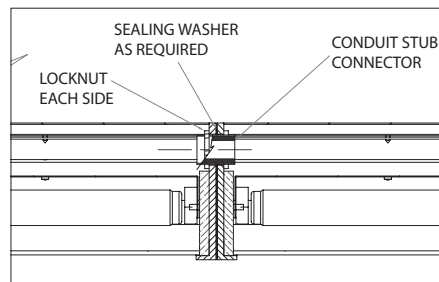
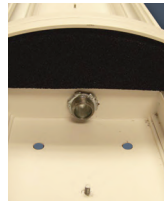
We reserve the right to revise the design or components of any product without notice.

CATALOG #		TYPE
PROJECT/LOCATION		
APPROVED BY		

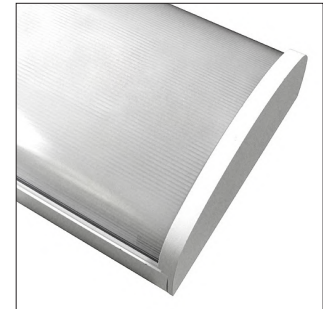
DIMENSIONS



OPTIONS



Instructions for Joining Units for Tandem Option



Clear Prismatic Polycarbonate Lens (CPR)

PHOTOMETRIC DATA

MODEL NUMBER	LUMENS	LPW	WATTAGE	BUG RATING
572-SPL-LED20-4K-80CRI-UNV	2,241.5 Lumens	113.2 LPW	19.8W	B1-U3-G1
572-SPL-LED20-5K-80CRI-UNV	2,285.9 Lumens	115.4 LPW	19.8W	B1-U3-G1
572-SPL-LED25-4K-80CRI-UNV	3,121.7 Lumens	124.9 LPW	25.0W	B1-U3-G1
572-SPL-LED25-5K-80CRI-UNV	3,153.4 Lumens	126.1 LPW	25.0W	B1-U3-G1
572-SPL-LED30-4K-80CRI-UNV	3,948.4 Lumens	132.5 LPW	29.8W	B1-U3-G2
572-SPL-LED30-5K-80CRI-UNV	3,986.1 Lumens	133.8 LPW	29.8W	B1-U3-G2
572-SPL-LED35-4K-80CRI-UNV	4,819.7 Lumens	137.7 LPW	35.0W	B2-U3-G2
572-SPL-LED35-5K-80CRI-UNV	4,819.7 Lumens	137.7 LPW	35.0W	B2-U3-G2
572-SPL-LED40-4K-80CRI-UNV	5,233.5 Lumens	128.3 LPW	40.8W	B2-U3-G2
572-SPL-LED40-5K-80CRI-UNV	5,233.5 Lumens	128.3 LPW	40.8W	B2-U3-G2
574-SPL-LED20-4K-80CRI-UNV	2,730.2 Lumens	136.5 LPW	20.0W	B1-U3-G1
574-SPL-LED20-5K-80CRI-UNV	2,758.2 Lumens	137.9 LPW	20.0W	B1-U3-G1
574-SPL-LED30-4K-80CRI-UNV	4,072.3 Lumens	135.7 LPW	30.0W	B1-U3-G1
574-SPL-LED30-5K-80CRI-UNV	4,114.0 Lumens	137.1 LPW	30.0W	B1-U3-G1
574-SPL-LED40-4K-80CRI-UNV	5,102.4 Lumens	127.6 LPW	40.0W	B2-U3-G2
574-SPL-LED40-5K-80CRI-UNV	5,154.0 Lumens	128.9 LPW	40.0W	B2-U3-G2
574-SPL-LED50-4K-80CRI-UNV	6,082.4 Lumens	121.6 LPW	50.0W	B2-U3-G2
574-SPL-LED50-5K-80CRI-UNV	6,143.0 Lumens	122.9 LPW	50.0W	B2-U3-G2
574-SPL-LED60-4K-80CRI-UNV	7,132.5 Lumens	118.7 LPW	60.1W	B2-U3-G2
574-SPL-LED60-5K-80CRI-UNV	7,201.9 Lumens	120.0 LPW	60.0W	B2-U3-G2
574-SPL-LED75-4K-80CRI-UNV	9,273.7 Lumens	123.6 LPW	75.0W	B3-U3-G2
574-SPL-LED75-4K-80CRI-UNV	9,364.3 Lumens	124.9 LPW	75.0W	B3-U3-G2