

571 - 572 - 573 - 574

Vandal Resistant Linear Fixture LED

We reserve the right to revise the design or components of any product without notice.

CATALOG #		TYPE
PROJECT/LOCATION		
APPROVED BY		

SPECIFICATIONS

- DRIVER — Universal volt (120-277v) electronic driver with standard 0-10V low voltage dimming.
- FINISH — All metal parts are 5 stage pre-treated and finished in white polyester powder coat.
- HOUSING — Heavy gauge extruded aluminum with cast aluminum end caps. Includes knockouts for surface conduit and tandem mounting.
- LENS — .130" thick U.V. stabilized "Satinized" Polycarbonate Lens (SPL) is Standard with no LED Striations. Optional Clear Prismatic Polycarbonate Lens (CPR) is available.
- LENS FASTENERS — Recessed Allen set screws to secure lens in place (2) each side (4) total.
- REFLECTOR — Formed aluminum with multiple bends for maximum rigidity and unitized with all electrical components.
- COMPLIANCE — Built to comply with U.S. and Canadian Safety Standards.
UL Listed #139435. Complies with Buy American Act. Suitable For Wet Location Covered Ceiling.



Series	Mounting	Lens	LED Wattage	CCT	Voltage	Finish	Options

SERIES

- 571 = 571 Series 1 Ft[Ⓢ]
- 572 = 572 Series 2 Ft
- 573 = 573 Series 3 Ft
- 574 = 574 Series 4 Ft

MOUNTING

- BLANK = Ceiling Surface Mount (Standard)
- PEND = Pendant Mount
- WM = Wall Mount (See PSH option for Wet Location)

MOUNTING OPTIONS

- PSH = Protective Shield for Wall Mount
— Required for Outdoor Wet Location
- TDM = Tandem Mount (574 Only)

LENS

- SPL = Satinized Polycarbonate Lens (Standard)
- CPR = Clear Prismatic Polycarbonate Lens

LED WATTAGE

- Note: Refer to Below Chart for Size / Wattage Compatibility
- LED(xx) = LED (xx = Wattage, ex: LED40)
- TS = Non-Shunted Tombstone Sockets
— For Style-B T8 Lamps (By Others)

COLOR TEMPERATURE

- 3K = ±3000K range LED
- 35K = ±3500K range LED
- 4K = ±4000K range LED
- 5K = ±5000K range LED
- 65K = ±6500K range LED

COLOR RENDERING INDEX (CRI)

- 80CRI = 80 Color Rendering Index (STANDARD)
- 90CRI = 90 Color Rendering Index

VOLTAGE

- 347 = 347 Volts
- UNV = Universal Volt (120-277v) Electronic Driver
- 2UNV = Two Universal Volt (120-277v) Electronic Drivers[Ⓢ]

FINISH

- BK = Black
- BZ = Bronze
- WH = White
- +NAT = Conformal Coating - Light Engine Only
- +AM = Anti-Microbial Finish
- CC = Custom Color (Visit www.ralcolor.com)
— Provide RAL# or Make-to-Match Color Chip

DIMMING OPTIONS

- Note: 0-10V 100%-30% is Standard
- D7A = 0-10VDC LED Dimming Driver (100-10%)
- D7B = 0-10VDC LED Dimming Driver (100-1%)

CONTROL OPTIONS

- Note: See Accessory Options for Required Remote Controller
- 9328 = Photocell Button (120/277V)[Ⓢ]
- OCC = Occupancy Sensing | Motion Sensor Integral[Ⓢ]
— Microwave / Single Feed / 120/277V Only
— Standby Dim Level Presets: ON/OFF (0%/100%)
- BLD = Bi-Level Dimming | Motion Sensor Integral[Ⓢ]
— Microwave / Single Feed / 120/277V Only
— Standby Dim Level Presets:
10% / 20% / 30% (Standard) / 50%
- BLDA = Bi-Level Dimming | Motion Sensor Integral[Ⓢ]
— Ambient Light Sensing Feature
— Microwave / Single Feed / 120/277V Only
— Standby Dim Level Presets:
10% / 20% / 30% (Standard) / 50%
- BLS = Bi-Level Switching - Using 2 Drivers (2UNV)[Ⓢ]

TELLELIGHT WIRELESS CONTROL SYSTEM

- Certified Bluetooth Mesh Components & Topology
- Standard Fixture Options: (Question? Consult Factory Rep)
- TSC3 = Internal Fixture Controller w/External Antennae Cover
— TSC3 Requires Sensor
- TSS3 = PIR Low Bay Sensor. Fixture Mounted.
- TSS12* = External PIR Low Bay Sensor. 120-277VAC Powered
— TSS12 is Junction Box Mounted

*Additional Sensor Options: [TelleLight Brochure](#)

MISC OPTIONS

- FUS = Single Fusing
- DFUS = Double Fusing
- SG = 10KA Surge Protection (ANSI spec C62.41.2)
- TP = Tamperproof Screws

BACK BOX OPTIONS

- BB1 = 12" X 2" Back Box
- BB2 = 25" X 2" Back Box
- BB3 = 36" X 2" Back Box
- BB4 = 49" X 2" Back Box

EMERGENCY / BATTERY OPTIONS [Ⓢ] [Ⓢ] [Ⓢ] [Ⓢ] [Ⓢ]

No onsite Emergency Power (AC or DC) is provided

- GTD1 = Generator Transfer Device (Signify)[Ⓢ]
- GTD2 = Generator Transfer Device (LGTD)[Ⓢ]
— Shunt Relay w/Fire Alarm Override Input

Meets California Energy Commission Title 20:
(CEC-400-2014-009-CMF) Efficiency Standards

- EL8W = Integral LED 8 Watt[Ⓢ]
- EL16W = Integral LED 16 Watt[Ⓢ]
- EL20W = Integral LED 20 Watt[Ⓢ]

- REL8W = Remote LED 8 Watt
- REL16W = Remote LED 16 Watt
- REL20W = Remote LED 20 Watt

Cold Weather Emergency Batteries:

- Operating Temp: -20°C thru 50°C
- NON-CEC Compliant
- EL10W-CW = Integral LED 10 Watt (Cold Weather)[Ⓢ]

- REL10W-CW = Remote LED 10 Watt (Cold Weather)

ACCESSORY OPTIONS (order as a separate line)

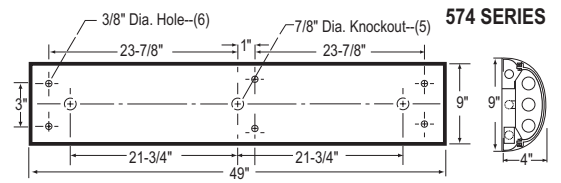
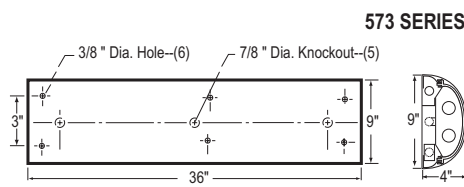
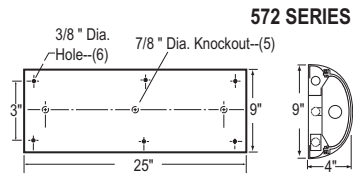
- 9002 = Tamperproof Screwdriver
- REMT = Remote Controller for Sensor Options

- [Ⓢ] Consult Factory with requests regarding wattages not shown.
- [Ⓢ] Backbox (BB) Required.
- [Ⓢ] 571 Series requires Remote Emergency Battery (REL).
- [Ⓢ] Max mounting height is 18' (18 feet).
- [Ⓢ] Max WHIP length of REL is 8 feet.
- [Ⓢ] Final selection of the Battery Pack under discretion of Factory

		SIZE / LED WATTAGE [Ⓢ]			
Fixture		571	572	573	574
Dimensions - W x H x D		13" x 9" x 4"	25½" x 9" x 4"	37" x 9" x 4"	49" x 9" x 4"
Light Emitting Diode	LED	20w / 30w	20w / 30w / 40w	20w / 40w / 50w / 60w	20w / 40w / 50w / 60w / 80w / 100w



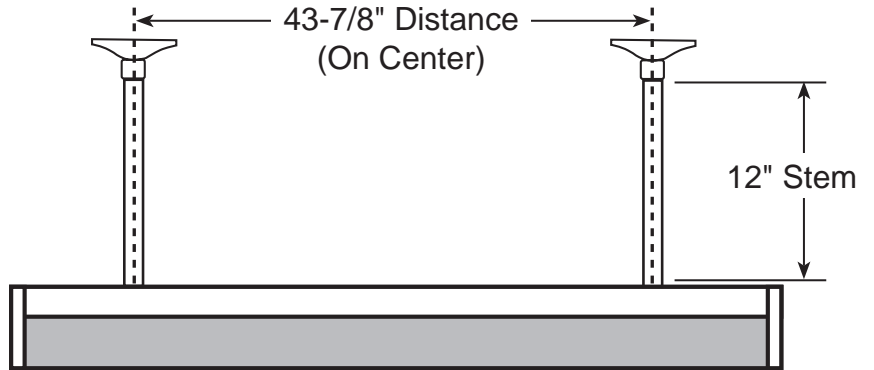
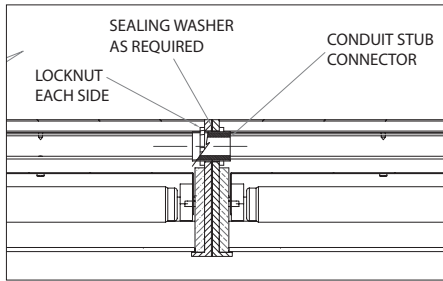
DIMENSIONS



OPTIONS



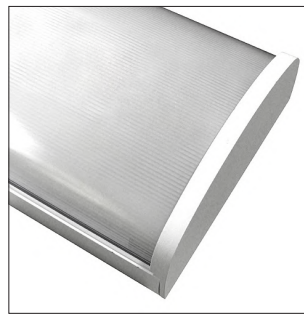
Instructions for Joining Units for Tandem Option



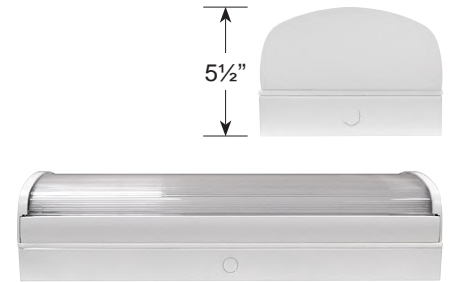
574 Shown with PEND Option



Shown with Protective Shield (PSH)



Clear Prismatic Polycarbonate Lens (CPR)

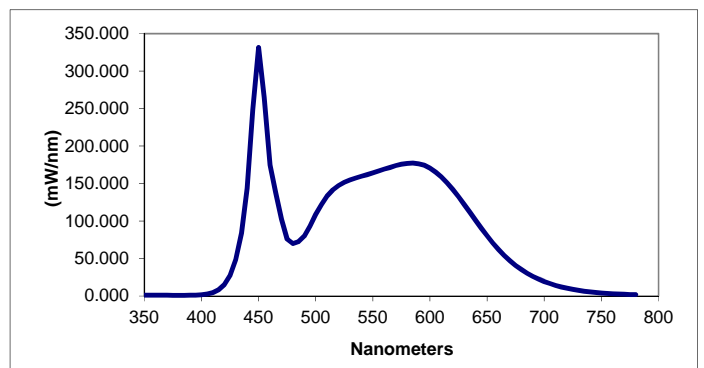
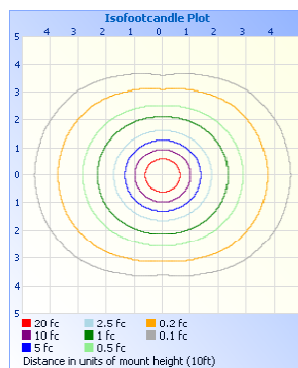
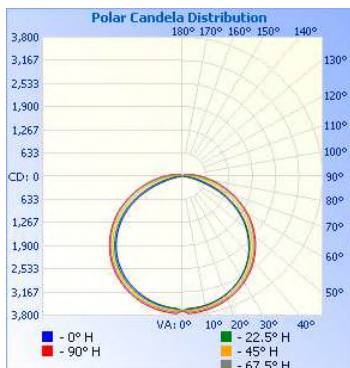


Shown with Back Box (BB)

PHOTOMETRIC DATA

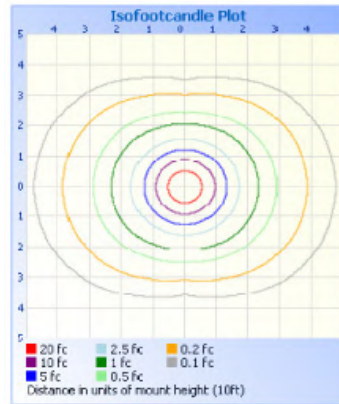
Test: 103842377CHI-002 | Catalogue #: 574-SPL-LED100-5K-EBU-WH | Test Date: 2/21/2019

Lamp Output	Lumen Efficacy	Input Voltage	Input Current	Input Wattage	Power Factor	Delta UV (Duv)	Color Temp	CRI
12,791 Lumens	130.5 LPW	120.0V	818.6mA	98.02W	0.998	0.0006	5238K	83.8

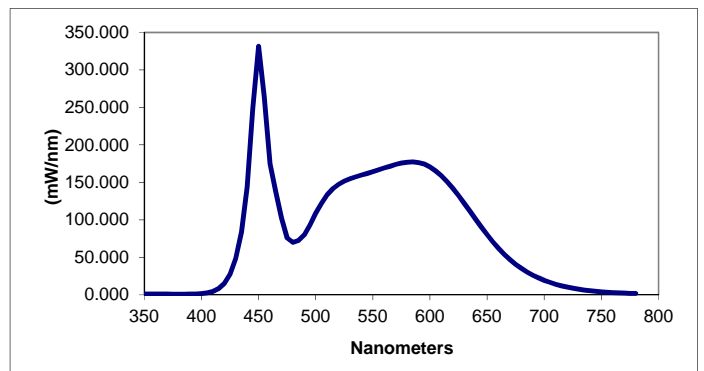
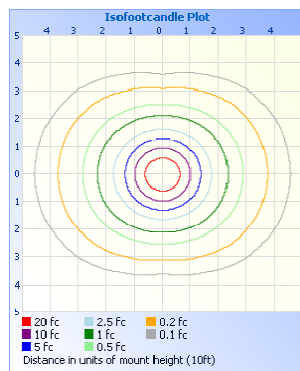
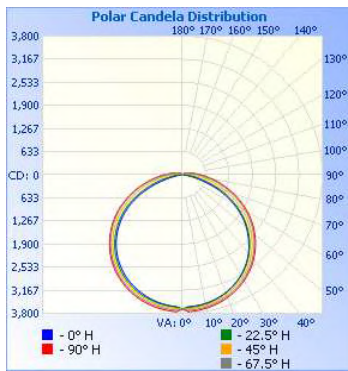


PHOTOMETRIC DATA

Test: 103876548CHI-001 Catalogue #: 574-CLR-LED100-5K-2EBU-GC-WH Test Date: 3/22/2019						
Lamp Output	Lumen Efficacy	Input Voltage	Input Current	Input Wattage	Power Factor	Color Temp
11,727.2 Lumens	119.5 LPW	120.0V	825.4mA	98.17W	0.992	5000K

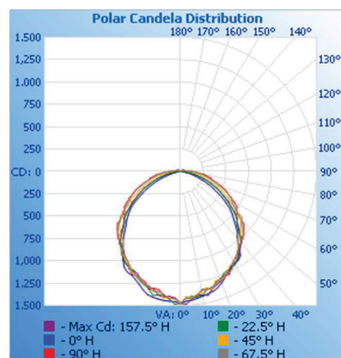


Test: 103842377CHI-002 Catalogue #: 574-SPL-LED100-5K-EBU-WH Test Date: 2/21/2019								
Lamp Output	Lumen Efficacy	Input Voltage	Input Current	Input Wattage	Power Factor	Delta UV (Duv)	Color Temp	CRI
12,791 Lumens	130.5 LPW	120.0V	818.6mA	98.02W	0.998	0.0006	5238K	83.8



Summary of Results		
Total Lumen Output	4372	
Efficacy (Lm/W)	113.9	
CRI	82.4	
CCT	4068K	
Duv	0.002	
Chromaticity Coordinates		
Chromaticity (x)	0.379	
Chromaticity (y)	0.382	
Chromaticity (u')	0.222	
Chromaticity (v')	0.503	
Zonal Lumen Summary		
Zone	Lumens	% Luminaire
0-30	1088	25.9
0-40	1779	42.4
0-60	3145	75.0
60-90	934.6	22.3
0-90	4080	97.2
90-180	116.3	2.8
0-180	4196	100.0

Test: 102063649CH-007 Catalogue #: 572-CPR-LED40-4K-EBU-BK Test Date: 6/30/2015					
Temp	Voltage	Current	Power	Power Factor	Current THD
25°C (±1°C)	120.0	322.6	38.40	0.992	9.28%



Cone of Light Tabulation			
Mounting Height (Ft)	Footcandles at Nadir	Beam Width (Ft)	
2.0	369.0	4.9	6.2
4.0	92.2	9.7	12.4
6.0	41.0	14.6	18.6
8.0	23.1	19.4	24.8
10.0	14.8	24.3	31.0

