

We reserve the right to revise the design or components of any product without notice.

# Legacy Series

*Indoor/Outdoor LED Wall Sconce  
Elegant Slim/Shallow Profile  
Round or Rectangular Fascia Shield*

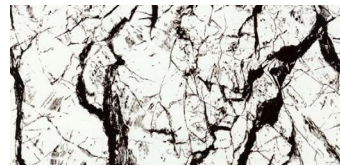
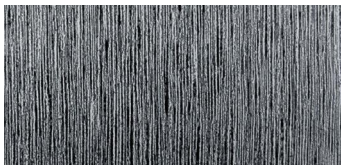
CATALOG #		TYPE
PROJECT/LOCATION		
APPROVED BY		

## SPECIFICATIONS

- BACKPLATE — 16 Ga. aluminum (AL).
- SHIELD — Solid Aluminum Round or Rectangular Fascia Shield. Additional shield styles with windows available.
- FINISH — Durable indoor/outdoor powdercoat or designer Gravura finishes. (See Chart on Page 3).
- DRIVER — Universal Voltage 120~277V Electronic Driver, 0-10V dimming is standard.
- LIGHT ENGINE — Energy Efficient LED is standard.
- MOUNTING — Wall Mount Bracket with Mounting Box.
- COMPLIANCE — Built to comply with U.S. and Canadian Safety standards. Indoor/Outdoor damp location is standard. Wet Location is optional.

## SPECIFICATIONS

- CORRIDORS
- STAIRWELLS
- CONFERENCE ROOMS
- VESTIBULES
- RESTAURANTS
- LOBBIES
- HOTELS / CONDOMINIUMS



**Legacy Rectangle  
Side Windows (SW)  
Stainless Steel (SST)**

**Legacy Round  
Silver Blue Smoke (SBS)**

**Legacy Round  
Black Vein (BVN)**

**Legacy Round  
Maple with Gloss Finish (MPL)**

<b>ORDERING GUIDE:</b>	Series	Shape	LED Wattage	Color Temp	Voltage	Finish	Options
	<input type="text"/>	<input type="text"/>	<input type="text"/>	<input type="text"/>	<input type="text"/>	<input type="text"/>	<input type="text"/>

**SERIES**  
LGC = Legacy Series (5.25"W x 14"T x 2"D)

**SHAPE**  
RND = Round Curved Shield  
REC = Rectangular Front Shield

**LED WATTAGE**  
LED11 = 11 Watt Nominal - 2000 Initial Lumens  
—120/277 Volt Electronic Driver  
—0-10V Low-Voltage LED Dimming  
(100-30% Standard)  
LED14 = 14 Watt Nominal - 1000 Initial Lumens  
—120 Volt Only, TRIAC Dimming

**LED COLOR TEMPERATURE**  
3K = ±3000K range  
4K = ±4000K range  
5K = ±5000K range

**VOLTAGE**  
EBU = Universal Voltage 120/277V Electronic Driver

**PAINTED FINISHES  
STANDARD FINISHES**  
BK = Black  
BZ = Bronze  
PNA = Painted Natural Aluminum  
SGR = Silver Gray  
WH = White

**GRAVURA GRAPHIC FINISHES**  
BVN = Black Vein  
MPL = Maple  
SBS = Silver Blue Smoke  
SST = Stainless Steel

*\*Additional Custom Finishes Listed on Pages 2-3*

**WINDOW OPTIONS**  
AW = Arc Windows  
CW = Circular Windows  
DW = Diagonal Windows  
FW = Fence Windows  
MW = Mini Windows  
RW = Rectangular Windows  
SW = Side Windows

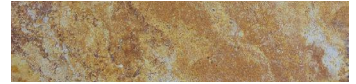
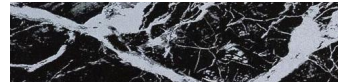
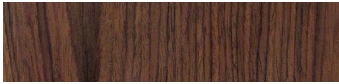
**ADDITIONAL OPTIONS**  
WET = WET Location Compliant

# Legacy Series

Galileo Slim Indoor LED Wall Sconce

Corridors/Stairwells/Conference Rooms/Vestibules/Restaurants/Lobbies/Condos

## LEGACY GRAVURA GRAPHICS SERIES

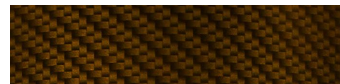
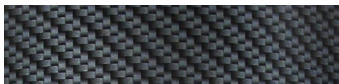
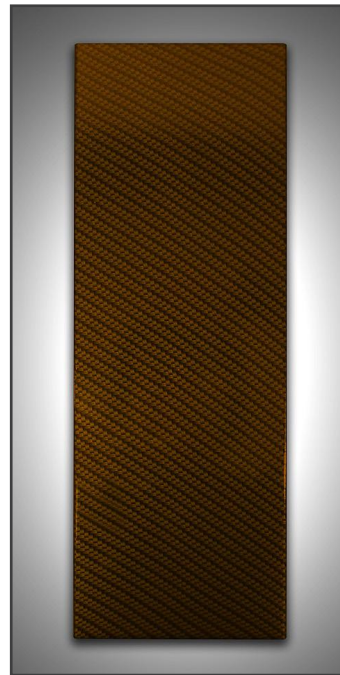


**Legacy Round**  
Walnut Grain (WNT)

**Legacy Round**  
Tan Oak Wood (TOW)

**Legacy Rectangle**  
White Vein (WVN)

**Legacy Round**  
Travertine (TVT)



**Legacy Round**  
Black Carbon Fiber (BCF)

**Legacy Rectangle**  
Gold Carbon Fiber (GCF)

**Legacy Rectangle**  
Gold Marble (GMB)

**Legacy Rectangular**  
Grey Diamond Plate (GDP)

# Legacy Series

Galileo Slim Indoor LED Wall Sconce

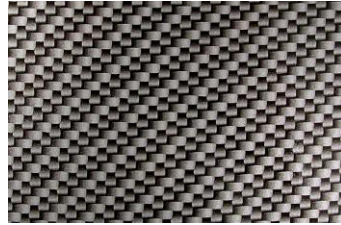
Corridors/Stairwells/Conference Rooms/Vestibules/Restaurants/Lobbies/Condos

## ADDITIONAL CUSTOM FINISH SAMPLES

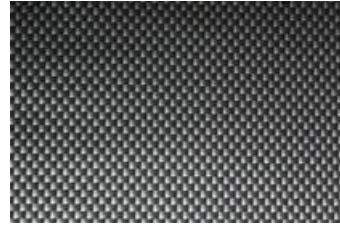
### Carbon Fiber Film Patterns



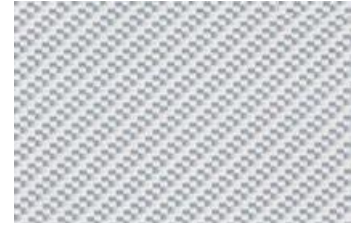
Carbon Fiber-0 (CF0)



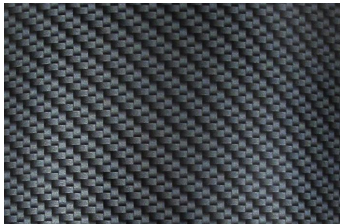
Silver Carbon Fiber (SCF)



Silver Square Carbon Fiber (SSC)



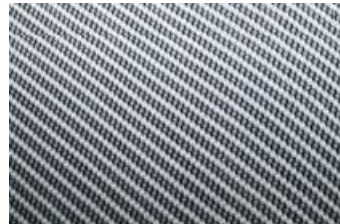
Silver Diagonal Carbon Fiber (SDC)



Black Carbon Fiber (BCF)



Blue Carbon Fiber (BLC)



True Weave Silver Carbon Fiber (SCF)

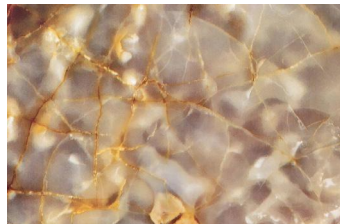


True Weave Gold Carbon Fiber (SCF)

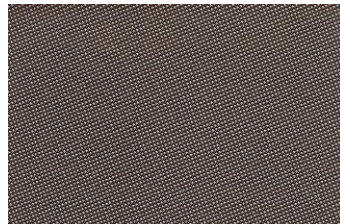
### Metal / Stone / Flames Patterns



White Gold Vein (WGV)



Muave Marble (MVM)

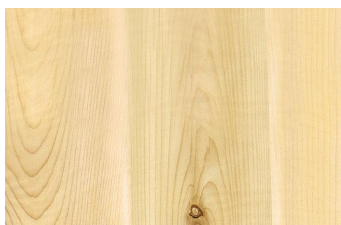


Gun Metal (GMT)



Silver Flames (SFL)

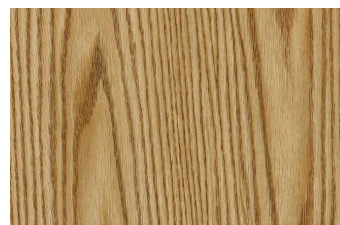
### Woodgrain Custom Finishes



Eastern White Cedar (EAW)



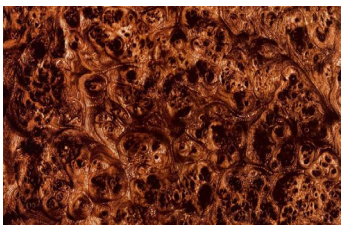
Light Oak Wood (LOW)



Dusty Walnut (DW)



Caramel Cross Grain (CAC)



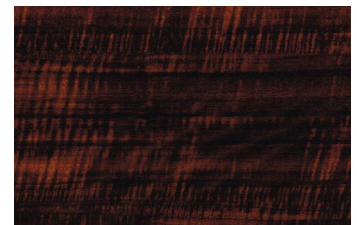
Tan Burlwood (TBW)



Toasted Rosewood (TOR)



Mocha Cross Grain (MCR)



Espresso Cross Grain (EXC)

NOTE: Product designs shown are **PATENT PENDING**. We reserve the right to revise the design or components of any product due to parts availability or change in UL standards, without assuming any obligation or liability to modify any products previously manufactured and without notice. This literature depicts a product DESIGN that is the SOLE and EXCLUSIVE PROPERTY of ECLIPSE LIGHTING, INC. — An Illinois Corporation. In compliance with U.S. COPYRIGHT and PATENT requirements, notification is hereby presented in this form that this literature, or the product it depicts, is NOT to be copied, altered or used in any manner without the express written consent of, or contrary to the best interests of, ECLIPSE LIGHTING, INC.