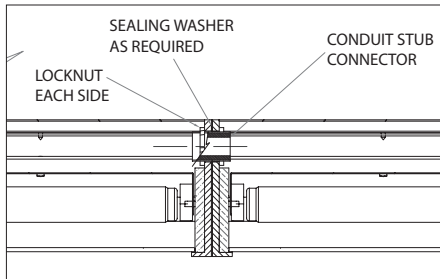


GS1/GS2/GS3/GS4 LINEAR FAMILY

VANDAL RESISTANT FIXTURE
Wall Or Ceiling Mount, Optional Tandem Mount
Fluorescent, LED



Instructions for Joining Units for Tandem Option



We reserve the right to revise the design or components of any product without notice.

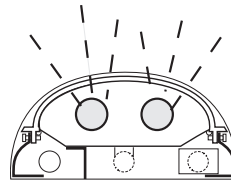
CATALOG #		TYPE
PROJECT/LOCATION		
APPROVED BY		



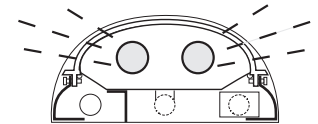
ARRA
Compliant

SPECIFICATIONS

- BALLAST** — EBU — Instant Start universal volt (120-277v) electronic.
Optional PRS — Programmable Rapid Start
- EMERGENCY** — T5, T8 — Remote or Integral
- HOUSING** — Heavy gauge extruded aluminum with cast aluminum end caps.
Includes end knockouts for surface conduit and tandem mounting.
- REFLECTOR** — 20G cold rolled steel die formed with multiple bends for maximum rigidity and unitized with all electrical components.
- FINISH** — All metal parts are 5 stage pre-treated and finished in white polyester powder coat.
- LENS** — .156" thick U.V. stabilized Opal Polycarbonate. Internal linear prisms with smooth exterior. Clear Prismatic Optional (CP)
- LENS FASTENERS** — Recessed Allen set screws to secure lens in place (2) each side (4) total
- LAMPS** — Bi-Pin Fluorescent — BY OTHERS
- UL/ULC Listed to U.S. and Canadian safety standards. Suitable For Wet Location. IP65.

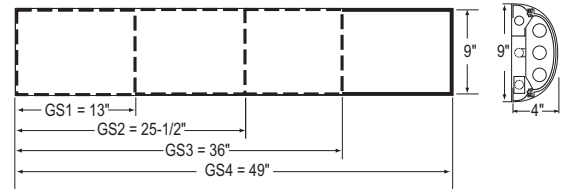


Normal Distribution



Wide Spread Distribution

LAMP TYPE/QTY/WATTAGE ¹					
Fixture		GS1	GS2	GS3	GS4
Dimensions - W x H x D		13" x 9" x 4"	25½" x 9" x 4"	37" x 9" x 4"	49" x 9" x 4"
Compact Fluorescent Twin Tube	TT	(1 or 2)13/18/26w	(2)26/32	N/A	N/A
T5 Bi-Pin Fluorescent	T5	N/A	(1 or 2)14w	(1 or 2)21w	(1, 2 or 3)28w
T5-High Output Bi-Pin Fluorescent	T5-HO	N/A	(1 or 2)24w	(1 or 2)39w	(1 or 2)54w
T8 Bi-Pin Fluorescent	T8	N/A	(1 or 2)17w	(1 or 2)25w	(1, 2 or 3)32w
Light Emitting Diode	LED	N/A	20/40/60w	20/40/60w	20/40/60w



ORDERING GUIDE:

NOTES:

- Consult Factory with requests regarding lamp sources, wattages or voltages not shown.
- Consult Factory for additional Emergency Battery options.
- 571 Series requires Remote Emergency Battery (REL)
- Max mounting height of fixture is 10' (10 feet)
- All brands do not currently offer both T5 & T8 step dimming ballasts. Unless you specify a brand, we will select it for you.

SERIES	SIZE	LAMP TYPE/QTY/WATT	COLOR TEMP	VOLTAGE/PWR FACTOR	FINISH	OPTIONS
SERIES GS1 = GS1 Series 1 Ft Linear GS2 = GS2 Series 2 Ft Linear GS3 = GS3 Series 3 Ft Linear GS4 = GS4 Series 4 Ft Linear	SIZE (TANDEM MOUNT SERIES - 574 ONLY) 8' = 8 Foot Tandem (2 or 4 Lamps) 12' = 12 Foot Tandem (3 or 6 Lamps)	LAMP TYPE/QUANTITY/WATTAGE Refer to Above Chart	COLOR TEMP (LED ONLY) 3K = ±3000K range 4K = ±4000K range 5K = ±5000K range 6K = ±6000K range	VOLTAGE/ POWER FACTOR 347 = 347 Volts EBU = High Temp Universal Volt (120-277v) EB = Electronic Ballast 2EB = Two Electronic Ballasts LPF = Low Power Factor Ballast	FINISH WH = White Finish STANDARD BK = Black Finish BZ = Bronze Finish	EMERGENCY OPTIONS^{2,4} EL1 = Integral Emergency Battery: T8, 1 Lamp, 600 Lms EL7 = Integral Emergency Battery: T8, 1-2 Lamp, 1400 Lms EL9 = Integral Emergency Battery (574 Only) T8, 1-2 Lamp, Up to 1400 Lms EL31 = Integral Emergency Battery: T5/T5HO, 1 Lamp, 700 Lms EL32 = Integral Emergency Battery: T5/T5HO, 1 Lamp, 1325 Lms EL49 = Integral Emergency Battery Cold Weather T8, 1 Lamp, 1200 Lms REL1 = Remote Emergency Battery: see EL1 REL7 = Remote Emergency Battery: see EL7 REL9 = Remote Emergency Battery: see EL9
LIGHT DISTRIBUTION ND = Normal Distribution WS = Wide Spread Distribution	LAMP TYPE/QUANTITY/WATTAGE Refer to Above Chart	COLOR TEMP (LED ONLY) 3K = ±3000K range 4K = ±4000K range 5K = ±5000K range 6K = ±6000K range	FINISH WH = White Finish STANDARD BK = Black Finish BZ = Bronze Finish	EMERGENCY OPTIONS^{2,4} EL1 = Integral Emergency Battery: T8, 1 Lamp, 600 Lms EL7 = Integral Emergency Battery: T8, 1-2 Lamp, 1400 Lms EL9 = Integral Emergency Battery (574 Only) T8, 1-2 Lamp, Up to 1400 Lms EL31 = Integral Emergency Battery: T5/T5HO, 1 Lamp, 700 Lms EL32 = Integral Emergency Battery: T5/T5HO, 1 Lamp, 1325 Lms EL49 = Integral Emergency Battery Cold Weather T8, 1 Lamp, 1200 Lms REL1 = Remote Emergency Battery: see EL1 REL7 = Remote Emergency Battery: see EL7 REL9 = Remote Emergency Battery: see EL9	OPTIONS FUS = Single Fusing DFUS = Double Fusing D1 = Linear Fluorescent Dimming Ballast D2 = Step Dimming Ballast for T8 Lamp ⁵ D3 = Compact Fluorescent Dimming Ballast D11 = Step Dimming Ballast for T5 Lamp ⁵ PEND = Pendant Mounting Kit, 1/2" conduit entrance hole. (2) Stem - 12" Stem Included; Custom length as needed. Damp Location. PRS = Programmable Rapid Start Ballast TDM = Tandem Mount (GS4 Only, Specify Length) — Includes Mounting Hardware 8 Ft Tandem (2 or 4 Lamps) 12 Ft Tandem (3 or 6 Lamps)	LED OPTIONS D7 = 0-10V low-voltage LED Dimming (100-30% Standard, Consult Factory for Other) D8 = LED Dimming: Forward Phase (Triac) MSE = Motion Sensor External for LED Specify Finish: White (WH) or Bronze (BZ) MSI = Motion Sensor Integral for LED ^{2b} SG = 10KA Surge Protection for LED fixtures (meets ANSI spec C62.41.2)

