

## GRAVURA GRAPHIC FINISHES FOR FIXTURES

ASTRO-ADA • BERMUDA-2 W/SHIELD • GALILEO FLATBAND • GLASGOW • LEGACY  
MINI R9 • MILAN • VIENNA • SONIC • TITAN 2 • TROY PENDANT

### Metal Finishes



Grey Diamond Plate (GDP)



Diamond Plate (DPL)



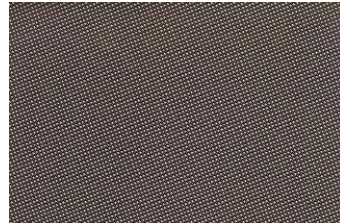
Stainless Steel (SST)



Handbrushed Swirl (HBS)

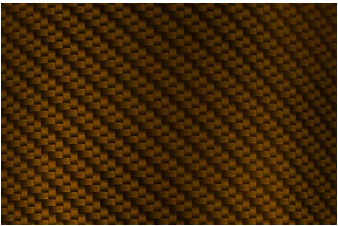


Handbrushed Aluminum (HBA)

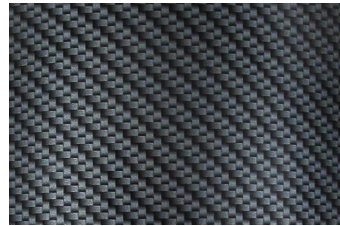


Gun Metal (GMT)

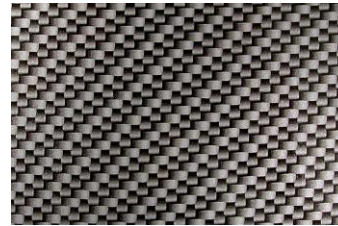
### Carbon Fiber Finishes



Gold Carbon Fiber (GCF)



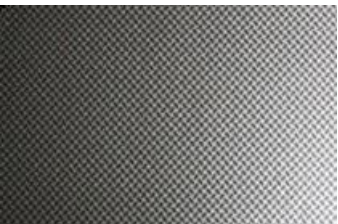
Black Carbon Fiber (BCF)



Silver Carbon Fiber (SCF)



Carbon Fiber-0 (CF0)



Carbon Fiber-1 (CF1)



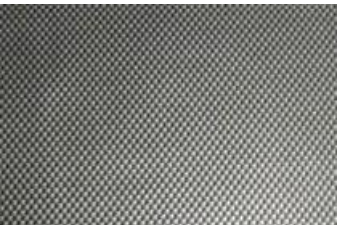
Blue Carbon Fiber (BLC)



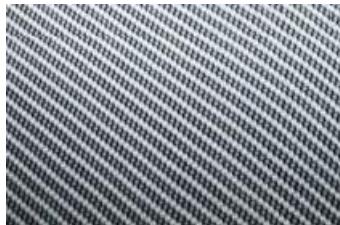
Silver Diagonal  
Carbon Fiber (SDC)



Silver Square Carbon Fiber  
(SSC)



Small Square Carbon Fiber  
(SQF)



True Weave  
Silver Carbon Fiber (TWS)



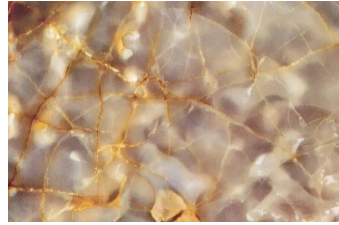
True Weave  
Gold Carbon Fiber (TWG)

# Cravura Graphics Chart

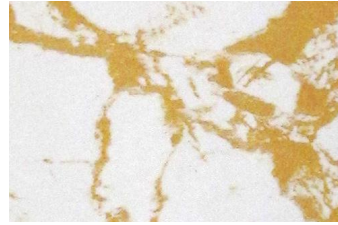
## Stone Finishes



Gold Marble (GMB)



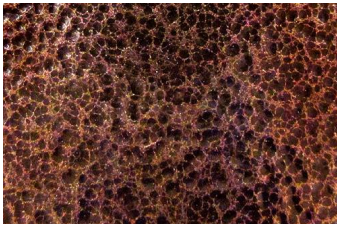
Muave Marble (MVM)



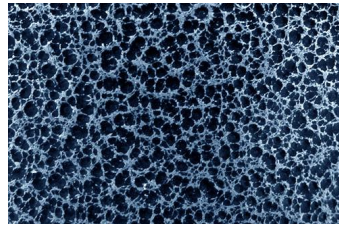
White Gold Vein (WGV)



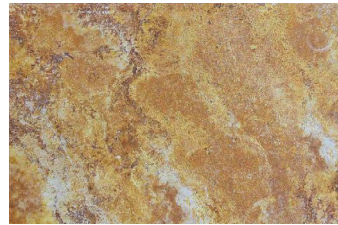
White Vein (WVN)



Copper Hybrid (CHB)

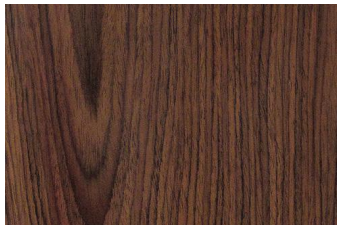


Silver Hybrid (SHB)



Travertine (TVT)

## Woodgrain Finishes



Walnut Grain (WNT)



Tan Oak Wood (TOW)



Maple with Gloss Finish (MPL)



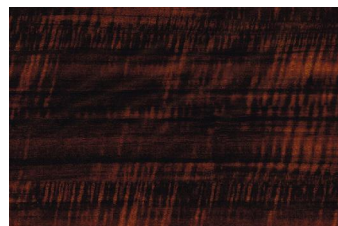
Light Oak Wood (LOW)



Dusty Walnut (DW)



Caramel Cross Grain (CAC)



Espresso Cross Grain (EXC)



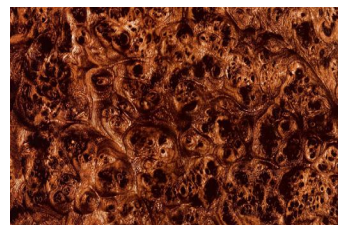
Mocha Cross Grain (MCR)



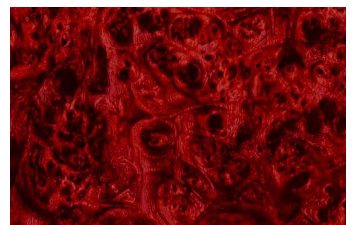
Eastern White Cedar (EAW)



Toasted Rosewood (TOR)



Tan Burlwood (TBW)



Red Burlwood (RBW)

# Cravura Graphics Chart

---

## Camouflage Finishes



Orange Camo Vista (OCV)



Red Camo Vista (RCV)



Pink Swirl (PSW)

---

## Smoke/Flame Finishes



Silver Blue Smoke (SBS)



Silver Flames (SFL)