

# Turin 2

## FULL CUTOFF WALL SCONCE

### Dark Sky Compliant

### Indoor / Outdoor



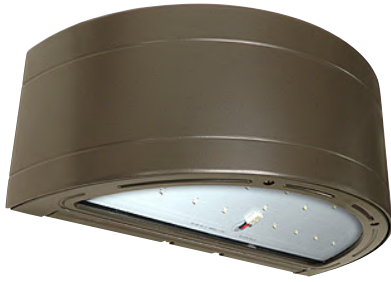
We reserve the right to revise the design or components of any product without notice.

CATALOG #		TYPE
PROJECT/LOCATION		
APPROVED BY		

### SPECIFICATIONS

- DRIVER — Universal Voltage 120/277v Electronic Driver is standard for LED.
- HOUSING — Die cast aluminum with Full Cutoff Front Frame.
- LENS — Tempered Clear Flat Glass Lens.
- FINISH — Textured Bronze Powdercoat Finish over a Chrome Conversion Coating layer. Additional finishes available. Custom Color requires 5pc Minimum Order Quantity.
- LIGHT ENGINE — Energy Efficient Light Emitting Diode (LED). Downlight Only or Uplight/ Downlight Combination.
- EMERGENCY — Integral Emergency Battery.
- LENS FASTENERS — Stainless steel tamperproof screws – (2) to secure lens in place.
- HARDWARE — Nickel-Plate Stainless Steel Hardware.
- MOUNTING — Mounts to standard 4" recessed outlet box. Features wall mounting bracket with built-in level.
- OPERATING TEMPERATURE — -40°F to 104°F.
- COMPLIANCE — Built to comply with U.S. and Canadian safety standards. ANSI/UL 1598, 8750, Suitable for wet locations. IP65 Rated. Complies with Buy American Act.
- WARRANTY — 5-Year Standard Warranty.

### MODELS

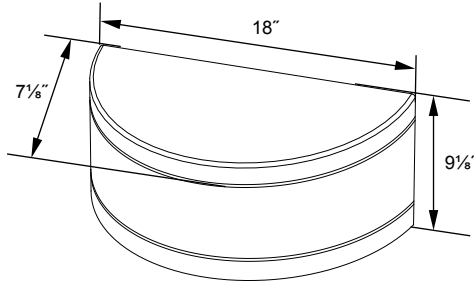


Downlight Only

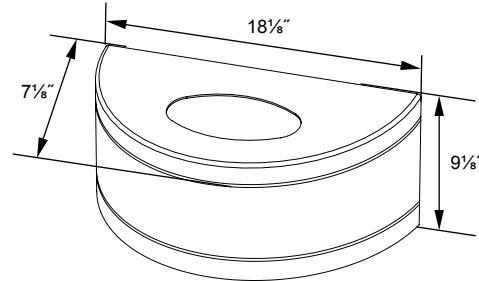


Uplight / Downlight

### DIMENSIONS



Downlight Only



Uplight / Downlight

Series	LED Wattage	Color Temp	Voltage	Finish	Options
<input type="text"/>	<input type="text"/>	<input type="text"/>	<input type="text"/>	<input type="text"/>	<input type="text"/>

#### SERIES

TU2 = Turin 2 Series

#### MODEL TYPE/LED WATTAGE/OPTICS

##### Turin 2 Downlight Only (Dark Sky Compliant)

LED47 = 47 Watt LED — 250W HID Equivalent  
— Type III Distribution

##### Turin 2 Uplight/Downlight

UP12/DN34 = 12 Watt Uplight / 34 Watt Downlight  
— 250W HID Equivalent  
— Not compatible with 480V Voltage  
— Type V Distribution

\*See 2nd Page for Photometry / Lumen Data

#### LED COLOR TEMPERATURE

4K = ±4000K range  
5K = ±5000K range

#### VOLTAGE

347 = 347 Volts (LED47 / UP12/DN34)  
480 = 480 Volts (LED47 ONLY)  
EBU = Universal Volt (120-277v) Electronic Driver

#### FINISH

BK = Black  
BZ = Bronze — STANDARD  
CC = Custom Color (Consult Factory)  
— 5pc Minimum Order Quantity  
PNA = Painted Natural Aluminum  
WH = White

#### OPTIONS

9328 = Universal Photocell – 120/277V  
FUS = Single Fusing  
DFUS = Double Fusing  
D7 = 0-10V low-voltage dimming (100-10%) — STANDARD  
SG = 10KV Surge Protection  
— Meets ANSI spec C62.41.2

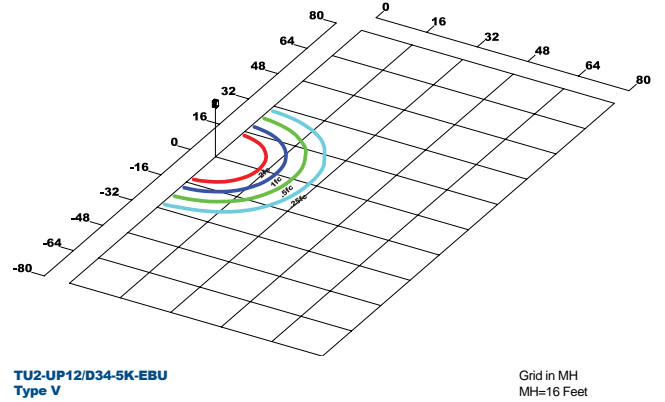
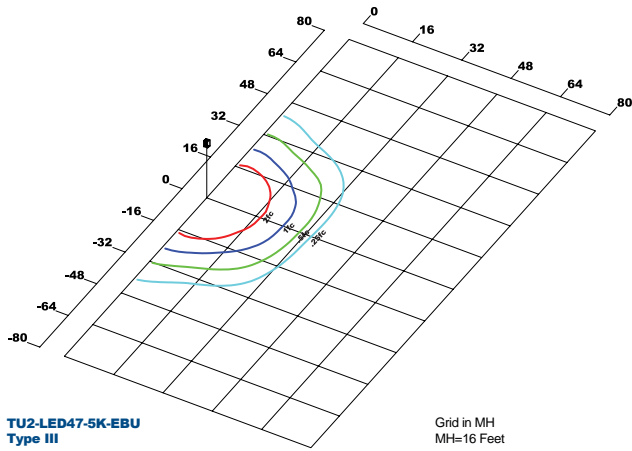
#### EMERGENCY BATTERY OPTIONS

**No onsite Emergency Power (AC or DC) is provided**  
**Specify Fixture Voltage: 120V or 277V Power Feed**  
**A=120V or B=277V**

#### Meets California Energy Commission Title 20:

(CEC-400-2014-009-CMF) Efficiency Standards  
EL4W=Integral LED 4 Watt

PHOTOMETRIC DATA



PHOTOMETRIC PERFORMANCE

MODEL: TU2-LED47-5K-EBU				5000K / 80 CRI					4000K / 80 CRI				
Led Wattage	Drive Current (mA)	Input Watts	Optics	Lumens	LPW	B	U	G	Lumens	LPW	B	U	G
47 Watt LED	525	52	Type III	4,921	95	1	1	1	4,503	87	1	1	1

MODEL: TU2-UP12/DN34-5K-EBU				5000K / 80 CRI					4000K / 80 CRI				
Led Wattage	Drive Current (mA)	Input Watts	Optics	Lumens	LPW	B	U	G	Lumens	LPW	B	U	G
12 Watt Uplight 34 Watt Downlight	525	52	Type V	5,922	114	2	5	1	5,419	104	2	5	0

PROJECTED LUMEN MAINTENANCE

MODEL: TU2-LED47-5K-EBU   DATA SHOWN FOR 5000 CCT						
TM-21-11 <sup>1</sup>	Input Watts	Initial	25,000 Hrs <sup>2</sup>	50,000 Hrs	100,000 Hrs	Calculated L70@ 25°C
L70 Lumen Maintenance @ 25°C / 77°F	52	1.00	0.98	0.96	0.91	347,000
L70 Lumen Maintenance @ 50°C / 122°F	52	1.00	0.96	0.91	0.82	168,000
L70 Lumen Maintenance @ 40°C / 104°F	52	1.00	0.97	0.94	0.88	160,000

MODEL: TU2-UP12/DN34-5K-EBU   DATA SHOWN FOR 5000 CCT						
TM-21-11 <sup>1</sup>	Input Watts	Initial	25,000 Hrs <sup>2</sup>	50,000 Hrs	100,000 Hrs	Calculated L70@ 25°C
L70 Lumen Maintenance @ 25°C / 77°F	52	1.00	0.98	0.96	0.93	410,000
L70 Lumen Maintenance @ 50°C / 122°F	52	1.00	0.97	0.94	0.87	235,000
L70 Lumen Maintenance @ 40°C / 104°F	52	1.00	0.97	0.95	0.89	187,000

NOTES:

- 1** Projected per IESNA TM-21-11. Data references the extrapolated performance projections for the 525mA base model in a 25°C ambient, based on 10,000 hours of LED testing per IESNA LM-80-08.
- 2** Compare to MH box suggested Light Loss Factor (LLF) to be used when comparing to Metal Halide (MH) systems.