

Troy

CYLINDER SURFACE FAMILY

Wall Arm or Ceiling Mount

Outdoor / Indoor Applications

We reserve the right to revise the design or components of any product without notice.

CATALOG #		TYPE
PROJECT/LOCATION		
APPROVED BY		

SPECIFICATIONS

- DRIVER — Universal Voltage (120~277V) with 0-10V dimming is standard. 347 Volt optional for White LED only.
- HOUSING — Heavy gauge aluminum cylinder.
- FINISH — Powder Coat Finish applied over pre-treated surfaces.
- LIGHT ENGINE — Energy Efficient LED Downlight (DN) is standard. For Wall Mount, LED Uplight (UP) is Optional.
- LENS — .156" Clear Tempered Glass (85) is Standard.
- MOUNTING — Surface or Wall Arm Mount.
- REFLECTOR — .032 Specular Aluminum Standard.
- COMPLIANCE — Built to comply with U.S. and Canadian Safety Standards. **Made in USA / Buy America Compliant / Buy American Act.** Ceiling surface and wall mount are suitable for Wet Locations.

Ceiling Mount (CM)



Wall Mount (WM)



ORDERING INFORMATION

Series	Size	Mounting	Wattage	CCT or Color	Voltage	Illumination	Finish	Options
ORDERING GUIDE:								

SERIES

TY = Troy Series

SIZE

- 10 = 10" Tall (7" dia.)
- 16 = 16½" Tall (7" dia.)
- 20 = 20" Tall (7" dia.)
- 26 = 26" Tall (7" dia.)

MOUNTING

- CM = Ceiling Mount
- WM = Wall Mount

DOWNLIGHT WATTAGE

- LED10 = 10W LED
- LED15 = 15W LED
- LED25 = 25W LED (20" and 26" CM Mount Only)

UPLIGHT WATTAGE (16"-26" WM Mount Only)

- LED10 = 10W LED
- LED15 = 15W LED

VOLTAGE

- 347 = 347 Volts (Consult Factory)
- UNV = Universal Voltage (120/277V) Driver

CONTROL SCENARIO

- 1U = Uplight Only
- 1D = Downlight Only
- 1UD = Uplight / Downlight - Single Control
— Available for 16"-26" WM Only
- 2UD = Uplight / Downlight - Separate Control
— Available for 16"-26" WM Only

STANDARD FINISH

- BK = Black
- BZ = Bronze
- PNA = Painted Natural Aluminum
- WH = White

PREMIUM UPCHARGE FINISH

- CC = Custom Color (Visit www.ralcolor.com)
— Provide RAL# or Make-to-Match Color Chip

MOUNTING ARM (WM Mount Only)

- ARM3 = 3" Length (10" & 16" Only)
- ARM6 = 6" Length (20" & 26" Only)

BEAM SPREAD OPTIONS (Downlight Only)

Note A: Fixture will not be provided with lens (Open End) and is not available with Static Color Inserts.

Note B: See Page 3 for Images/Examples

- S = Spot — 16°
- M = Medium — 28°
- W = Wide — 58°
- XW = X-Wide — 74°
- DL = Diffusion Lens
— Includes Glare / Dust Control

DIMMING OPTIONS

MANUAL CONTROL (Wall Switch or Control System)

Note: 0-10V 100%-30% is Standard

- D7A = 0-10VDC LED Dimming Driver (100-10%)
- D7B = 0-10VDC LED Dimming Driver (100-1%)

BACKBOX OPTIONS²

Note: Required for EM Options.

- BBCM = Backbox Ceiling Mount 10.625" Sq. x 1.78"D⁴
- BBWM = Backbox Wall Mount (4.75"W x 8.75"H x 2.875"D)

EMERGENCY BATTERY OPTIONS⁵

Meets California Energy Commission Title 20:
(CEC-400-2014-009-CMF) Efficiency Standards

- EL4W = Integral LED 4 Watt ² ⁵²
- EL8W = Integral LED 8 Watt ² ⁵²

- REL4W = Remote LED 4 Watt
- REL8W = Remote LED 8 Watt
- REL16W = Remote LED 16 Watt

Cold Weather Emergency Batteries:

NON-CEC Compliant

- REL10W-CW = Remote LED 10 Watt - Cold Weather

NOTES:

- ² Integral EL requires Backbox.
- ⁴ BBCM is also required for Surface Conduit applications.
- ⁵² Emergency Battery option will only illuminate the downlight portion of the fixture when active.
- ⁵⁵ Final selection of the Battery Pack under discretion of Factory

CHOOSE ONE:

LED COLOR TEMPERATURE (CCT) or

- 3K = ±3000K range LED
- 35K = ±3500K range LED
- 4K = ±4000K range LED
- 5K = ±5000K range LED

STATIC COLOR (4K with Color Insert)

- ACI = Amber Color Insert
- BCI = Blue Color Insert
- GCI = Green Color Insert
- RCI = Red Color Insert

CM (CEILING MOUNT) AVAILABLE WATTAGES

SERIES / SIZE	UPLIGHT WATTAGES	DOWNLIGHT WATTAGES
TY-10-CM	N/A	10W / 15W
TY-16-CM	N/A	10W / 15W
TY-20-CM	N/A	10W / 15W / 25W
TY-26-CM	N/A	10W / 15W / 25W

WM (WALL MOUNT) AVAILABLE WATTAGES

SERIES / SIZE	UPLIGHT WATTAGES	DOWNLIGHT WATTAGES
TY-10-WM	N/A	10W / 15W
TY-16-WM	10W / 15W	10W / 15W
TY-20-WM	10W / 15W	10W / 15W
TY-26-WM	10W / 15W	10W / 15W

Troy

CYLINDER SURFACE FAMILY

Wall Arm or Ceiling Mount

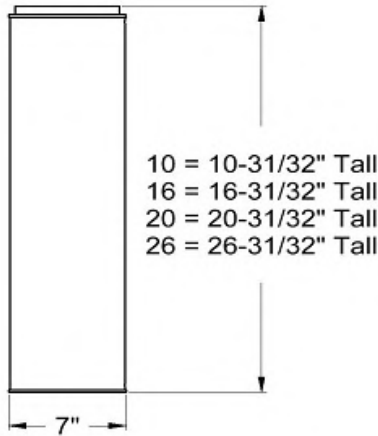
Outdoor / Indoor Applications

We reserve the right to revise the design or components of any product without notice.

CATALOG #		TYPE
PROJECT/LOCATION		
APPROVED BY		

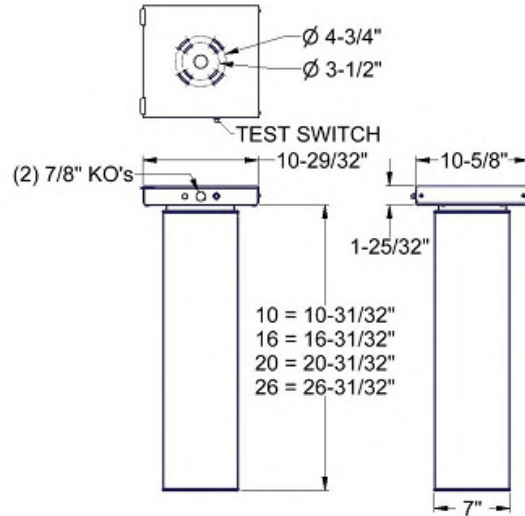
DIMENSIONS

CEILING MOUNT



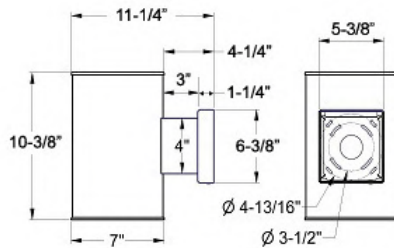
CEILING MOUNT w/ BBCM

For Integral EL or Surface Conduit Installations

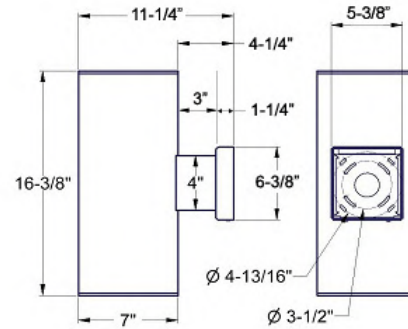


STANDARD WALL MOUNT (NON-EMERGENCY)

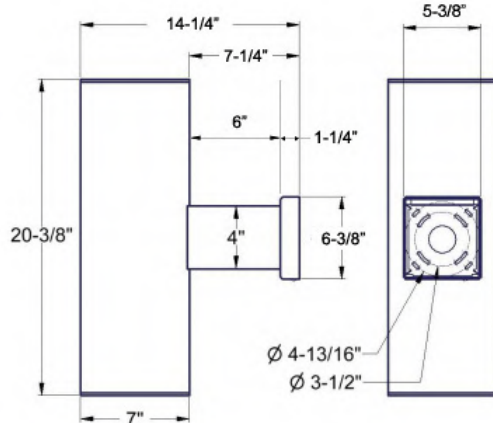
10" Fixture



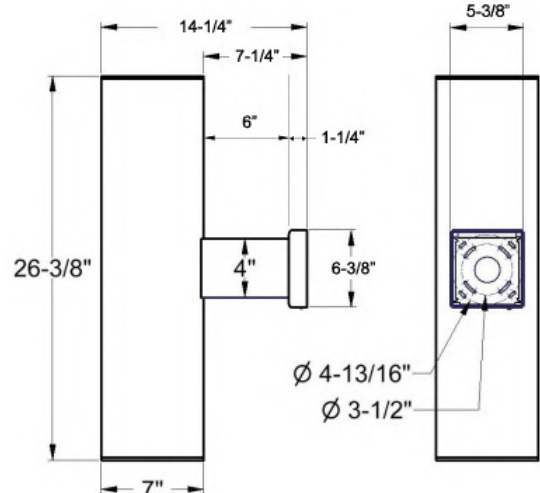
16" Fixture



20" Fixture



26" Fixture



Troy

CYLINDER SURFACE FAMILY

Wall Arm or Ceiling Mount

Outdoor / Indoor Applications

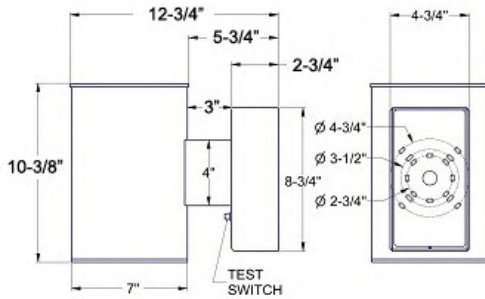
We reserve the right to revise the design or components of any product without notice.

CATALOG #		TYPE
PROJECT/LOCATION		
APPROVED BY		

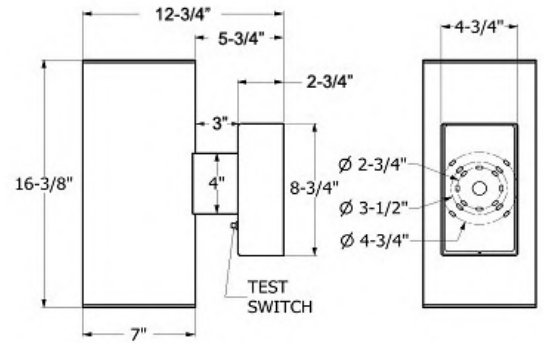
DIMENSIONS (cont.)

WALL MOUNT with BBWM (for applications that include Integral Emergency Battery)

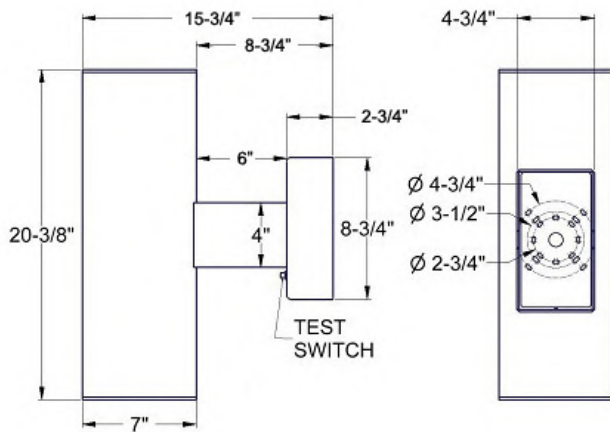
10" Fixture



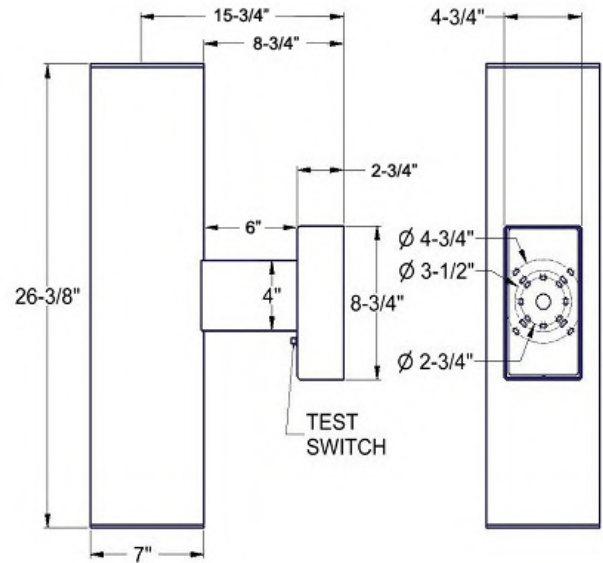
16" Fixture



20" Fixture



26" Fixture



Troy

CYLINDER SURFACE FAMILY

Wall Arm or Ceiling Mount

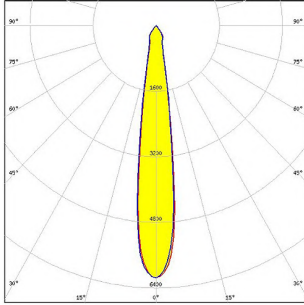
Outdoor / Indoor Applications

We reserve the right to revise the design or components of any product without notice.

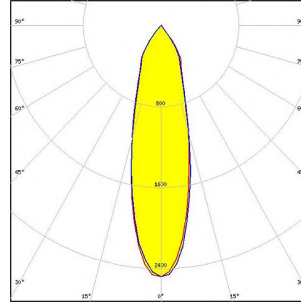
CATALOG #		TYPE
PROJECT/LOCATION		
APPROVED BY		

OPTIONAL BEAM SPREADS

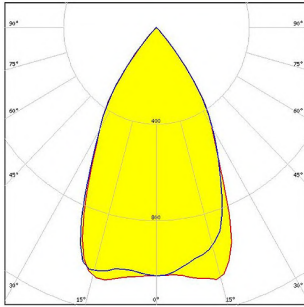
NOTE: Depiction of lumen distribution as depicted is subject to change minimally based upon selection of LED.



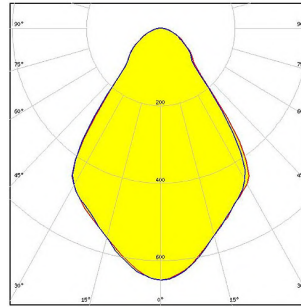
16° Spot (Wattage / Lumens)				
Watts	3000K	3500K	4000K	5000K
5W	649	693	702	711
10W	1491	1514	1533	1533
15W	2052	2084	2110	2136
25W	3229	3279	3321	3361



28° Medium (Wattage / Lumens)				
Watts	3000K	3500K	4000K	5000K
5W	649	693	702	711
10W	1491	1514	1533	1533
15W	2052	2084	2110	2136
25W	3229	3279	3321	3361



58° Wide (Wattage / Lumens)				
Watts	3000K	3500K	4000K	5000K
5W	642	686	694	703
10W	1475	1498	1517	1536
15W	2030	2061	2087	2113
25W	3195	3243	3285	3325



74° Extra Wide (Wattage / Lumens)				
Watts	3000K	3500K	4000K	5000K
5W	656	701	709	719
10W	1507	1531	1550	1570
15W	2074	2106	2132	2159
25W	3264	3314	3356	3398