

TL103

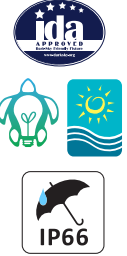
Cylindrical Dark Sky Luminaire Beachfront / Turtle Safe Lighting

We reserve the right to revise the design or components of any product without notice.

CATALOG #		TYPE
PROJECT/LOCATION		
APPROVED BY		

SPECIFICATIONS

- DRIVER — Universal 120/277 volt electronic driver with 0-10V dimming.
- FINISH — Oven baked polyester powder coat.
- HOUSING — Extruded round aluminum housing with built-in heat sink.
- LAMP — LED Cob, Amber 590nm Color Temp (Turtle Safe).
- LENS — Tempered Glass Lens.
- MOUNTING — Wall mount over a 4" recessed outlet box.
- OPERATING TEMP — -40°C to 50°C / -40°F to 122°F.
- OPTICS — Wide (100°), Medium (70°), or Narrow (30°) Distribution.
- COMPLIANCE — Built to comply with U.S. and Canadian Safety Standards.
IP66 Rated, Suitable for Wet Locations. ANSI/UL 1598, 8750. Beachfront and Turtle Safe Lighting.
- WARRANTY — 5-Year Limited Warranty.



ORDERING INFORMATION

Series	Distribution	Wattage	CCT	Voltage	Finish	Options
ORDERING GUIDE:						

SERIES

TL103 = TL103 Series

DISTRIBUTION TYPE / REFLECTOR

30D = 30° - Narrow Reflector
70D = 70° - Medium Reflector
100D = 100° - Wide Reflector

LED WATTAGE

LED20 = LED 20 Watt

COLOR TEMPERATURE (CCT)

AMB = Amber 590nm Color Temp

VOLTAGE

UNV = High Temp Universal Volt (120-277V)

FINISH

BK = Black
BZ = Bronze

MISC OPTIONS

FUS = Single Fusing
VS = Visor

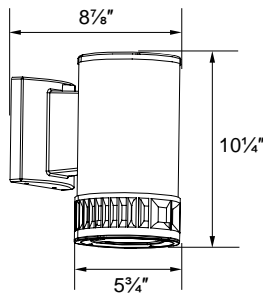
PHOTOCELL OPTIONS

9328 = Photocell Button (120/277V)

EMERGENCY BATTERY OPTIONS

EL = Emergency Battery LED - 90min

DIMENSIONS



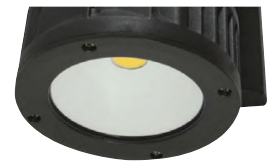
DISTRIBUTION TYPE / REFLECTORS



30° - Narrow



70° - Medium



100° - Wide

OPTIONS



Visor (VS)



Photocell

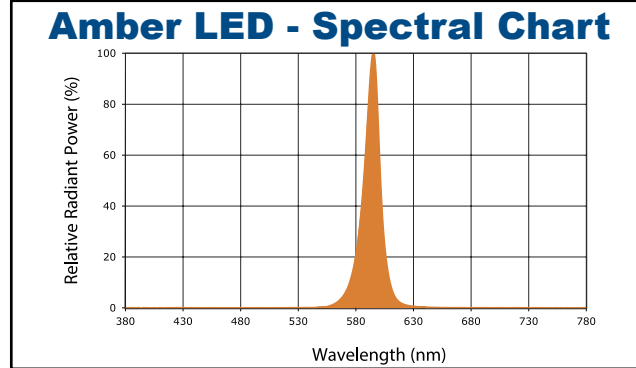
TL103

Cylindrical Dark Sky Luminaire Beachfront / Turtle Safe Lighting

We reserve the right to revise the design or components of any product without notice.

CATALOG #		TYPE
PROJECT/LOCATION		
APPROVED BY		

SPECTRAL CHART



PHOTOMETRIC PERFORMANCE

Led Wattage	Drive Current (mA)	Input Watts	Distribution	Beam Type
LED COB 20W	525 mA	21 Watts	30°	Narrow
			70°	Medium
			100°	Wide

PROJECTED LUMEN MAINTENANCE

DATA SHOWN FOR AMBER LED						
TM-21-11 ¹	Input Watts	Initial	25,000 Hrs ²	50,000 Hrs	100,000 Hrs	Calculated L70@ 25°C
L70 Lumen Maintenance @ 25°C / 77°F	21	1.00	0.92	0.83	0.66	89,000
L70 Lumen Maintenance @ 50°C / 122°F	21	1.00	0.90	0.81	0.62	78,000
L70 Lumen Maintenance @ 40°C / 104°F	21	1.00	0.93	0.86	0.72	72,000

NOTES:

- 1 Projected per IESNA TM-21. Data references the extrapolated performance projections for the 525mA base model in a 25°C ambient, based on 10,000 hours of LED testing per IESNA LM-80-08.
- 2 Indicates suggested Light Loss Factor (LLF) to be used when comparing to Metal Halide (MH) systems.