

# Munich 3

**Vandal Resistant Full Cutoff Wall Pack**

**Selectable LED Wattage / CCT**

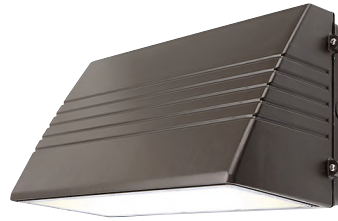
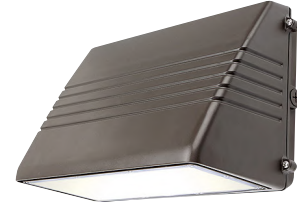
**Dark Sky Compliant / Wet Location**

We reserve the right to revise the design or components of any product without notice.

CATALOG #		TYPE
PROJECT/LOCATION		
APPROVED BY		

## SPECIFICATIONS

- APPLICATIONS — Security, Pathway, Perimeter, Building Entryways, Walkways.
- DRIVER — Universal Volt 120/277V electronic driver with 0-10V dimming (100-10%).
- HOUSING — Die-cast aluminum, corrosion-resistant housing which conducts heat for optimal thermal management.
- FINISH — Weatherproof polyester powder coated finish.
- LENS — Tempered UV Coated Lens which provides uniform distribution and glare control.
- LIGHT ENGINE — Energy efficient LED - Selectable Wattage / CCT.
- PROJECTED LIFESPAN — 50,000hrs based on IES LM-80 / TM-21.
- OPERATING TEMPERATURE — -40°C to 45°C / -40°F to 113°F.
- MOUNTING — Wall mounts to J-BOX
- PHOTOCELL — Optional 120~277V Photocell is available.
- COMPLIANCE — Built to comply with U.S. and Canadian Safety Standards. UL/cUL Listed. Suitable for Wet Locations.
- WARRANTY — 5-year Limited Warranty.



## ORDERING INFO

Series	Size	Wattage	CCT	Voltage	Finish	Options

### SERIES

MU3 = Munich 3 Series

### SIZE

M = Medium: 14.2" Width x 9.2" Height x 8.7" Depth  
L = Large: 18.1" Width x 9.75" Height x 9.5" Depth

### WATTAGE

Size Medium Wattage:

SLED-L = \*Selectable LED Wattage- Low: 70W | 56W | 42W | 28W  
SLED-M = \*Selectable LED Wattage- Medium: 125W | 100W | 75W | 50W

Size Large Wattage:

SLED-H = \*Selectable LED Wattage- High: 135W | 108W | 81W | 54W

### COLOR TEMPERATURE (CCT)

SCCT = \*Selectable CCT: 3000K | 4000K | 5000K

### DRIVER VOLTAGE

UNV = Universal Volt (120-277V) Driver

### STANDARD FINISH

BK = Black Finish  
BZ = Bronze Finish  
WH = White Finish

### PHOTOCELL OPTIONS

PHOT = Photocell (120-277V)

### SENSOR OPTIONS

PIR = PIR Sensor (120-277V)

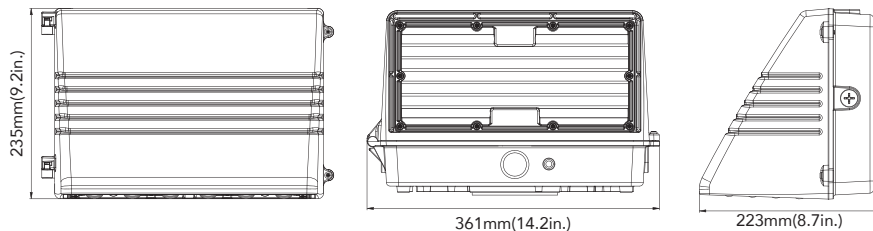
### EMERGENCY BATTERY OPTIONS

EL8W = 8 Watt Integral Emergency Battery  
— 900 Lumen | 90min Battery Time  
— Compatible with SLED-L Only

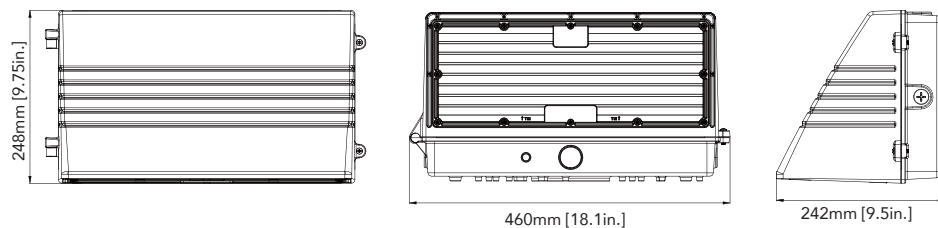
\*Note: Fixtures will ship from factory at lowest wattage and warmest CCT. It is the installer's responsibility to set the fixture at the desired wattage and CCT for their project.

## DIMENSIONS

### MEDIUM



### LARGE



# Munich 3

**Vandal Resistant Full Cutoff Wall Pack**

**Selectable LED Wattage / CCT**

**Dark Sky Compliant / Wet Location**

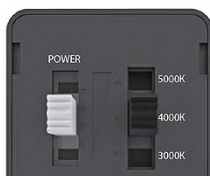
We reserve the right to revise the design or components of any product without notice.

CATALOG #		TYPE
PROJECT/LOCATION		
APPROVED BY		

## FEATURES



**Selectable Wattage/CCT Controller**



**Selectable Wattage**  
100% | 80% | 60% | 40%  
**Selectable CCT**  
3000K | 4000K | 5000K

## OPTIONS



**Photocell (PHOT)**



**PIR Sensor (PIR)**



**8 Watt Emergency Battery (EL8W)**

## PERFORMANCE DATA

Selectable LED - Low (SLED-L)				
Power Setting	Wattage	Lumens / LPW (Based on 3000K CCT)	Lumens / LPW (Based on 4000K CCT)	Lumens / LPW (Based on 5000K CCT)
100%	70 Watt	9800 Lumens   140lm/w	11000 Lumens   157lm/w	10200 Lumens   146lm/w
80%	56 Watt	8200 Lumens   146lm/w	9100 Lumens   163lm/w	8700 Lumens   155lm/w
60%	42 Watt	6400 Lumens   152lm/w	7000 Lumens   167lm/w	6800 Lumens   162lm/w
40%	28 Watt	4400 Lumens   157lm/w	4800 Lumens   171lm/w	4700 Lumens   168lm/w

Selectable LED - Medium (SLED-M)				
Power Setting	Wattage	Lumens / LPW (Based on 3000K CCT)	Lumens / LPW (Based on 4000K CCT)	Lumens / LPW (Based on 5000K CCT)
100%	125 Watt	17100 Lumens   137lm/w	19000 Lumens   152lm/w	18000 Lumens   144lm/w
80%	100 Watt	14200 Lumens   142lm/w	15700 Lumens   157lm/w	15000 Lumens   150lm/w
60%	75 Watt	11000 Lumens   147lm/w	12100 Lumens   161lm/w	11700 Lumens   156lm/w
40%	50 Watt	7600 Lumens   152lm/w	8200 Lumens   164lm/w	8100 Lumens   162lm/w

Selectable LED - High (SLED-H)				
Power Setting	Wattage	Lumens / LPW (Based on 3000K CCT)	Lumens / LPW (Based on 4000K CCT)	Lumens / LPW (Based on 5000K CCT)
100%	135 Watt	19000 Lumens   141lm/w	20000 Lumens   148lm/w	19400 Lumens   144lm/w
80%	108 Watt	15700 Lumens   145lm/w	16400 Lumens   152lm/w	16000 Lumens   148lm/w
60%	81 Watt	12000 Lumens   148lm/w	12600 Lumens   156lm/w	12300 Lumens   152lm/w
40%	54 Watt	8200 Lumens   152lm/w	8600 Lumens   159lm/w	8400 Lumens   156lm/w