

Euro Glass

Berlin • Dublin • Helsinki • London

EURO ARCHITECTURAL FAMILY

Wall/Surface/Pendant Mount

Wide Spread Distribution LED

We reserve the right to revise the design or components of any product without notice.

CATALOG #		TYPE
PROJECT/LOCATION		
APPROVED BY		

SPECIFICATIONS

- DRIVER — Universal Voltage 120/277v Electronic Driver is standard for LED.
- EMERGENCY — Integral or Remote LED Emergency Battery.
- GASKETING — High temperature, non-aging black EPDM and/or neoprene rubber concealed in housing pocket and enclosed by cast-in drip shield and rear wire entrance hole to protect against outside contaminants.
- HOUSING — Heavy wall cast aluminum with wire access on four sides and back through threaded 1/2" conduit size entrance holes—Finished in Black oven baked Polyester Powder Coat.
- LIGHT ENGINE — Energy Efficient Light Emitting Diode (LED).
- LENS — Clear Prismatic Lens comes Standard. Formed from durable Molded Borosilicate Glass.
- LENS FASTENERS — Stainless steel tamperproof screws — (4) To secure lens in place.
- REFLECTOR — .032 textured aluminum for high efficiency and reduce arc tube voltage rise.
- COMPLIANCE — Built to comply with U.S. and Canadian safety standards. Suitable for wet locations.

BERLIN GLASS



DUBLIN GLASS



EURO GLASS DEEP CAST (NOT AVAILABLE IN SHALLOW)

HELSINKI GLASS

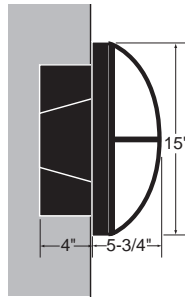


LONDON GLASS

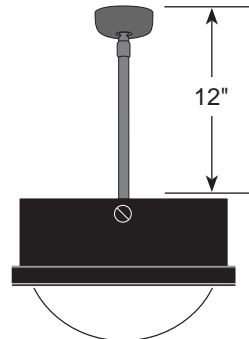


EURO GLASS SHALLOW OR DEEP CAST

OPTIONS

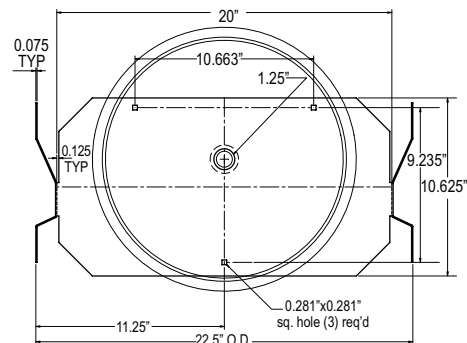
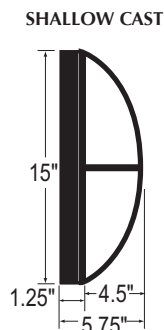
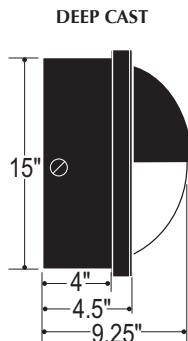


Shown as Semi-Recessed (SR)
- available in Deep Cast only



Shown with Pendant Mount (PEND)
- includes 12" Stem & Canopy

DIMENSIONS



Euro Glass

Berlin • Dublin • Helsinki • London

EURO ARCHITECTURAL FAMILY
Wall/Surface/Pendant Mount
Wide Spread Distribution LED

LAMP TYPE/QTY/WATTAGE ¹		
Visit www.eclipselightinginc.com for available IES files		
Fixture	EURO GLASS Deep Cast	EURO GLASS Shallow Cast
Dimensions - W x H x D	15" x 15" x 9 1/4"	15" x 15" x 5 1/4"
Light Emitting Diode	LED	15w / 30w

ORDERING GUIDE:

Series	Size	Mounting	Lamp/Wattage	Color	Voltage	Finish	Options
<input type="text"/>	<input type="text"/>	<input type="text"/>	<input type="text"/>	<input type="text"/>	<input type="text"/>	<input type="text"/>	<input type="text"/>

SERIES

- BE-G** = Berlin Glass Series—No Shallow Cast
- DU-G** = Dublin Glass Series—No Shallow Cast
- HE-G** = Helsinki Glass Series
- LO-G** = London Glass Series

SIZE

- L** = Deep Cast (9-1/4" Total Depth)
- SH** = Shallow Cast (5-3/4" Total Depth)

MOUNTING

- SM** = Surface Mount
- PEND** = Pendant Mount
— Includes 12" Stem & Canopy

LAMP TYPE/QUANTITY/WATTAGE

Refer to Chart Above

LED COLOR TEMPERATURE

- 3K** = ±3000K range LED
- 4K** = ±4000K range LED
- 5K** = ±5000K range LED
- 6K** = ±6000K range LED

VOLTAGE

- 120** = 120 Volts
- 277** = 277 Volts
- 347** = 347 Volts (Consult Factory for "S" size)
- EBU** = Universal Volt (120-277v) Driver
- 2EBU** = Two Universal Volt (120-277v) Drivers

FINISH

- BK** = Black—Standard
- BZ** = Bronze
- PNA** = Painted Natural Aluminum
- WH** = White

OPTIONS

- 9002** = Torx Tamperproof Screwdriver
- 9328** = Universal Photocell – 120/277Vz
- FUS** = Single Fusing
- DFUS** = Double Fusing
- GTD** = Generator Transfer Device (Bodine)
- SR** = Semi Recessed — Deep Only

LED OPTIONS

- BL1** = Bi-Level Light (High/Low)
— Single AC Input Feed, with Switch Sensor (Required)
- BL2** = Bi-Level Light (High/Low)
— Wired for Dual AC Input Feeds
- D7** = 0-10V low-voltage dimming (100-30% Standard, Consult Factory for Other)
- MSE** = Motion Sensor External
— Single circuit-all on, all off
Specify Finish: White (WH)/Bronze (BZ)
- MSE2** = Motion Sensor External
— Dual circuit, half on half off
Specify Finish: White (WH)/Bronze (BZ)
- MSI1** = Motion Sensor Integral (Microwave)²⁰
— Single Circuit: OFF / ALL-ON
- MSI2** = Motion Sensor Integral (Microwave)²⁰
— Single Circuit: HALF-ON / ALL-ON
- SG** = 10KA Surge Protection for LED fixtures
Available CP-M and CP-D Only
(meets ANSI spec C62.41.2)

EMERGENCY BATTERY OPTIONS^{3 5}

No onsite Emergency Power (AC or DC) is provided
Specify Fixture Voltage: 120V or 277V Power Feed
A=120V or B=277V

LED Emergency Battery ⁵⁰

- EL88** = LED 16 Watt (Integral)
- REL67** = LED 23 Watt Cold Weather (Remote)
- REL82** = LED 4 Watt (Remote)
- REL85** = LED 20 Watt (Remote)
- REL88** = LED 16 Watt (Remote_

NOTES:

- ¹ Consult Factory with requests regarding lamp sources, including LED, color temp., wattages or voltages not shown.
- ³ Consult Factory for additional Emergency Battery options.
- ²⁰ Max mounting height of fixture is 10 feet
- ²¹ Max WHIP length with the REL provided by the factory is 8 feet.
- ⁵⁰ Due to form and fit, final selection of the Battery Pack under discretion of Factory