

# Dunkirk-G

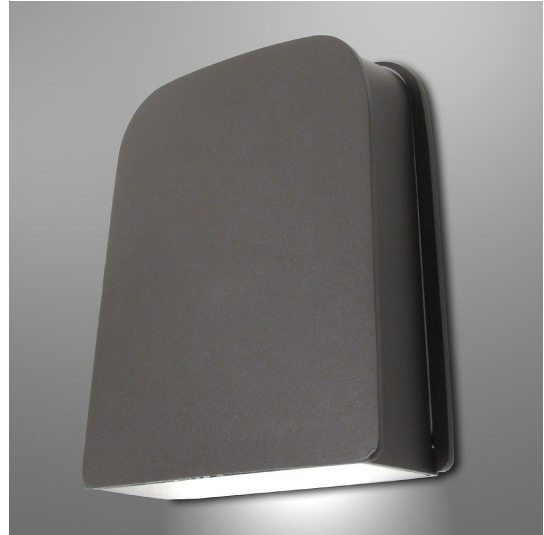
## FULL CUT-OFF WALL PACK FAMILY LED

We reserve the right to revise the design or components of any product without notice.

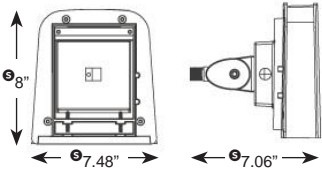
CATALOG #		TYPE
PROJECT/LOCATION		
APPROVED BY		

### SPECIFICATIONS

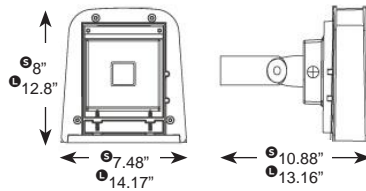
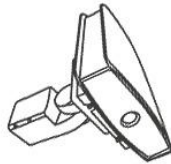
- HOUSING — Two piece precision die cast aluminum housing.
- LENS — Impact resistant borosilicate glass lens secured with stainless steel hardware.
- FINISH — Chip and fade resistant powder coat finish.
- MOUNTING — Mounts to standard 4" square electrical junction boxes. Alternate mounting options available which include Swivel Arm (SWV), Slipfitter (SF), and Trunnion (TN).
- DRIVER — High temperature rated, universal voltage (120-277V) driver standard. Dimmable driver available. Consult factory for alternate voltages and dimmable options.
- PHOTOCELL — (Optional) Industrial grade photocell. Specify 120 or 277V.
- COMPLIANCE — Built to comply with U.S. and Canadian Safety Standards. Suitable for outdoor Wet locations.



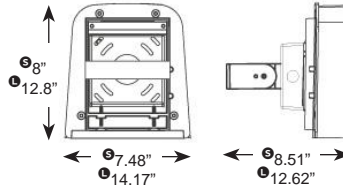
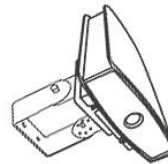
#### Swivel Arm (SWV)



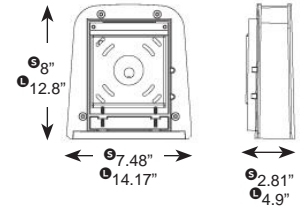
#### Slipfitter (SF)



#### Trunnion (TN)



#### Wall Mount (STANDARD)



**S** NOTE: Dimensions for Size SMALL

**L** NOTE: Dimensions for Size LARGE

DUNKIRK-G SIZE / WATTAGES		
Fixture	Dunkirk-G Small	Dunkirk-G Large
Dimensions (Length x Width x Depth)	8" Height x 7.48" Width x 2.81" Depth (Based on Standard Wall Mount)	12.8" Height x 14.17" Width x 4.9" Depth (Based on Standard Wall Mount)
Light Emitting Diode	LED	LED
	30W / 40W / 60W	90W / 150W

Series	Size	Mounting	Lamp/Wattage	Color	Voltage	Finish	Options
<input type="text"/>	<input type="text"/>	<input type="text"/>	<input type="text"/>	<input type="text"/>	<input type="text"/>	<input type="text"/>	<input type="text"/>

**SERIES**  
DK-G = Dunkirk-G Series

**SIZE**  
S = Small  
L = Large

**MOUNTING**  
SWV = Swivel Arm (Size Small ONLY)  
SF = Slipfitter  
TN = Trunnion  
WM = Wall Mount (STANDARD)

**LED WATTAGE**  
**Small LED Wattages**  
LED30 = 30 Watt LED (3431 Delivered Lumens)  
LED40 = 40 Watt LED (4376 Delivered Lumens)  
LED60 = 60 Watt LED (6792 Delivered Lumens)  
**Large LED Wattages**  
LED90 = 90 Watt LED (8519 Delivered Lumens)  
LED150 = 150 Watt LED (15790 Delivered Lumens)

**COLOR TEMP (LED)**  
5K = ±5000K range LED

**VOLTAGE**  
EBU = High Temp Universal Volt (120-277V)

**FINISH**  
BK = Black  
BZ = Bronze Standard  
PNA = Painted Natural Aluminum  
WH = White

**OPTIONS**  
9328 = Integral Dual Voltage Photocell – 120/277V  
MSE = Motion Sensor External  
Single circuit: All On / All Off  
Specify Finish: White (WH) / Bronze (BZ)  
MSE2 = Motion Sensor External  
Dual circuit: Half On / Half Off  
REL4W = Remote Emergency Battery: LED 4W

