

Astro ADA

Wall or Ceiling Mount — Horizontal or Vertical
ADA Compliant LED



We reserve the right to revise the design or components of any product without notice.

CATALOG #		TYPE
PROJECT/LOCATION		
APPROVED BY		

SPECIFICATIONS

- BACKPLATE — 16 Ga. aluminum (AL).
- DIFFUSER — .125 Clear Prismatic Polycarbonate Lens (CPR) is Standard and includes Glare Control. Opal Lens (OPL) and Satinized Polycarbonate Frosted Lens (SPF) are Optional. Optional Opaque Top (OQT — DarkSky Compliant) or Opaque Bottom (OQB).
- DRIVER — Universal Voltage 120/277v Electronic Driver is standard for LED.
- FASTENERS — Stainless steel tamperproof screws (2) to secure lens in place.
- FINISH — Corrosion and Weather resistant pre-treated extremely durable oven baked polyester powder or plated finish.

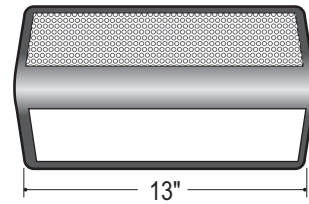
- GASKETING — High temperature, non-aging black epdm neoprene rubber around the entire lens perimeter and rear wire entrance hole to protect against dust, moisture and outside contaminants.
- HOUSING — Modular design using 16 Ga. aluminum. Mounts vertically or horizontally on the wall or ceiling. Standard configurations shown.
- LIGHT ENGINE — Energy Efficient Light Emitting Diode (LED).
- MOUNTING — Center access hole for indoor mounting to a "J" box or use (4) 5/16" dia holes for 1/4" dia bolts for outdoor/indoor for some models, Horizontal or Vertical.
- COMPLIANCE — Built to comply with U.S. and Canadian safety standards. Suitable for wet locations.

HOUSING OPTIONS

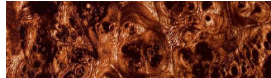
Astro ADA Horizontal Mount
Optional Opaque Top (OQT)
Dark Sky Compliant



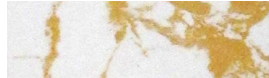
Astro ADA
Optional Top
Perforated Insert (PX)



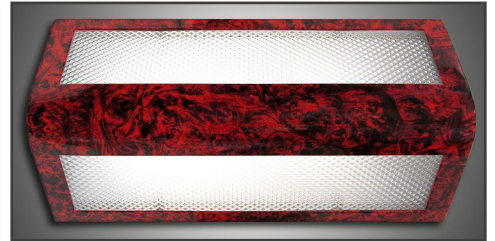
GRAVURA GRAPHIC FINISHES



Astro ADA — Tan Burlwood (TBW)



Astro ADA — White Gold Vein (WGV)



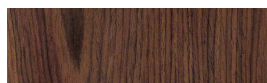
Astro ADA — Red Burlwood (RBW)



Astro ADA
Light Oak Wood (LOW)



Astro ADA
Maple with Gloss Finish
(MPL)



Astro ADA
Walnut Grain (WNT)



Astro ADA
Gold Marble (GMB)



Astro ADA
Travertine (TVT)

Astro ADA

Wall or Ceiling Mount — Horizontal or Vertical ADA Compliant LED

ORDERING GUIDE:

Series	Mounting	Lens	LED Wattage	Color Temp	Voltage	Finish	Options

SERIES

AS-ADA = Astro ADA Series (13"W x 7"H x 4"D)
*See Astro XL Spec-sheet for Lengths up to 4'

MOUNTING

HR = Horizontal Mount — STANDARD
VT = Vertical Mount

LENS

CPR = Clear Prismatic Polycarbonate — STANDARD
—Includes Glare Control
OPL = Opal Lens
SPF = Satinized Polycarbonate Frosted

LED WATTAGE

*Consult Factory for CFL Lamping Options
LED15 = 15 Watt LED
LED30 = 30 Watt LED²

LED COLOR TEMPERATURE

3K = ±3000K range LED
4K = ±4000K range LED
5K = ±5000K range LED

VOLTAGE

EBU = Universal Volt (120-277v) Electronic Driver
2EBU = Two Universal Volt (120-277v)
Electronic Drivers²

FINISH

BK = Black Finish
BZ = Bronze Finish
PNA = Painted Natural Aluminum
WH = White Finish

*Additional Gravura Graphic Finishes Available
See Below for Finish Samples

OPTIONS

9002 = Tamperproof Screwdriver
BB = Backbox (Required with 2EBU; and LED30)
(Backbox removes ADA status)
FUS = Single Fusing
DFUS = Double Fusing
OQB = Opaque Bottom
OQT = Opaque Top — DarkSky Compliant
PX = Perflex (Specify Finish)

LED OPTIONS

BL1 = Bi-Level Light (High/Low)
—Single AC Input Feed
—Switch Sensor (Required)
BL2 = Bi-Level Light (High/Low)
—Wired for Dual AC Input Feeds
D7 = 0-10V low-voltage dimming (100-30%
Standard, Consult Factory for Other)
D8 = LED Dimming: Forward Phase (Triac)
MSE = Motion Sensor External²
—Single circuit-all on, all off
Specify Finish: White (WH)/Bronze (BZ)
MSE2 = Motion Sensor External²
—Dual circuit, half on half off
Specify Finish: White (WH)/Bronze (BZ)
SG = 10KA Surge Protection for LED fixtures
(meets ANSI spec C62.41.2)

EMERGENCY OPTIONS³⁴

No onsite Emergency Power (AC or DC) is provided
Specify Fixture Voltage: 120V or 277V Power Feed
A=120V or B=277V

LED Emergency Battery

Factory Recommended
REL82 = LED 4 Watt (Remote)

NOTES:

- ¹ Consult Factory with requests regarding LEDs, or alternate lamp sources, including color temp., wattages or voltages not shown.
- ² Backbox required
- ³ Consult Factory for additional Emergency Battery options not shown.
- ⁴ Due to form and fit, final selection of the Battery Pack under discretion of Factory.

GRAVURA GRAPHICS FINISHES



White Vein (WVN)



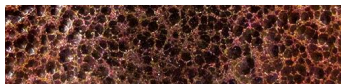
White Gold Vein (WGV)



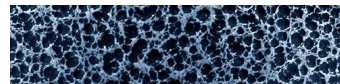
Gold Marble (GMB)



Travertine (TVT)



Copper Hybrid (CHB)



Silver Hybrid (SHB)



Silver Blue Smoke (SBS)



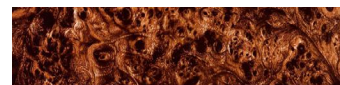
Silver Flames (SFL)



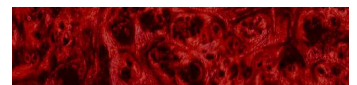
Orange Camo Vista (OCV)



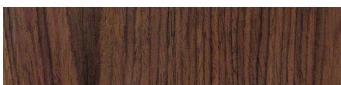
Red Camo Vista (RCV)



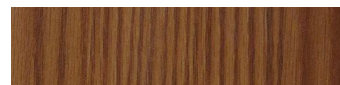
Tan Burlwood (TBW)



Red Burlwood (RBW)



Walnut Grain (WNT)



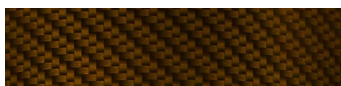
Tan Oak Wood (TOW)



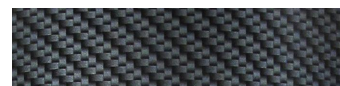
Maple with Gloss Finish (MPL)



Light Oak Wood (LOW)



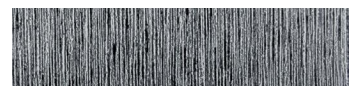
Gold Carbon Fiber (GCF)



Black Carbon Fiber (BCF)



Silver Carbon Fiber (SCF)



Stainless Steel (SST)



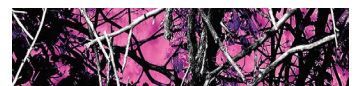
Handbrushed Swirl (HBS)



Grey Diamond Plate (GDP)



Handbrushed Aluminum (HBA)



Pink Swirl (PSW)