

SMSR6

STAINLESS STEEL SERIES

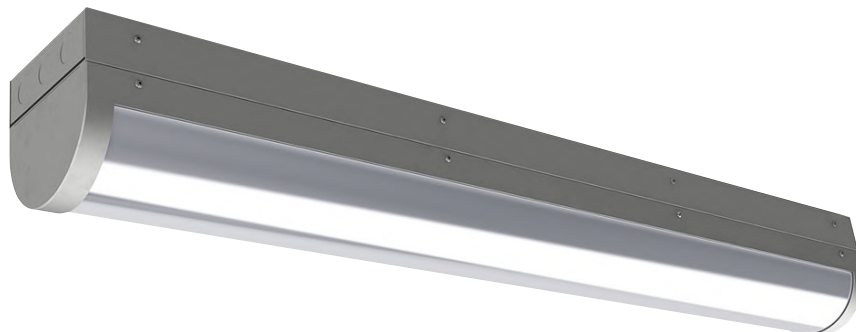
Linear LED Surface Mount Luminaire

Vandal Resistant/IP65 Tandem Surface Mount Design



We reserve the right to revise the design or components of any product without notice.

CATALOG #		TYPE
PROJECT/LOCATION		
APPROVED BY		



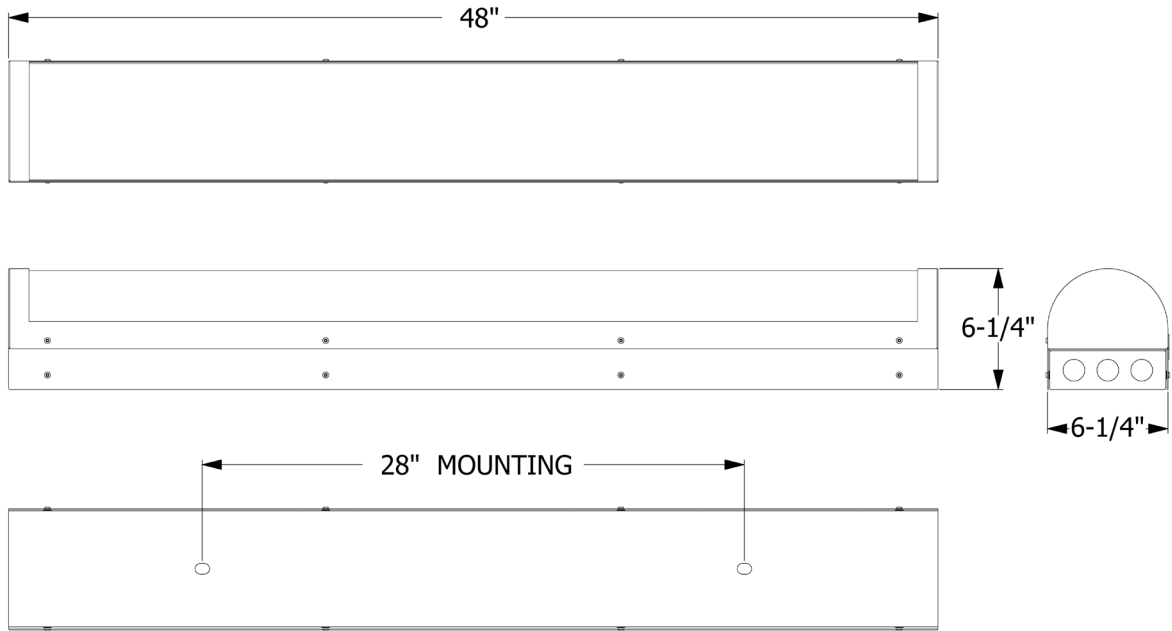
SPECIFICATIONS

- **HOUSING** — 18 gauge 304 Stainless Steel. Die formed with seam welded and ground smooth construction. Mechanically attached to a Patent Pending mounting plate that reduces installation time and labor.
- **HINGE** — 304 Stainless Steel, full length continuous piano hinge. Hinge is continuous seam welded to the mounting plate and mechanically attached to housing. Brushed Satin No. 4 finish.
- **RACEWAY** — 16 gauge 304 stainless steel. Die formed with seam welded and ground smooth construction. Raceway provided with three partitioned compartments for feed wiring. Six 3/4" trade size knockouts provided (three on each end). Two Retractable Partitions provided at each end of raceway for ease of installation for Tandem Mounting applications.
- **LENS** — High Impact Vandal Resistant, 0.125" thick Satinized Polycarbonate with internal linear prisms (standard). Satinized polycarbonate is U.V. Stabilized and designed to control LED Striations. Lensing is sealed into housing with durable and long lasting neoprene and/or EPDM gasketing, for IP65 application. Outer surface of lens is smooth for easy cleaning and maintenance.
- **POWER-TRAY** — Die formed, 14 gauge aluminum. Power-tray holds LED light engines, LED Driver and panel mount fusing. Power-tray is mechanically attached to the mounting plate via vibration resistant hardware and is easily removable for user maintenance. Three pole quick disconnect provided in power tray.
- **GASKETING** — UL Recognized, Neoprene Closed Cell gasketing used for sealing housing, diffuser and raceway. All housing gasketing is concealed and non-visible.
- **HARDWARE** — All supplied mechanical hardware is corrosion resistant stainless steel.
- **FINISH** — Housing, Raceway and Hinge finished in Brushed Natural Satin No. 4.
- **SINGLE FIXTURE MOUNTING** — Raceway supplied with two mounting holes on 28" centers for mounting direct to surface with contractor supplied 1/2" hardware. Gaskets provided for sealing raceway to mounting surface. Stainless steel lanyards and quick links provided for hanging luminaire from raceway for line connections. Luminaire housing is secured to raceway via eight vibration resistant mounting screws.
- **TANDEM MOUNTING** — When Tandem mounting, three 3/4" chase nipples and lock nuts are used to connect each luminaire raceway end to end. When the "TDM" option is selected, manufacture ships end gaskets to seal each luminaire end to end for IP65 protection. Luminaire's are then mounted the same as a single mounted fixture.
- **DRIVERS** — UL Listed, Universal voltage drivers (120 thru 277V) with 0-10V dimming capability. FCC Class A compliant with a minimum power factor of 0.90%. Drivers have a minimum starting temperatures of -30°C.
- **OPERATING TEMPERATURE** — 40°C Ambient.
- **WIRING** — All wiring rated for 1000V.
- **COMPLIANCE** — Built to comply with US and Canadian safety standards. IP65 Rated. Meets 3G Vibration requirements for 100,000 cycles.
- **MADE IN USA** — The products listed are manufactured in the U.S. and comply with the Buy America Act requirements for Transit systems as prescribed in: 49 U.S. C§ 5323(j)/49 CFR Part 661.
- **WARRANTY** — 5-year warranty is standard.

APPLICATIONS

- TRANSPORTATION APPLICATIONS
- ATHLETIC FACILITIES
- NATATORIUMS / PUBLIC POOLS
- SCHOOLS
- LOCKER ROOMS
- HOSPITALS
- PUBLIC HOUSING COMPLEXES
- ROADWAY UNDERPASSES
- STAIRWELLS
- TRUCK DOCKS
- VANITY
- ASSISTED LIVING

DIMENSIONS



ORDERING GUIDE:

Series	Length	Wattage	CCT	Voltage	Options

SERIES

SMSR6 = Stainless Steel Surface Mount Round Linear Luminaire

LENGTH

4' = 46 1/2" Length x 6 1/4" Width x 6 1/4" Depth

LED WATTAGE

LED40 = (4')40 Watt

LED50 = (4')50 Watt

LED60 = (4')60 Watt

LED COLOR TEMPERATURE (CCT)

3K = ±3000K Range LED

35K = ±3500K Range LED

4K = ±4000K Range LED

5K = ±5000K Range LED

VOLTAGE

EBU = Universal Volt (120-277v) Electronic Driver

(2)EBU = Two Universal Volt (120-277v) Electronic Drivers

NOTE: Required for (2)EL23 Option.

OPTIONS

AM = Anti-Microbial Finish

CHL = Custom Mounting Holes

— Contractor must request shop drawing for hole location markup. Shop drawings must be returned signed and approved as noted.

CRS = 18 Gauge Cold Rolled Steel Construction

— Housing, Door-frame and Internal Bracketry.

— All parts finished in Sky White Polyester Powder Coat.

EPX = Epoxy Coated Housing

JNR = 4' Joiner Raceway. Used in conjunction with SMSR6 to make continuous rows, where long electrical runs are required.

(Note: Joiner has no lens.)

NAT = Natatorium Construction

NW = No Wire way supplied. Selected when EL23 option is integral to a single fixture -or- when individual luminaires do not require a wire raceway.

PFUS = Panel Mount Fuse Holder with Screw In Type Knob access
— Panel mount fuse holders are rated for 30 AMP Maximum

SS = 18 Gauge 304 Stainless Steel Housing (Standard)

— (Ceiling side faces finished in Natural Satin No.4 Finish).

TDM = Specify number of luminaires to be tandem mounted.

— Example: TDM4 for four luminaires

TP = Center Pin Reject style Security Lock-up screws for door frame.
— 18-8 Stainless Steel.

EL23 = (ONE) 23 Watt (700mA) Bodine Emergency Backup, Cold Pack.

— 90 Minute Emergency Operation

— Maintenance Free Nickel Cadmium Batteries / 7-10yr Lifespan

— Operational Range: -20°C to +60°C (-4°F to +140°F)

(2)EL23 = (TWO) 23 Watt (700mA) Bodine Emergency Backup, Cold Pack.

— 90 Minute Emergency Operation

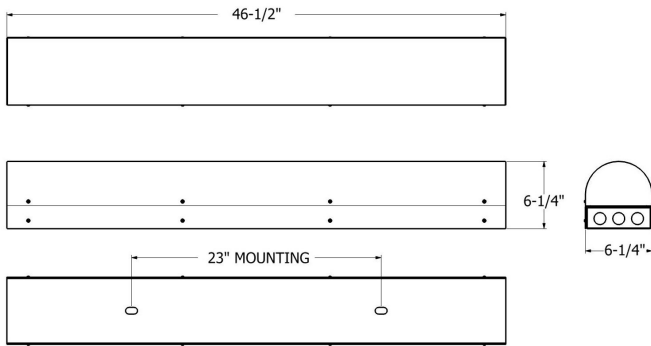
— Maintenance Free Nickel Cadmium Batteries / 7-10yr Lifespan

— Operational Range: -20°C to +60°C (-4°F to +140°F)

— Supplied in 4' Joiner Emergency Box. Must Select **TDM** Option.

NOTE: Must also select (2)EBU option.

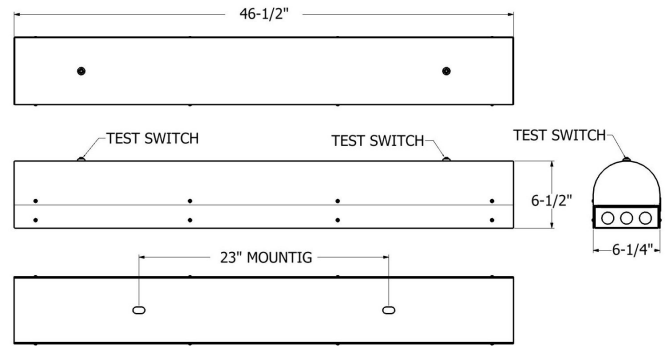
TANDEM OPTIONS



OPTION (JNR)

4' Tandem Mounted Joiner Raceway

Used in conjunction with the SMSR6 to make continuous rows, where long electrical runs are required. Incorporates three partitioned compartments for feed wiring. Six 3/4" chase nipples and two end gaskets provided for sealing to meet IP65 rating.



OPTION (2)EL23

Two 23-Watt (700mA) Bodine Emergency Cold-Pack Backups

Supplied in a 4' joiner emergency box. Incorporates three partitioned compartments for feed wiring. Six 3/4" chase nipples and two end gaskets provided for sealing to meet IP65 rating.

*Must also select **TDM** option and also **(2)EBU** option for luminaire.

EXAMPLE

LUMINAIRE

Catalog Number:

SMSR6-4-LED40-5K-(2)EBU-SS-TDM

JOINER RACEWAY

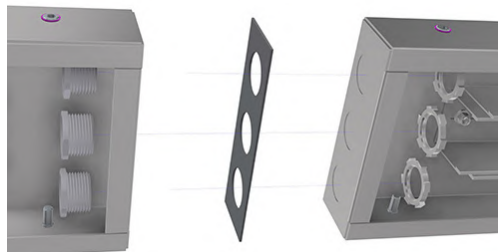
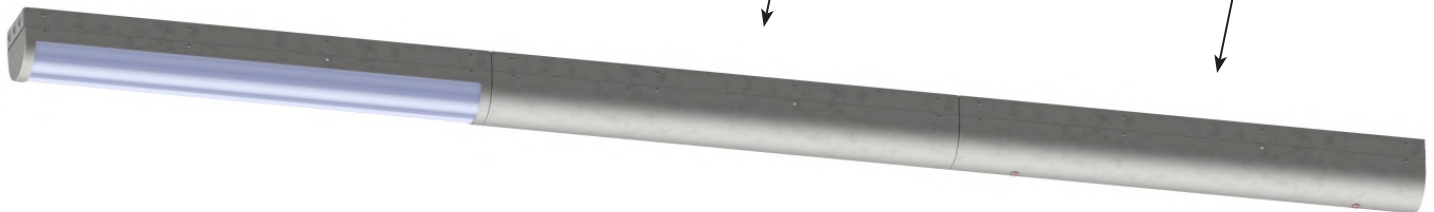
Catalog Number:

SMSR6-4-JNR-SS-TDM

TWO BODINE EMERGENCY BACKUPS

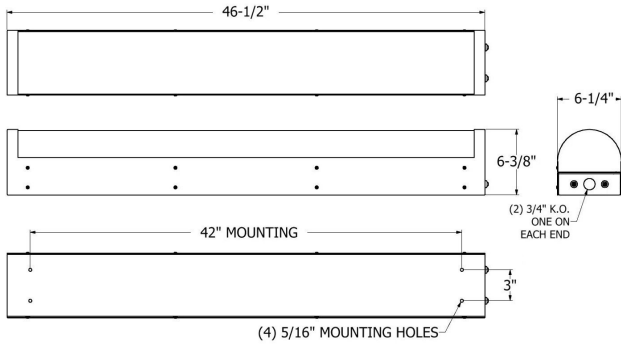
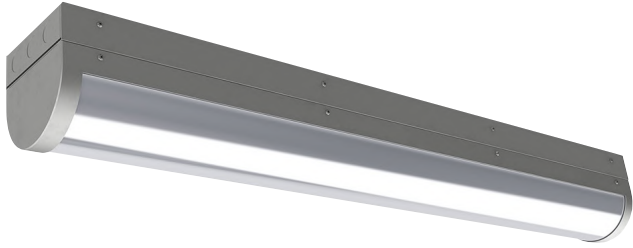
Catalog Number:

SMSR6-4-SS-(2)EL23-TDM



SMSR6 sections are joined together with three 3/4" chase nipples and end gaskets, provided for sealing to meet IP65 rating.

(NON)TANDEM OPTIONS

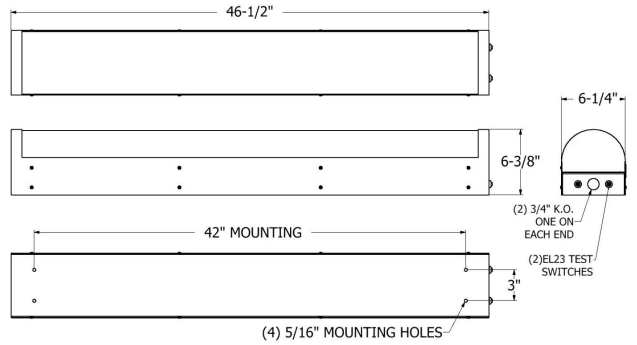
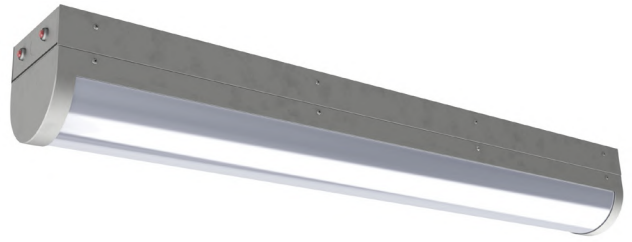


OPTION (NW)

4' Standalone with No Wire/Raceway

When ordering SMSR6 as a standalone luminaire, select **(NW)** option. Standalone luminaire is not rated for through wiring.

Note: When ordered as standalone, luminaire height is 6-3/8" tall and cannot be tandem mounted to standard 6-1/4" tall SMSR6.



OPTION (NW) and 2(EL23)

4' Standalone with Two 23-Watt Bodine Emergency Battery Cold-Pack Backups (No Wire/Raceway)

When ordering SMSR6 as a standalone luminaire, with the **2(EL23)** and **(NW)** options, standalone luminaire is not rated for through wiring.

Note: When ordered as standalone, luminaire height is 6-3/8" tall and cannot be tandem mounted to standard 6-1/4" tall SMSR6.

PHOTOMETRIC DATA

Test # LLI-15007-1-SMSR6

CATALOGUE #: SMSR6-LED70-EBU

Test Date: 1/12/2018 — Tested in accordance with LM-79-80. The results contained in this summary report pertain only to the tested sample.

Summary of Results					
Lamp Output	Lumen Efficacy	Input Voltage	Input Wattage	Distribution	BUG Rating
8043.3 Lumens	117.4 LPW	120V	68.5W	Type II, Very Short	B2-U3-G3

