

Astro

DECORATIVE HIGH ABUSE

Wall Or Ceiling Mount

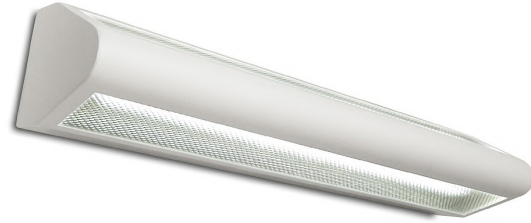
ADA Compliant

We reserve the right to revise the design or components of any product without notice.

CATALOG #		TYPE
PROJECT/LOCATION		
APPROVED BY		

SPECIFICATIONS

- BACKPLATE — 14 ga. aluminum die formed with multiple bends for maximum rigidity and unitized with all electrical components.
- DRIVER — Universal Volt 120/277v electronic driver with 0-10V dimming is standard.
- EMERGENCY — Optional Integral (EL) or Remote (REL) Emergency Batteries.
- FASTENER — Stainless steel torx tamperproof screws to secure housing to backplate.
- FINISH — All metal parts are phosphate pre-treated and finished in oven baked polyester powder coat.
- HOUSING — 14 ga. heavy aluminum with welded ends for maximum strength and rigidity. Internal Up/Down Barrier is standard for Bi-Level Switching option (BLS).
- LENS — .125" Prismatic Polycarbonate Lens is standard and includes glare control.
- LIGHT ENGINE — Energy Efficient Light Emitting Diode.
- COMPLIANCE — Built to comply with U.S. and Canadian safety standards Suitable For Wet Locations. **Build America/Buy America (BABA), Buy American Act (BAA) and ADA compliant.**



ORDERING INFO

Series	Mounting	Wattage	CCT	Voltage	Finish	Options

ORDERING GUIDE:

SERIES

- AS-XL = Astro XL Series (24")
- AS-XL1 = Astro XL1 Series (36")
- AS-XL2 = Astro XL2 Series (48")

MOUNTING

- C = Ceiling Mount
- HR = Horizontal Wall Mount — STANDARD
- VT = Vertical Wall Mount

MOUNTING OPTIONS

- TDM = Tandem for Row Mount ^②

WATTAGE

- Refer to Below Chart for Size/Wattage Compatibility
- LED(xx) = LED (xx = Wattage, ex: LED50)

COLOR TEMPERATURE (CCT)

- 3K = ±3000K range LED
- 35K = ±3500K range LED
- 4K = ±4000K range LED
- 5K = ±5000K range LED

VOLTAGE

- 347 = 347 Volts
- UNV = Universal Volt (120-277v) Electronic Driver

STANDARD FINISH

- BK = Black Finish
- BZ = Bronze Finish
- PNA = Painted Natural Aluminum
- SGR = Silver Gray
- WH = White Finish

PREMIUM UPCHARGE FINISH

- CC = Custom Color (Visit www.ralcolor.com)
- Provide RAL# or Make-to-Match Color Chip

INHIBITOR FINISH

- +NAT = Epoxy Coating for Chlorine Environments
- +OFC = Epoxy Coating for Ocean Front Environments

LENS OPTIONS

- OPL = Opal Acrylic Lens

SHIELD OPTIONS

- OB = Opaque Bottom - Uplight Only
- OT = Opaque Top - Downlight Only (Dark Sky)

PHOTOCELL OPTION

- 9328 = Photocell Button (120/277V) ^②

CONTROL OPTIONS

MANUAL CONTROL (Wall Switch or Control System)

Note: **Cannot be used with Sensor Controls below**

Note: **0-10V (100-30%) Dimming is Standard**

D7A = 0-10VDC LED Dimming Driver (100-10%)

D7B = 0-10VDC LED Dimming Driver (100-1%)

BLS = Bi-Level Switching (Includes Two Drivers) ^②

— Internal Up/Down Barrier is Standard

OR

Sensor Control (Sensor Integral to Fixture)

Note: **Cannot be used with Manual Controls above**

OCC = Occupancy Sensing | Motion Sensor Integral ^②

— Microwave / Single Feed / 120/277V Only

— Standby Dim Level Presets: ON/OFF (0%/100%)

BLD = Bi-Level Dimming | Motion Sensor Integral ^②

— Microwave / Single Feed / 120/277V Only

— Standby Dim Level Presets:

10% / 20% / 30% (Standard) / 50%

BLDA-E = Bi-Level Dimming | Motion Sensor External ^② ^③

— Ambient Light Sensing Feature (AMB)

— Microwave / Single Feed / 120/277V Only

— Standby Dim Level Presets: 10% / 20% / 30% / 50%

BACK BOX OPTIONS

BB2 = 24" X 1.75" Back Box

BB3 = 36" X 1.75" Back Box

BB4 = 48" X 1.75" Back Box

BB4D = 48" X 2" Back Box

MISC OPTIONS

FUS = Single Fusing

DFUS = Double Fusing (For BLS Applications)

PS = On/Off Push Switch (120V Only)

EMERGENCY BATTERY OPTIONS^③

Meets California Energy Commission Title 20: (CEC-400-2014-009-CMF) Efficiency Standards

EL8W = Integral LED 8 Watt ^②

EL10W = Integral LED 10 Watt ^②

EL16W = Integral LED 16 Watt ^②

REL8W = Remote LED 8 Watt

REL10W = Remote LED 10 Watt

REL16W = Remote LED 16 Watt

Cold Weather Emergency Batteries:

Operating Temp: -20°C thru 50°C / NON-CEC Compliant

EL10W-CW = Integral LED 10 Watt (Cold Weather) ^②

REL10W-CW = Remote LED 10 Watt (Cold Weather)

ACCESSORY OPTIONS (order as a separate line)

9002 = Tamperproof Screwdriver

REMT0009 = Remote Controller for Sensor Options

NOTES:

^① Backbox (BB) Required.

^② Max mounting height of fixture is 18' (18 feet).

^③ Final selection of the Battery Pack under discretion of Factory.

LED WATTAGE				
Visit www.eclipselightinginc.com for available IES files				
Fixture	Astro XL		Astro XL1	
Dimensions L x H x D	24" x 4.8" x 4"		36" x 4.8" x 4"	
Light Emitting Diode	LED	20W / 30W	30W / 40W / 50W	40W / 50W / 60W ^②

Astro

DECORATIVE HIGH ABUSE
Wall Or Ceiling Mount
ADA Compliant

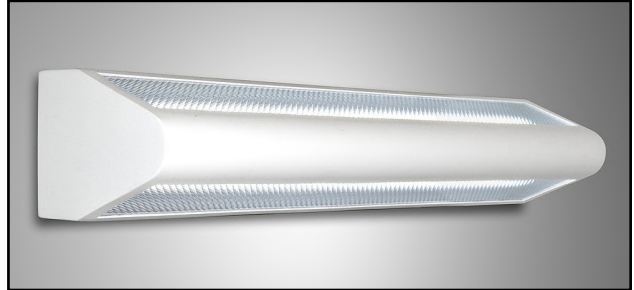
We reserve the right to revise the design or components of any product without notice.

CATALOG #		TYPE
PROJECT/LOCATION		
APPROVED BY		

MOUNTING

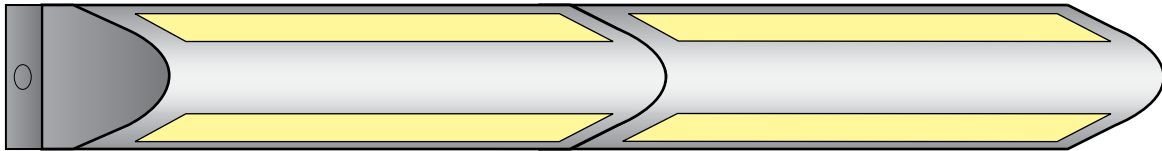


Ceiling Mount (C)



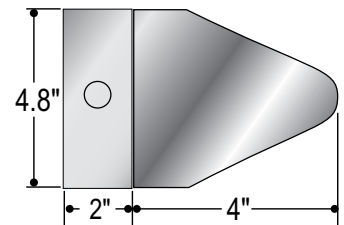
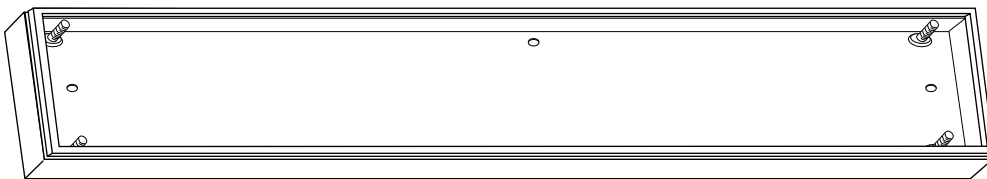
Horizontal Wall Mount (HR)

TANDEM OPTION



Tandem Mounting Option (TDM)
Requires Back Box (BB)

BACK BOX OPTION



Astro Side View
Shown with BB option (Non-ADA)

Astro

DECORATIVE HIGH ABUSE Wall Or Ceiling Mount ADA Compliant

We reserve the right to revise the design or components of any product without notice.

CATALOG #		TYPE
PROJECT/LOCATION		
APPROVED BY		

LED WATTAGE/LUMEN DATA CHARTS

LED Watts vs. LED Color Temp — Lumen Output				
CCT	3000K (3K)	3500K (35K)	4000K (4K)	5000K (5K)
15 Watt	1866 Lumens	1897 Lumens	1950 Lumens	2012 Lumens
20 Watt	2354 Lumens	2394 Lumens	2460 Lumens	2539 Lumens
30 Watt	3470 Lumens	3528 Lumens	3626 Lumens	3742 Lumens
40 Watt	4709 Lumens	4788 Lumens	4921 Lumens	5078 Lumens
50 Watt	5700 Lumens	5795 Lumens	5956 Lumens	6147 Lumens
60 Watt [Ⓟ]	6841 Lumens	6955 Lumens	7148 Lumens	7377 Lumens

NOTE: Lumen Output listed is estimated based upon delivered lumens at 25°C. For Additional information, see LM79 Report.

Lumen Ambient Temp Multipliers	
Ambient Temp.	Lumen Multiplier
0°C / 32°F	1.05
10°C / 50°F	1.03
20°C / 68°F	1.01
25°C / 77°F	1.00
30°C / 86°F	0.99
40°C / 104°F	0.96

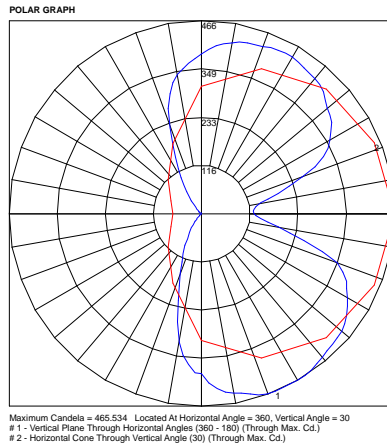
NOTE: Use these multipliers to determine relative lumen output for average ambient temps for 0-40°C (32-104°F).

Projected LED Lumen Maintenance	
Operating Hours	Lumen Maintenance Factor
0 Hrs	1.0
25,000 Hrs	0.97
50,000 Hrs	0.95
100,000 Hrs	0.90

PHOTOMETRIC DATA

Summary of Results AS-XL-HR-OPL-LED15-4K-UNV-WH-D7B					
Lumen Output	Efficacy	Input Power	CCT	Distribution	BUG Rating
1,958.5 Lumens	130.6 Lm/W	15.0W	4000K	Type IV	B0-U4-G1

LCS Summary	
Zone	Lumens
Forward Low (0-30)	174.5
Forward Medium (30-60)	405.4
Forward High (60-80)	193.3
Forward Very High (80-90)	44.2
Back Low (0-30)	99.1
Back Medium (30-60)	67.7
Back High (60-80)	8.8
Back Very High (80-90)	1.0
Up Low (90-100)	41.3
Up High (100-180)	923.2



Summary of Results AS-XL2-C-CPR-LED60-5K-UNV					
Lumen Output	Efficacy	Input Power	CCT	Distribution	BUG Rating
6,407.3 Lumens	107.7 Lm/W	59.5W	5000K	Type IV	B1-U5-G2

LCS Summary	
Zone	Lumens
Forward Low (0-30)	570.9
Forward Medium (30-60)	1326.4
Forward High (60-80)	632.4
Forward Very High (80-90)	144.5
Back Low (0-30)	324.1
Back Medium (30-60)	221.5
Back High (60-80)	28.7
Back Very High (80-90)	3.2
Up Low (90-100)	135.1
Up High (100-180)	3020.5

