

Parkwood

Parking Facility/Multi-Purpose Room LED

We reserve the right to revise the design or components of any product without notice.

CATALOG #		TYPE
PROJECT/LOCATION		
APPROVED BY		

SPECIFICATIONS

- DRIVER — Universal Voltage 120/277v Electronic Driver with 0-10V dimming is standard.
- DIFFUSER — Vandal resistant, 15" diameter, clear UV-stabilized prismatic polycarbonate.
- GASKETING — High temp. silicone rubber, & rear wire entrance hole to protect against outside contaminants.
- HOUSING — Die Cast Chromate Coating Textured Finish — Bronze (BZ) Standard.
- LIGHT ENGINE — Energy Efficient Light Emitting Diode (LED).
- LENS FASTENERS — (1) Stainless Steel Tamper Proof Screw to Secure Ring Assembly.
- MOUNTING — Surface Mount: Housing is supplied with three 0.312" clearance holes for 1/4" screws.
- COMPLIANCE — Built to comply with U.S. and Canadian safety standards. Suitable for wet locations. Complies with Buy American Act. IP65 rated sealed LED compartment.
- WARRANTY — 5-year Limited Warranty is Standard.



ORDERING INFO

Series	Wattage	CCT	Voltage	Finish	Options

ORDERING GUIDE:

SERIES

PW = Parkwood Series (15" Dia. x 11 1/4" Depth)

WATTAGE

NOTE: Delivered Lumens Based on 5000K CCT

LED40 = 40 Watt LED (4,960 Delivered Lumens)

LED50 = 50 Watt LED (6,200 Delivered Lumens)

LED60 = 60 Watt LED (7,440 Delivered Lumens)

SLED = Selectable LED: 25W / 38W / 50W

COLOR TEMPERATURE (CCT)

3K = ±3000K range

4K = ±4000K range

5K = ±5000K range

VOLTAGE

347 = 347 Volt

480 = 480 Volt

UNV = Universal Volt (120-277v) Electronic Driver

STANDARD FINISH

BZ = Bronze Finish

PREMIUM UPCHARGE FINISH

BK = Black Finish

WH = White Finish

CC = Custom Color (Visit www.ralcolor.com)

INHIBITOR FINISH

+NAT = Epoxy Coating for Chlorine Environments
— LED Boards Only

MOUNTING OPTIONS

QM = Quick Mount Bracket (Mounts over J-BOX)

RMB = Rapid Mount Bracket (Mounts over J-BOX)

PEND = Pendant Mount

— 6" Stem is Standard (1/2" Dia.)

— For Other Stem Lengths (Consult Factory)

Choose Pendant Canopy Style:

SWC-RR = Swivel Canopy for 4" Round J-Box

— Rapid Mount with Hinged Door

SWC-SR = Swivel Canopy for 4" Square J-Box

— Rapid Mount with Hinged Door

Note: See Page 2 for Images/Examples

PHOTOCELL OPTION

9328 = Photocell Button (120/277V)

CONTROL OPTIONS (Choose from Manual or Sensor)

MANUAL CONTROL (Wall Switch or Control System)

Note: Cannot be used with Sensor Controls below

Note: 0-10V (100-30%) Dimming is Standard

D7A = 0-10VDC LED Dimming Driver (100-10%)

D7B = 0-10VDC LED Dimming Driver (100-1%)

BLS = Bi-Level Switching — Using 2 Drivers

OR

Sensor Control (Sensor Integral to Fixture)

Note: Cannot be used with Manual Controls above

Note: See Accessory Options for Required Remote Controller

OCC = Occupancy Sensing | Motion Sensor Integral²⁰

— Microwave / Single Feed / 120/277V Only

— Standby Dim Level Presets: ON/OFF (0%/100%)

BLD = Bi-Level Dimming | Motion Sensor Integral²⁰

— Microwave / Single Feed / 120/277V Only

— Standby Dim Level Presets:

10% / 20% / 30% (Standard) / 50%

BLDA-E = Bi-Level Dimming | Motion Sensor External²⁰

— Ambient Light Sensing Feature (AMB)

— Microwave / Single Feed / 120/277V Only

— Standby Dim Level Presets:

10% / 20% / 30% (Standard) / 50%

— Bi-Level Control Initiated at AMB Light Level Preset

MISC OPTIONS

FUS = Single Fusing

DFUS = Double Fusing

EMERGENCY BATTERY OPTIONS^{20 30}

Meets California Energy Commission Title 20:
(CEC-400-2014-009-CMF) Efficiency Standards

REL8W = Remote LED 8 Watt

REL16W = Remote LED 16 Watt

Cold Weather Emergency Batteries:

Operating Temp: -20°C thru 50°C, NON-CEC Compliant

REL10W-CW = Remote LED 10 Watt (Cold Weather)

ACCESSORY OPTIONS (order as a separate line)

9002 = Tamperproof Screwdriver

REMT0009 = Remote Controller for Sensor Options

NOTES:

²⁰ Max mounting height of fixture is 18' (18 feet)

³⁰ Max WHIP length of the REL is 8 feet.

³⁵ Final selection of the Battery Pack under discretion of Factory

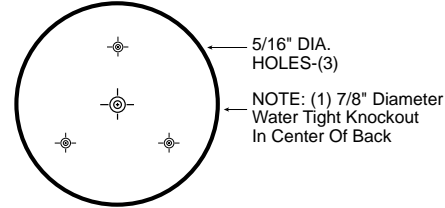
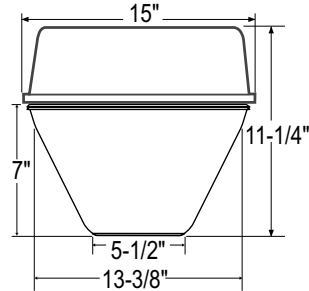
Parkwood

**Parking Facility/Multi-Purpose Room
LED**

We reserve the right to revise the design or components of any product without notice.

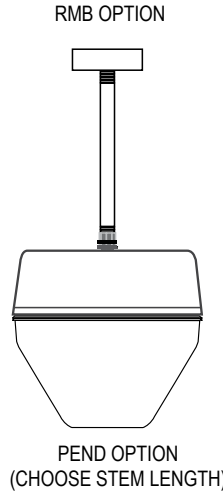
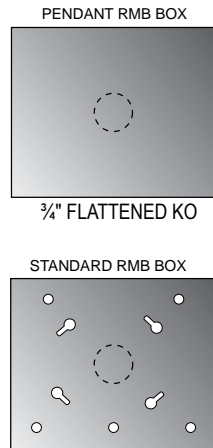
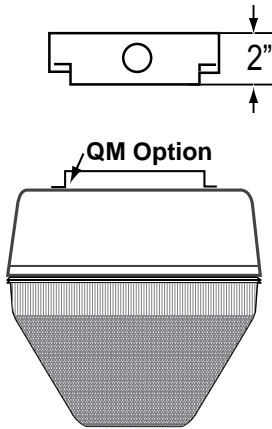
CATALOG #		TYPE
PROJECT/LOCATION		
APPROVED BY		

DIMENSIONS

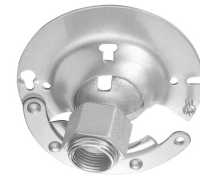


MOUNTING DIMENSIONS

MOUNTING OPTIONS



Swivel Canopy Types for Pendant Mount



Swivel Canopy 4" for Round/Octagonal J-BOX (SWC-RR)



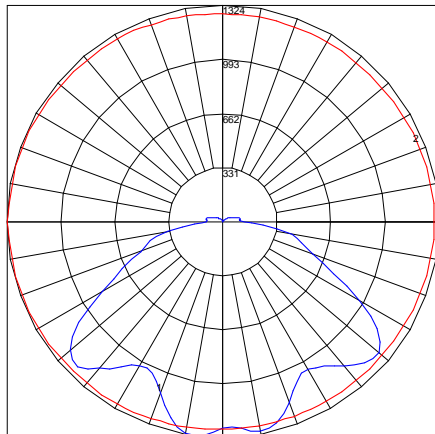
Swivel Canopy 4" for Square J-BOX (SWC-SR)

PHOTOMETRIC DATA

Test #: 104333287CHI-001 | Catalogue #: PWL-LED27/47-4K-UNV-BZ-RMB | Test Date: 5/14/2020

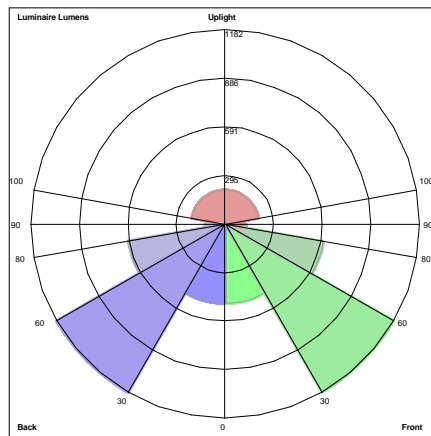
Lamp Output	Lumen Efficacy	Input Voltage	Input Current	Input Wattage	Power Factor	Distribution Type	Color Temp	BUG Rating
5100.7 Lumens	113.5 LPW	120.1V	375.9mA	44.96W	0.996	Type VS	4000K	B2-U3-G2

POLAR GRAPH



Maximum Candela = 1324.4 Located At Horizontal Angle = 180, Vertical Angle = 7.5
1 - Vertical Plane Through Horizontal Angles (180 - 0) (Through Max. Cd.)
2 - Horizontal Cone Through Vertical Angle (7.5) (Through Max. Cd.)

LUMINAIRE CLASSIFICATION SYSTEM (LCS) GRAPH



Luminaire Lumens:
Front: Low=482.8, Medium=1181.2, High=608.1, Very High=129.9
Back: Low=481.5, Medium=1181.8, High=597.0, Very High=123.2
Uplight: Low=111.8, High=203.9

LCS Summary

Zone	Lumens
Forward Low (0-30)	482.8
Forward Medium (30-60)	1181.2
Forward High (60-80)	608.1
Forward Very High (80-90)	129.9
Back Low (0-30)	481.5
Back Medium (30-60)	1181.8
Back High (60-80)	597.0
Back Very High (80-90)	123.2
Up Low (90-100)	111.8
Up High (100-180)	203.9