

Legacy WET Series

Indoor / Outdoor ADA LED Wall Sconce

Elegant Slim/Shallow Profile

Round or Rectangular Fascia Shield

We reserve the right to revise the design or components of any product without notice.

CATALOG #		TYPE
PROJECT/LOCATION		
APPROVED BY		

SPECIFICATIONS

- BACKPLATE — 14 Ga. aluminum (AL).
- SHIELD — Solid Aluminum Round or Rectangular Fascia Shield with Standard Side and Front Windows. Additional custom windows styles available - Consult Factory.
- FINISH — Durable indoor/outdoor powdercoat or designer Gravura finishes. (See Chart on Page 2).
- DRIVER — Universal Voltage 120~277V Electronic Driver, 0-10V dimming is standard.
- LIGHT ENGINE — Energy Efficient LED is standard.
- MOUNTING — Standard wall mount J-BOX strap.
- COMPLIANCE — Built to comply with U.S. and Canadian Safety standards. Suitable for Outdoor Wet location. Complies with Buy American Act.

APPLICATIONS

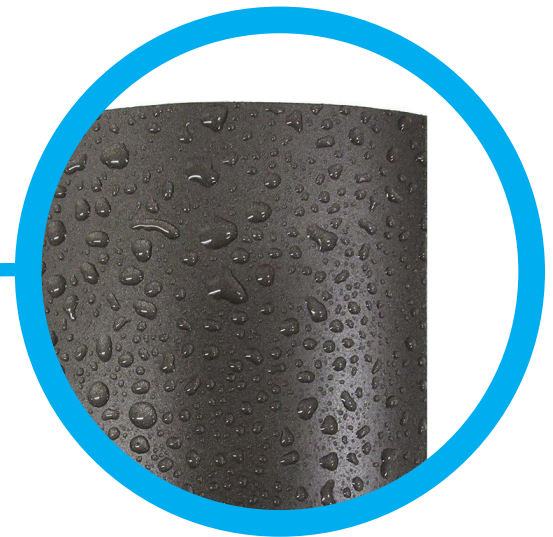
- HOSPITALITY
- RESTAURANTS
- THEATERS
- CONDOMINIUMS
- ENTRANCEWAYS
- VESTIBULES
- STAIRWELLS
- CORRIDORS / HALLWAYS



Rectangular (REC)
Rectangular Window Option (RW)
 4.5"Width x 14"Height x 2 3/8"Depth



Round (RND)
Solid Front Option (SF)
 5"Width x 14"Height x 2 3/4"Depth



Waterproof Housing and Construction

ORDERING GUIDE:	Series	Shape	LED Wattage	Color Temp	Voltage	Finish	Options

SERIES
 LGC-W = Legacy Wet Series

SHAPE
 RND = Round Shield
 REC = Rectangular

LED WATTAGE
 LED11 = 11 Watt Nominal - 2000 Initial Lumens
 — 0-10V Low-Voltage LED Dimming (100-30% Standard)

LED14 = 14 Watt Nominal - 1000 Initial Lumens
 — 120 Volt Only, TRIAC Dimming

LED COLOR TEMPERATURE
 3K = ±3000K range
 4K = ±4000K range
 5K = ±5000K range

VOLTAGE
 EBU = Universal Voltage 120/277V Electronic Driver

PAINTED FINISHES
STANDARD FINISHES
 BK = Black
 BZ = Bronze
 EPX = Epoxy Coating (Anti-Corrosion)
 PNA = Painted Natural Aluminum
 SGR = Silver Gray
 WH = White
 RAL = RAL Color (Visit www.ralcolor.com for choices)

GRAVURA DESIGNER FINISHES
 Unique/colorful finishes such as Metal, Carbon Fiber, Stone, Wood, Camouflage, and Smoke/Flame patterns.
NOTE: Requires Solid Front (SF) Option
 *Gravura Designer / RAL Finishes Chart Listed on Page 2

WINDOW OPTIONS
 RW = Rectangular Windows
 SF = Solid Front
 *Custom Window Designs Available - Consult Factory

LED SENSOR OPTIONS
Note: Photocell/MSI Options Includes Back Box (BB) - Non-ADA
 9328 = Universal Voltage Photocell — 120/277V
 MSI1 = Motion Sensor Integral 1 (Single Circuit)
 — Steps: 0% - 100% - 0%
 MSI2 = Motion Sensor Integral 2 (Single Circuit)
 — Steps: xx% - 100% - xx%
 — xx% = LOW Level and/or STANDBY Dimmed Levels:
 Options: 50% / 30% / 20% / 10%

EMERGENCY BATTERY OPTIONS
Note: Integral Batteries Includes Back Box (BB) - Non-ADA
 EL4W = Integral LED 4 Watt

RAL Finishes



Pastel Orange (RAL 2003)



Pastel Green (RAL 6019)



Pastel Blue (RAL 5024)



Pastel Violet (RAL 4009)

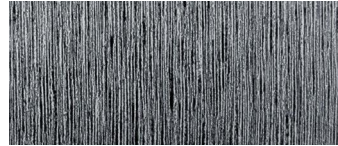
Metal Finishes



Grey Diamond Plate (GDP)



Diamond Plate (DPL)

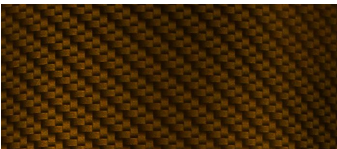


Stainless Steel (SST)



Handbrushed Aluminum (HBA)

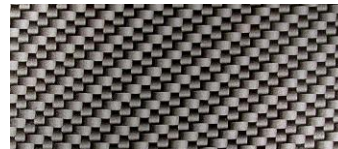
Carbon Fiber Finishes



Gold Carbon Fiber (GCF)



Black Carbon Fiber (BCF)



Silver Carbon Fiber (SCF)



Carbon Fiber-0 (CF0)



Carbon Fiber-1 (CF1)



Blue Carbon Fiber (BLC)



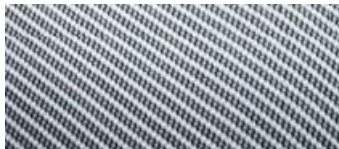
Silver Diagonal
Carbon Fiber (SDC)



Silver Square Carbon Fiber
(SSC)



Small Square Carbon Fiber
(SQF)



True Weave
Silver Carbon Fiber (TWS)

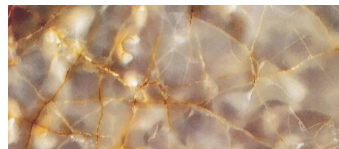


True Weave
Gold Carbon Fiber (TWG)

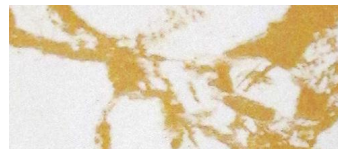
Stone Finishes



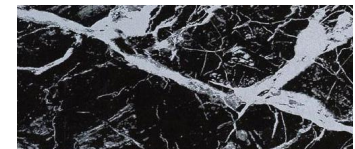
Gold Marble (GMB)



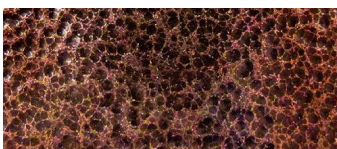
Muave Marble (MVM)



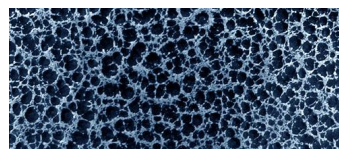
White Gold Vein (WGV)



White Vein (WVN)



Copper Hybrid (CHB)



Silver Hybrid (SHB)



Travertine (TVT)



Black Vein (BVN)