

Dresden

Architectural Full Cutoff Wall Mounted Luminaire

Indoor/Outdoor

We reserve the right to revise the design or components of any product without notice.

CATALOG #		TYPE
PROJECT/LOCATION		
APPROVED BY		

SPECIFICATIONS

- DRIVER** — Universal Voltage (120/277v), 50/60Hz Electronic Driver. <20% THD / PF <0.90. 0-10V low voltage dimming is standard, with dim level 100-10% (See Note 3 on Page 2). 347 and 480 Volt are optional.
- HOUSING** — Die-cast Aluminum Housing with Full Cutoff frame. Features Integral heatsink and driver compartment.
- LENS** — One-piece Molded Type IV Clear Polycarbonate Lens.
- FINISH** — Bronze Textured Powdercoat Finish over a Chromate Covered Coating.
- LIGHT ENGINE** — Energy efficient LED designed to replace HID lighting systems. Standard 80 CRI.
- MOUNTING** — Mounts directly over a 4" Recessed Outlet Box. Includes user-friendly wall mount bracket with built-in level. Recommended mounting height of 12 to 25 feet.
- OPERATING TEMP** — -40°C to +50°C Environment.
- COMPLIANCE** — Built to comply with U.S. and Canadian safety standards. CSA listed for Wet Locations. ANSI/UL 1598, 8750. IP66 Sealed LED Compartment.
- WARRANTY** — 5-Year Limited Warranty.



ORDERING INFO

Series	Size	Wattage	CCT	Voltage	Finish	Options
ORDERING GUIDE:						

SERIES

DD = Dresden

SIZE

S = Small (8¾"W x 11"L x 5¾"D)

L = Large (15"W x 12"L x 6"D)

WATTAGE

Note: Delivered Lumens based on 4000K

Dresden Small LED Wattages

LED17 = 17 Watt LED (2,140 Lumens)

LED25 = 25 Watt LED (3,151 Lumens)

LED37 = 37 Watt LED (4,459 Lumens)

LED81 = 81 Watt LED (9,166 Lumens)

Dresden Large LED Wattages

LED81 = 81 Watt LED (9,700 Lumens)

LED112 = 112 Watt LED (13,636 Lumens)

LED174 = 174 Watt LED (20,327 Lumens)

COLOR TEMPERATURE (CCT)

3K = ±3000K range (Size Small ONLY)

4K = ±4000K range

5K = ±5000K range

VOLTAGE

347 = 347 Volt (Size Large ONLY)

480 = 480 Volt (Size Large ONLY)

UNV = Universal Volt (120-277v) Driver

STANDARD FINISH

BZ = Bronze Finish (STANDARD)

PREMIUM UPCHARGE FINISH

CC = Custom Color (Consult Factory)

PHOTOCELL OPTIONS

9328 = Photocell Button – 120/277V

CONTROL OPTIONS

Sensor Control (Sensor Integral to Fixture)

OCC = Occupancy Sensing | Motion Sensor Integral

— Microwave / Single Feed / 120/277V Only

— Standby Dim Level Presets: ON/OFF (0%/100%)

BLD = Bi-Level Dimming | Motion Sensor Integral

— Microwave / Single Feed / 120/277V Only

— Standby Dim Level Presets:
10% / 20% / 30% (Standard) / 50%

MISC OPTIONS

FUS = Single Fuse

DFUS = Double Fuse

EMERGENCY BATTERY OPTIONS

EL4W = Integral LED 4 Watt (120/277V Only)

— Operating Temp Range: 0°F to 122°F

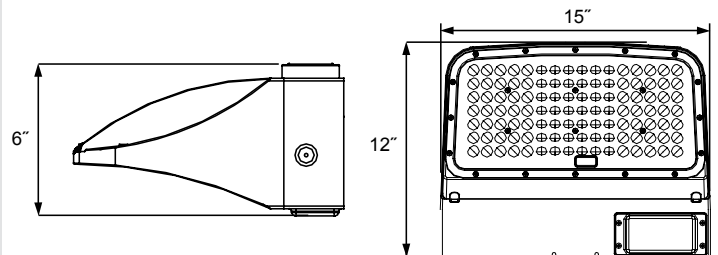
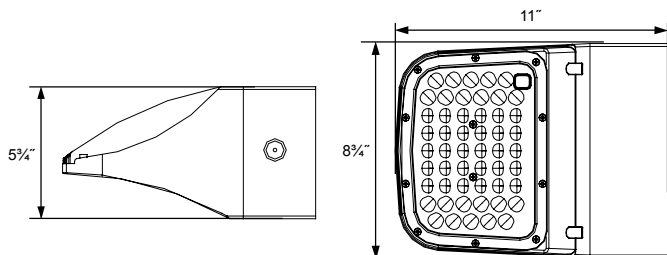
EL4W-CW = Integral LED 4 Watt - Cold Weather (120/277V Only)

— Operating Temp Range: -4°F to 122°F

DIMENSIONS

Dresden Small

Dresden Large



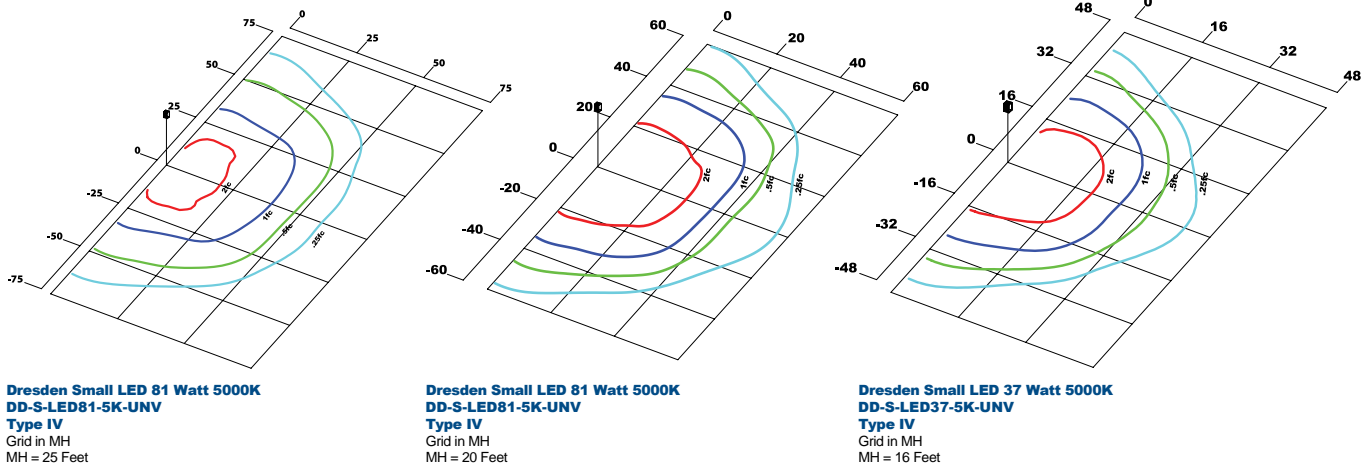
Dresden

Architectural Full Cutoff Wall Mounted Luminaire Indoor/Outdoor

We reserve the right to revise the design or components of any product without notice.

CATALOG #		TYPE
PROJECT/LOCATION		
APPROVED BY		

DRESDEN SMALL PHOTOMETRIC DATA



DRESDEN SMALL PHOTOMETRIC PERFORMANCE

Wattage	Drive Current (mA)	Input Watts	Optics	5000K / 80 CRI					4000K / 80 CRI					3000K / 80 CRI				
				Lumens	LPW	B	U	G	Lumens	LPW	B	U	G	Lumens	LPW	B	U	G
17 Watt	525	19	Type IV	2,326	120	1	0	1	2,140	112	1	0	1	-	-	-	-	-
25 Watt	525	28	Type IV	3,424	122	1	1	1	3,151	113	1	1	1	-	-	-	-	-
37 Watt	525	42	Type IV	4,604	110	1	1	1	4,459	106	1	1	1	4,259	101	1	1	1
81 Watt	525	84	Type IV	9,278	110	2	1	2	9,166	109	2	1	2	8,582	102	2	1	2

DRESDEN SMALL PROJECTED LUMEN MAINTENANCE

DATA SHOWN FOR 5000 CCT						
TM-21-11 ¹	Input Watts	Initial	25,000 Hrs ²	50,000 Hrs	100,000 Hrs	Calculated L70 @ 25°C
L70 Lumen Maintenance @ 25°C / 77°F	84	1.00	0.99	0.98	0.95	646,000
L70 Lumen Maintenance @ 50°C / 122°F	84	1.00	0.98	0.97	0.93	455,000
L70 Lumen Maintenance @ 40°C / 104°F	84	1.00	0.98	0.97	0.94	320,000

NOTES:

- 1 Projected per IESNA TM-21. Data references the extrapolated performance projections for the 525mA base model in a 25°C ambient, based on 10,000 hours of LED testing per IESNA LM-80-08.
- 2 Indicates suggested Light Loss Factor (LLF) to be used when comparing to Metal Halide (MH) systems.
- 3 Field wiring of 0-10V Dimming is NOT IMPLIED and may not be available. Luminaires are tested with Eclipse Lighting Inc. supplied controls and may not function properly with controls Supplied by Others.

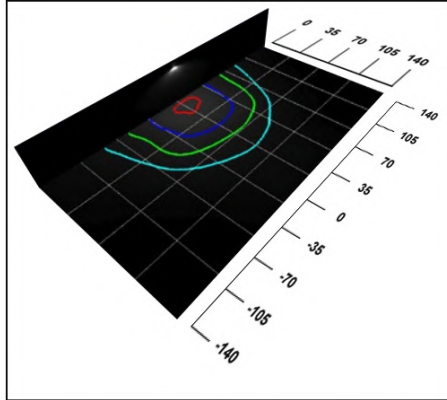
Dresden

Architectural Full Cutoff
Wall Mounted Luminaire
Indoor/Outdoor

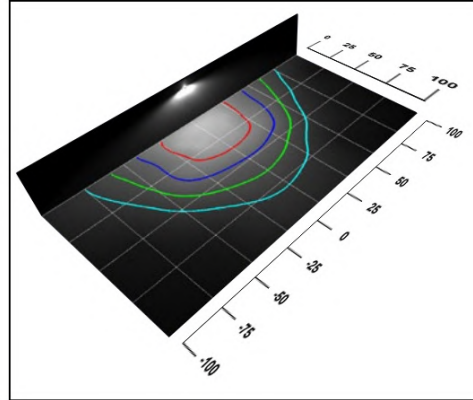
We reserve the right to revise the design or components of any product without notice.

CATALOG #		TYPE
PROJECT/LOCATION		
APPROVED BY		

DRESDEN LARGE PHOTOMETRIC DATA



Dresden Large LED 175 Watt 5000K
DD-L-LED174-5K-UNV
Type IV
Grid in MH
MH=35 Feet



Dresden Large LED 175 Watt 5000K
DD-L-LED174-5K-UNV
Type IV
Grid in MH
MH=25 Feet

DRESDEN LARGE PHOTOMETRIC PERFORMANCE

Led Wattage	Drive Current (mA)	Input Watts	Optics	5000K / 80 CRI					4000K / 80 CRI				
				Lumens	LPW	B	U	G	Lumens	LPW	B	U	G
81 Watt LED	525	93	Type IV	10,402	112	3	3	3	9,700	104	3	3	3
112 Watt LED	525	131	Type IV	14,689	112	3	3	3	13,697	105	3	3	3
174 Watt LED	525	188	Type IV	21,374	114	3	3	3	19,931	106	3	3	3

DRESDEN LARGE PROJECTED LUMEN MAINTENANCE

DATA SHOWN FOR 5000 CCT						
TM-21-11 ¹	Input Watts	Initial	25,000 Hrs ²	50,000 Hrs	100,000 Hrs	Calculated L70@ 25°C
L70 Lumen Maintenance @ 25°C / 77°F	188	1.00	0.99	0.98	0.95	646,000
L70 Lumen Maintenance @ 50°C / 122°F	188	1.00	0.98	0.97	0.93	455,000
L70 Lumen Maintenance @ 40°C / 104°F	188	1.00	0.98	0.97	0.94	320,000

NOTES:

- Projected per IESNA TM-21. Data references the extrapolated performance projections for the 525mA base model in a 25°C ambient, based on 10,000 hours of LED testing per IESNA LM-80-08.
- Indicates suggested Light Loss Factor (LLF) to be used when comparing to Metal Halide (MH) systems.